



## Hide-a-Spare Model Identifier

**MODEL 28210: 65" to 69" frame, Recessed mount for trailers without underbelly enclosure**

**MODEL 28215: 70" to 75" frame, Recessed mount for trailers without enclosed underbelly**

**MODEL 28216: 70" to 75" frame, Underslung mount for trailers with enclosed underbelly**

**MODEL 28217: 70" to 75" frame, I-Beam Recessed mount for trailers without underbelly enclosure**

**MODEL 28218: 70" to 75" frame, I-Beam Underslung mount for trailers with enclosed underbelly**

*Measurements are from side to side of each exterior edge of the vertical frame.*

The following descriptions and tips will help identify which Hide-a-Spare will work for the intended trailer:

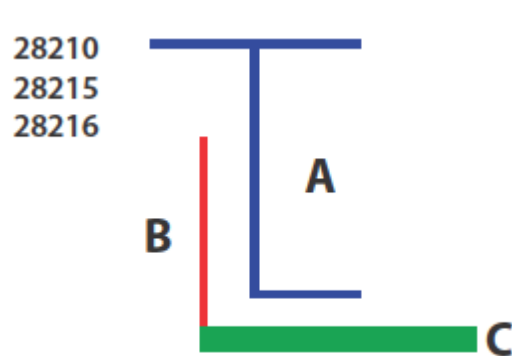
### Terminology:

- 1) **Enclosed Underbelly** – when a trailer has a sheet of plastic, fiberglass, aluminum or other material that is installed horizontally beneath the trailer frame. This sheet is attached from front to back and from Driver's to Passenger's side frame rail. It protects the bottom of the trailer from road debris and the elements. A Hide-a-Spare that is 'underslung' will work on an Enclosed Underbelly trailer.
- 2) **Underslung** – this details the model of Hide-a-Spare that is used with Enclosed Underbelly trailers. It allows the spare tire to be positioned below the frame as opposed to recess into the cavity between the frame rails. Underslung models should be mounted as close to the axles as possible as it decreases ground clearance.
- 3) **Recessed Underbelly** – this is a trailer that has no material concealing the bottom of the trailer frame. When looking underneath the trailer, you will be able to see waste tanks, electrical and plumbing lines, wiring, and the bottom of your trailer floor. You will also see the exposed frame rails and crossmembers (steel supports running from one frame rail across to the other frame rail). Using this model will allow you to recess the spare tire up into the frame limiting ground clearance loss.
- 4) **'I'-Beam frame** – each frame rail will look like a capital 'I' from the end of the trailer. Each side of the frame (passenger and driver) will have a horizontal lip on the lower, exterior edge. The Hide-a-Spare fitting the 'I'-beam frame will have brackets that are designed to avoid this lip.
- 5) **All other frames** – frames that are not 'I'-beams will have a flat, smooth vertical surface. These are called Box, Channel, 'C'-frame, or 'Z'-frame. They will not have the lip the 'I'-beam and will have a flat, vertical bracket can be used on the Hide-a-Spare.
- 6) **Pivot bracket** – the Hide-a-Spare bracket that is mounted permanently to the Driver's side and acts as a hinge when the Hide-a-Spare is lowered to remove the tire.
- 7) **Storage bracket** – this mounts permanently to the Passenger's side and allows the Hide-a-Spare to secure to the trailer using a removable Locking Knob and Cotter Pin.

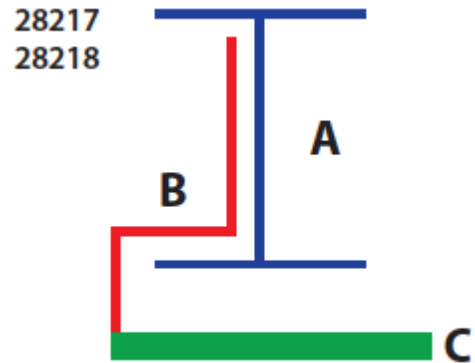
### Pivot Bracket diagrams:

**BLUE = trailer frame**   **RED = Pivot Bracket**   **GREEN = Hide-a-Spare**

A = interior of trailer frame   B = Pivot bracket   C = Telescoping Arms



Driver's side profile of NON 'I'-Beam frame

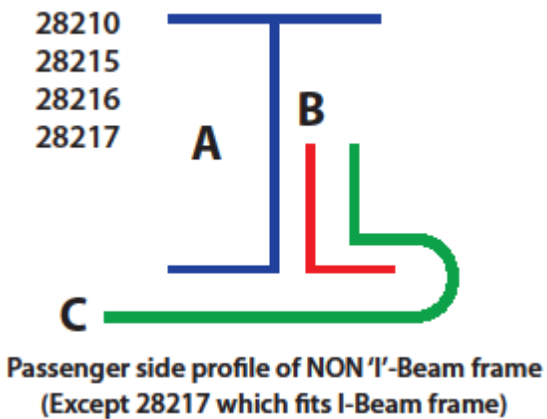


Driver's side profile of 'I'-Beam frame

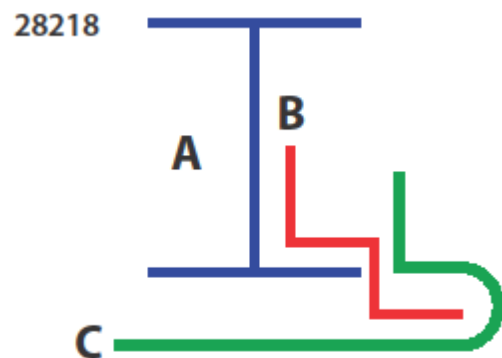
### Storage Bracket diagrams:

**BLUE = trailer frame**   **RED = Storage Bracket**   **GREEN = Hide-a-Spare**

A = interior of trailer frame   B = Storage bracket   C = Telescoping Arms

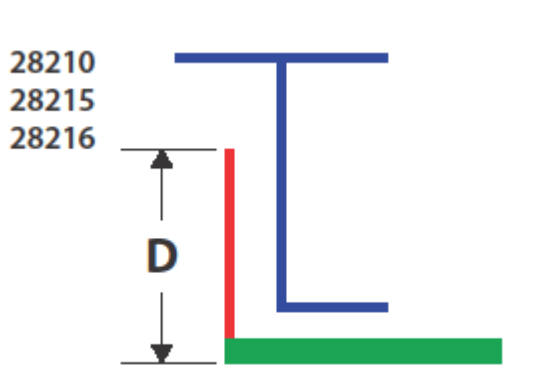


Passenger side profile of NON 'I'-Beam frame  
(Except 28217 which fits I-Beam frame)

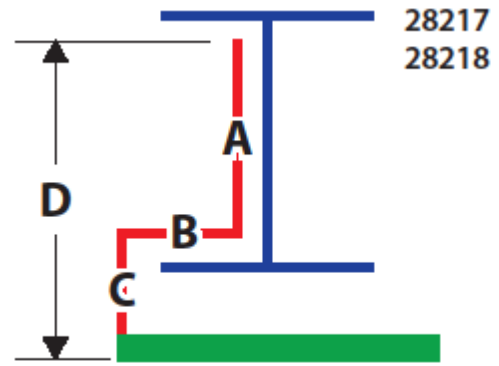


Passenger side profile of 'I'-Beam frame

### Pivot Bracket Measurements:



Driver's side profile of NON 'I'-Beam frame

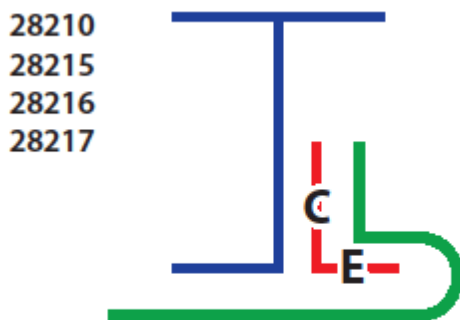


Driver's side profile of 'I'-Beam frame

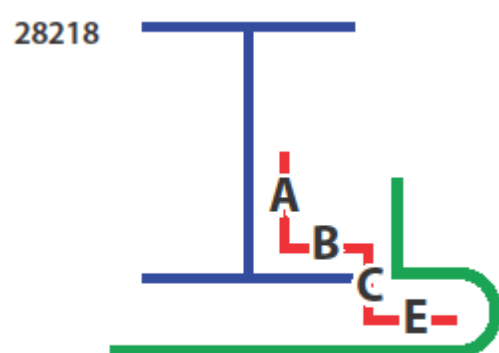
#### Pivot Bracket Measurements (inches)

Model No.	A	B	C	D
28210	x	x	x	6.5
28215	x	x	x	6.5
28216	x	x	x	12.75
28217	2.5	2.375	4.25	6.75
28218	2.5	2.375	11	13.5

### Storage Bracket Measurements:



Passenger side profile of NON 'I'-Beam frame  
(Except 28217 which fits I-Beam frame)



Passenger side profile of 'I'-Beam frame

#### Storage Bracket Measurements (inches)

Model No.	A	B	C	D	E
28210	x	x	4	x	3
28215	x	x	4	x	3
28216	x	x	9	x	3
28217	x	x	4	x	3
28218	2.5	2.375	6.75	9.25	3