



DEXTER CHASSIS GROUP CENTER DRIVE SLIDE



- Disconnect all electrical power sources before working on slide unit.
- Keep all clothing, hair, jewelry, etc. clear of the cross shaft
- Keep body, clothing, hair, etc. out of slide mechanism when it is in motion.

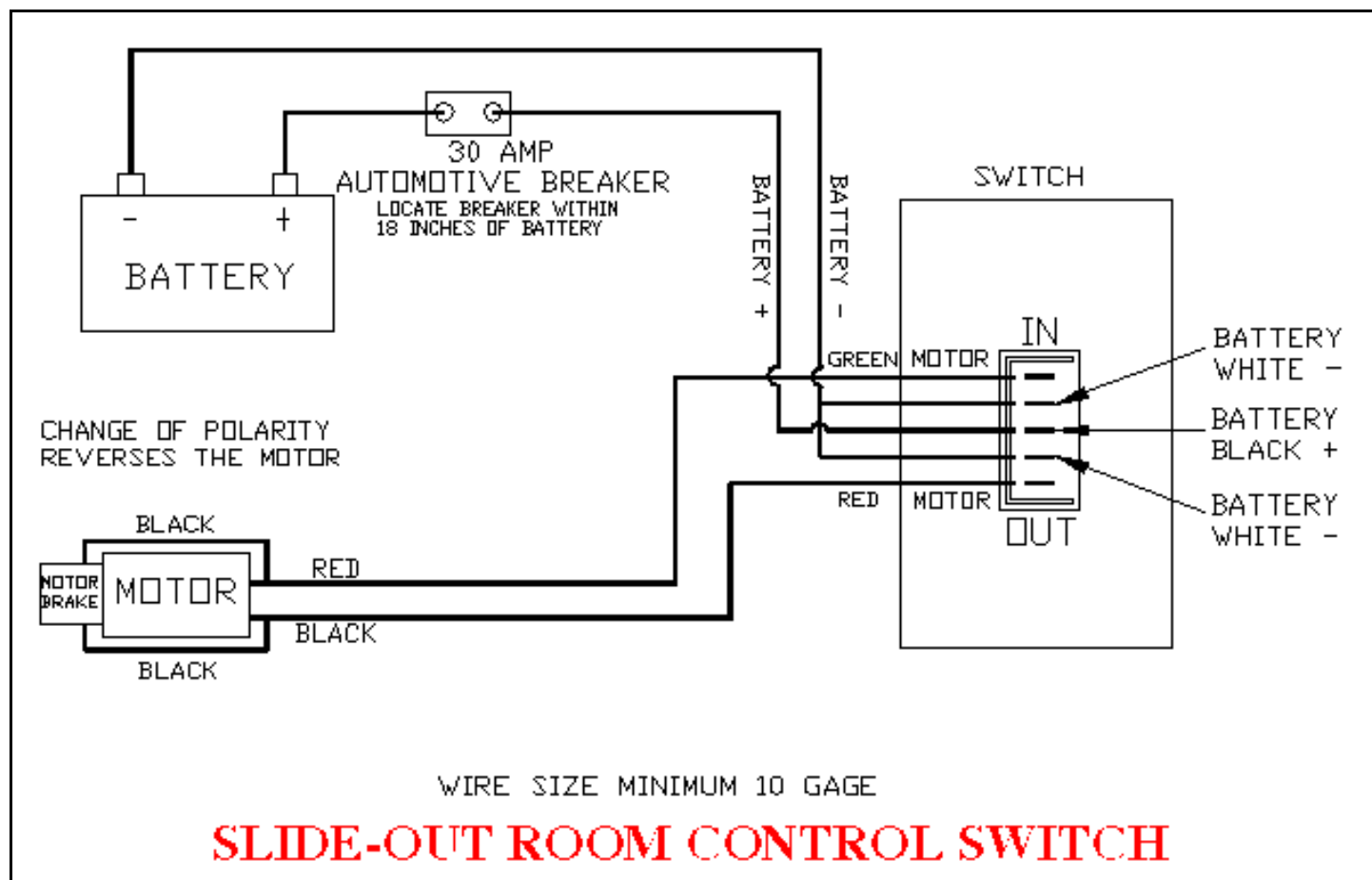
Troubleshooting DCG Center Drive Slide

- Adjusting room in the up and down position (View A):
 - Loosen both carriage bolts on each bracket located at the end of each guide tube
 - Turn vertical adjustment bolt up or down to locate room height.
 - Once room is located tighten carriage bolts as far up in the slot as possible.
- Adjusting room from side to side (View A):
 - Loosen bolts on the bottom side of brackets located at the end of each guide tube
 - After bolts are loose, slide the room to which side it needs to go.
 - Tighten bolts.

- Adjusting room so it seals in the **OUT** position (View B1):
 - Locate the out stop bracket (located on the outer slide channel, which will be completely under the unit)
 - There will be a bolt with a jam nut threaded into the nut welded onto the bracket
 - Loosen the jam nut and adjust the bolt needed direction to get the room to seal (thread the bolt further in to stop the room short or back the bolt out of the bracket to allow the room to travel further out).
 - Tighten jam nut against weld nut.
- Adjusting the room so it seals in the **IN** position (View B2):
 - Locate the in stop bracket (located on the inner slide tube near the room mounting bracket).
 - There will be a bolt as well as a jam nut threaded into the stop bracket.
 - Loosen the stop nut and adjust the bolt the needed direction to get the room to seal (thread the bolt further into the bracket to stop the room sooner on the in half cycle or back the bolt out of the bracket to allow the room to travel further in).
- To replace motor (View C)
 - To remove motor
(**HINT:** Release tension on slide by having the room in an unsealed position)
 - Disconnect wires to motor
 - Disconnect cross-shafts from motor
 - Remove (4) mounting bolts from motor and bracket
 - To install new motor assemble in reverse order
- Manually advancing a slide room
 - Disconnect motor brake wires from power wires
 - Connect a 9-13.4 Volt DC power supply to the motor brake wires
 - Locate the manual advance crank nut on the backside of the motor
 - Crank nut on motor with a 5/8" socket
 - With DC power supply connected to the motor brake crank the nut on the motor until the room is sealed.
- Once the room is in a closed position remove the DC power supply and go to the closest dealer.

Troubleshooting Switch

If room moves opposite from what it says on the switch plate – reverse the motor wires on back of the switch (refer to wiring diagram). (Wire size must be a minimum thickness of 10 Gage)



TIGHTEN BOLTS AS HIGH AS POSSIBLE

SIDE TO SIDE

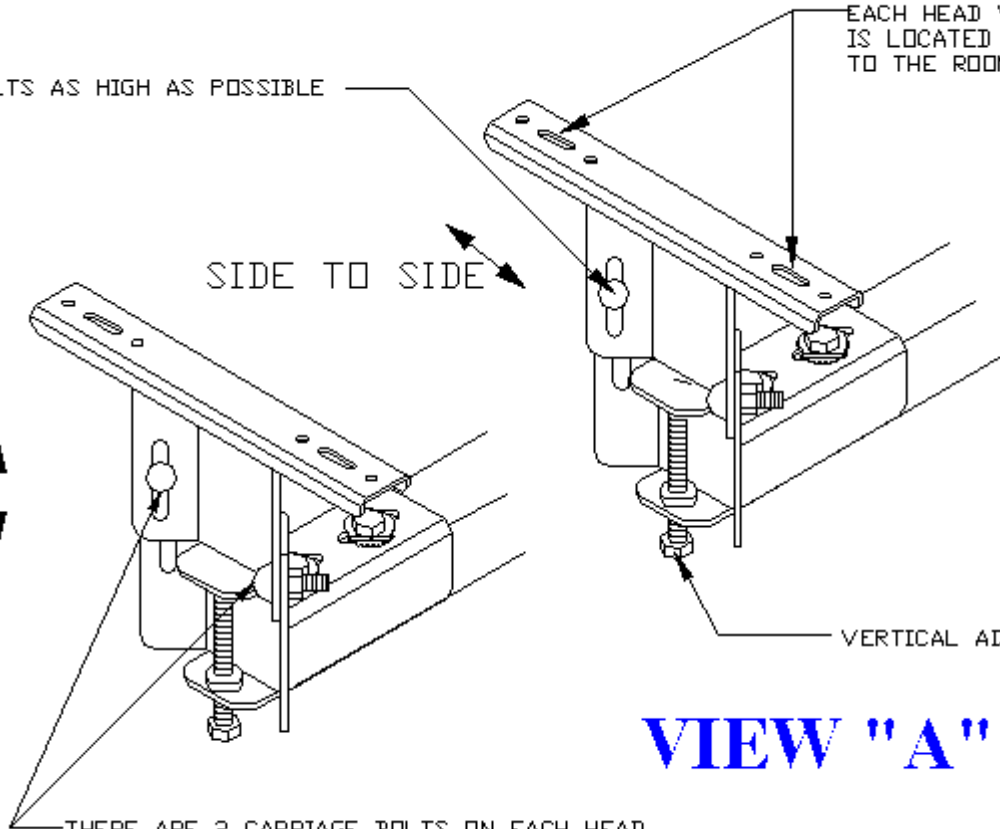
UP OR
DOWN

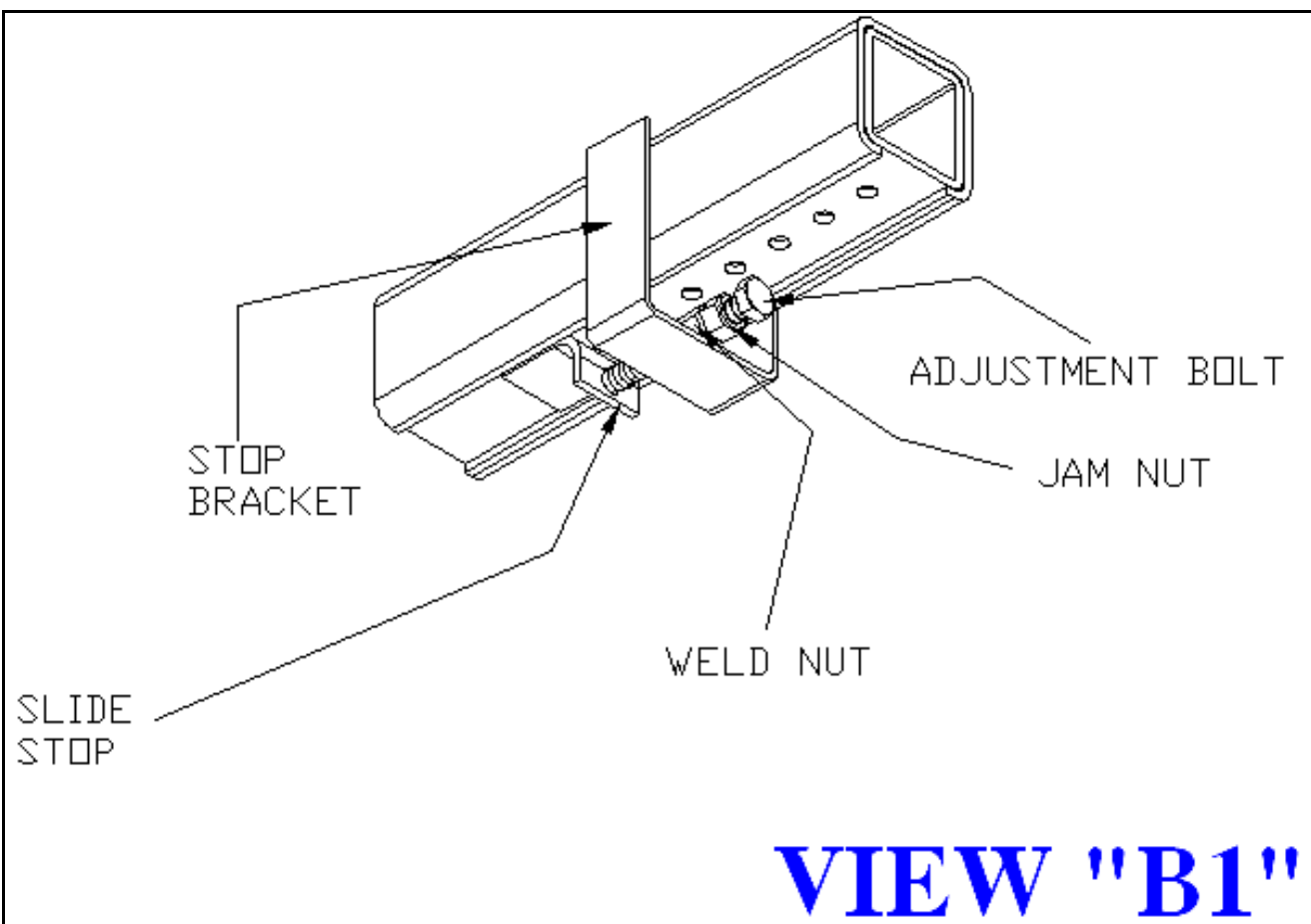
THERE ARE 2 SLOTS ON
EACH HEAD WHERE A BOLT
IS LOCATED TO FASTEN
TO THE ROOM

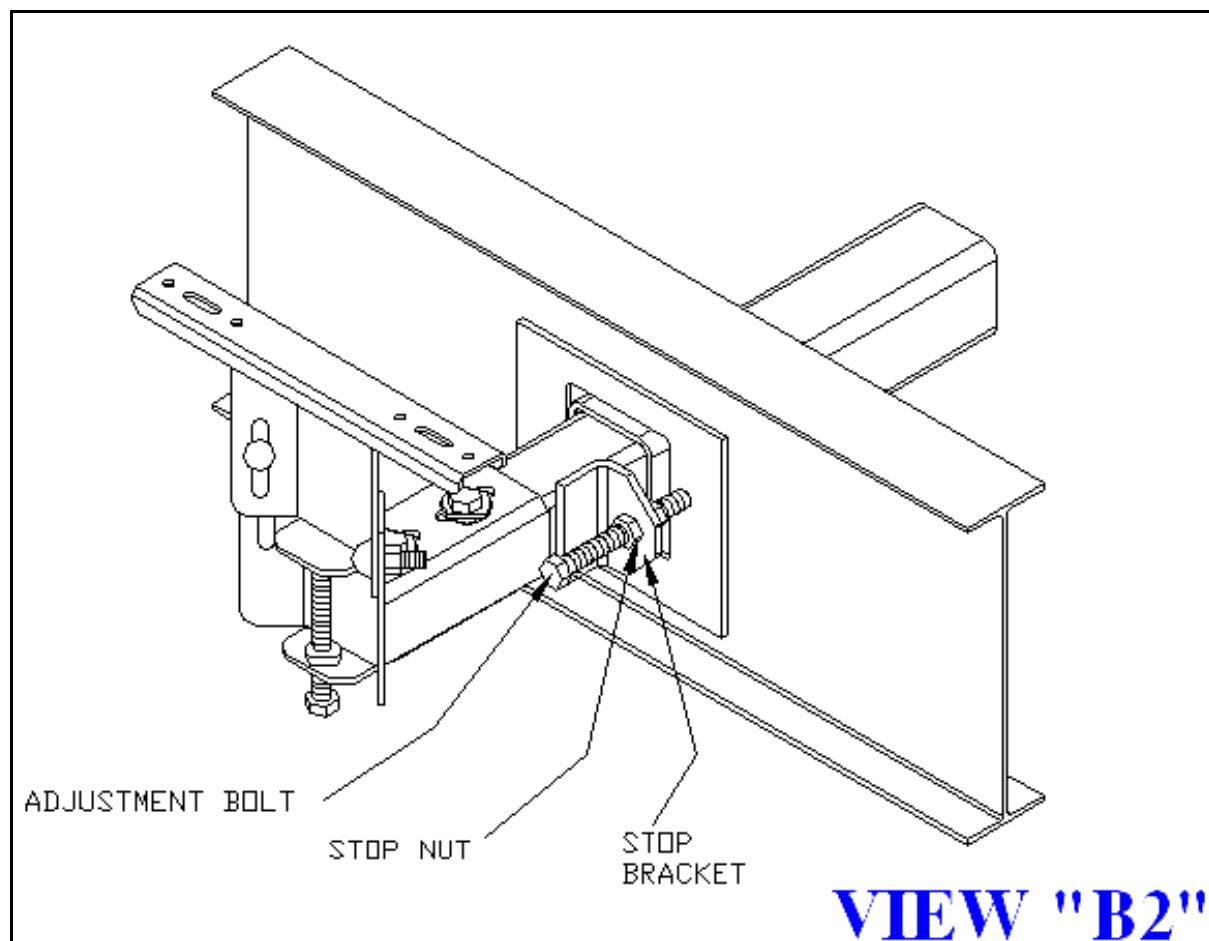
VERTICAL ADJUSTMENT BOLT

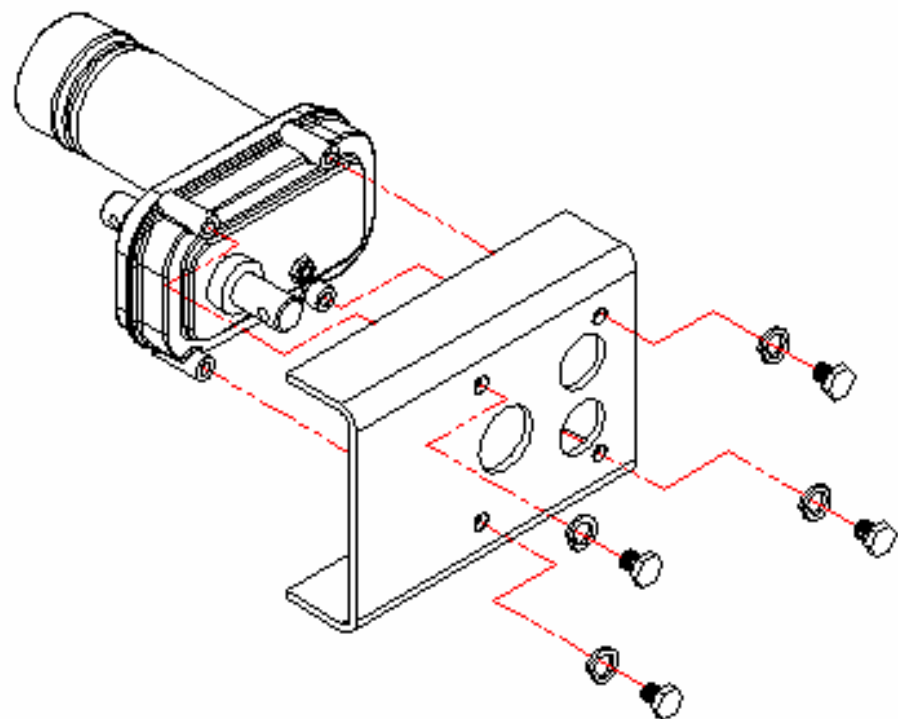
THERE ARE 2 CARRIAGE BOLTS ON EACH HEAD

VIEW "A"

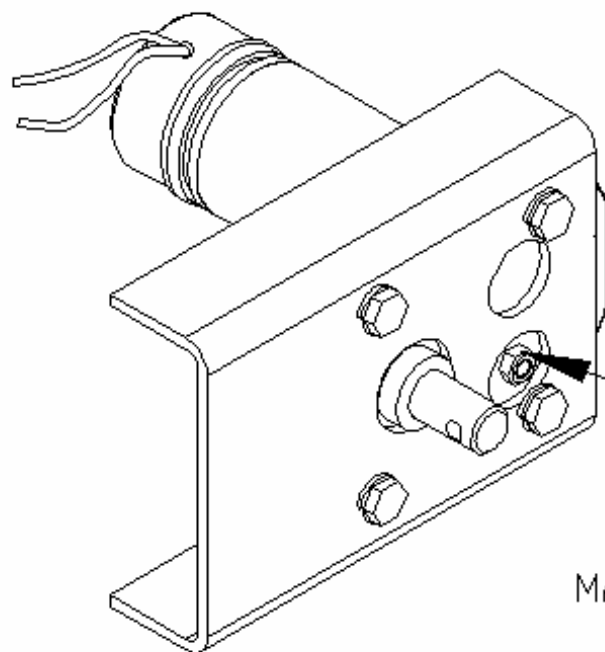








VIEW "C"



MANUAL OVERRIDE
CRANK NUT

VIEW "D"

An electronic version of this manual and other helpful information can be found at
www.dexterchassisgroup.com

Dexter Chassis Group assumes no responsibility for damages or injuries caused by failure to comply with the instructions listed in this manual.

Dexter Chassis Group © 2007