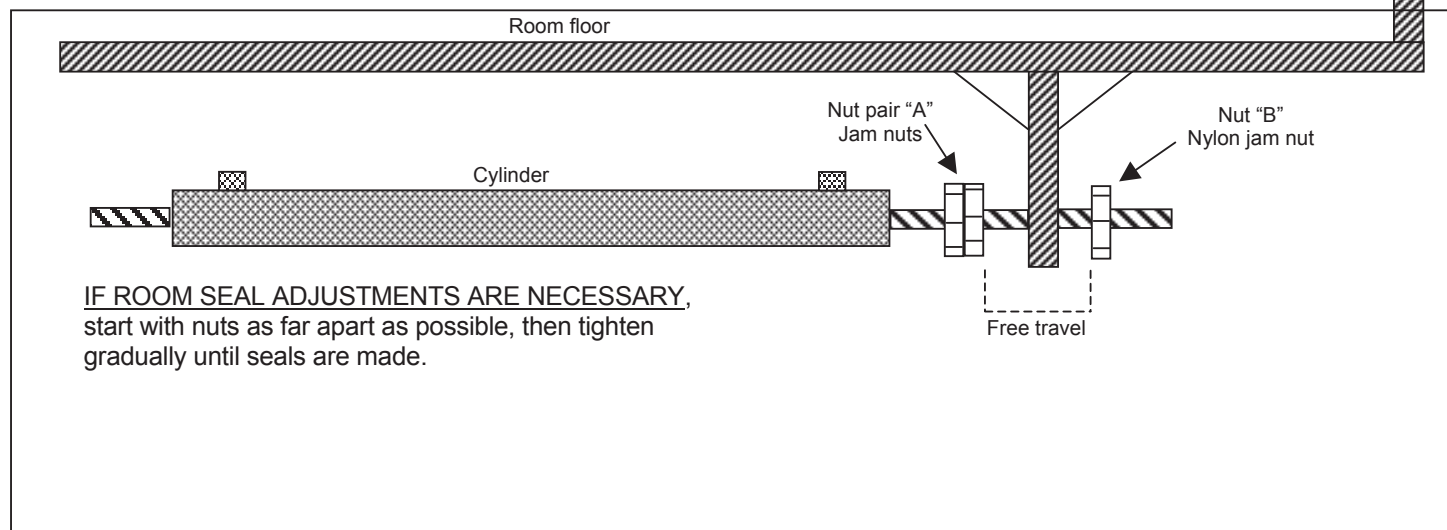


ROOM CYLINDER ADJUSTMENT

In/out seal adjustment- **Cylinders that DO NOT HAVE STOP TUBES**



Jamb nuts are used to adjust tightness of room seals. Nut pair "A" in the OUT direction; nut "B" in the IN direction.

The "free travel" space accounts for the difference between the cylinder stroke and the room travel.

In/out seal adjustment- **Cylinders that DO HAVE STOP TUBES**

