



WingIt Innovations, LLC

THE WORLD'S STRONGEST
FASTENERS & FIXTURES™

2011 PRODUCT CATALOG

The Solutions Company

- New Products
 - Platinum Decorative Grab Bars
 - Infinity Towel Vines
- WingIts curved Shower Rods
 - Oval
 - Crescent
- MASTER LINE
 - MASTER Racks
 - MASTER Baskets
- WingIts Fastening System
- Premium Grab Bar Collection
- The Oval Suite
- Accessories



TOLL FREE: 877-894-6448
www.wingits.com



WingIt Innovations, LLC

THE WORLD'S STRONGEST
FASTENERS & FIXTURES™

For more than a decade, WingIt has been providing patented products to the hospitality, health care and government sectors around the world. Today, WingIt features the largest selection of waterproof grab bars, curved shower rods and accessories anchored with The World's Strongest Fastener, WingIt. WingIt products install in just minutes and always meet the local and state codes when properly installed. Our fastening systems are used today by some of the most well-known hospitality companies in the world such as Marriott, Hilton and Walt Disney Resorts. We look forward to having you as our customer and know you will always be 100% satisfied with our products. In fact, we guarantee it!

Please visit www.wingits.com
for product specifications, distributors and how-to installation videos of
The World's Strongest Fastener™

PLATINUM

PREMIUM DECORATIVE GRAB BARS



WPG B5 XX ZZ BAN



WPGB5 XX ZZ TAP



MPGB5 XX ZZ HEX



MPGB5 XX ZZ ROP



WPGB5 XX ZZ BEV



WPG B5 XX ZZ TRI

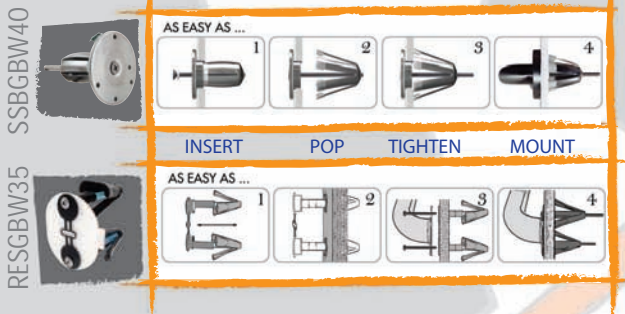


HALO

WPGB5 XX ZZ HAL

Installation Solution - Winglts

GUARANTEED WATERPROOF IN 8 MINUTES !



XX (Finish) = PS (Polished); SN (Satin)
ZZ (Length) = 12", 16", 18", 24", 30", 32", 36", 42", 48"



www.wingits.com • 877.894.6448

WINGITS' PLATINUM GRAB BARS

PREMIUM DECORATIVE GRAB BARS



BANDS

ROPE

BEVEL



HEX

TRI-STEP

TAPER

- The NEW Standard in Safety Bars - JEWELRY GRADE
- Solid Cast 18/8 Stainless Steel
- Exceeds ALL Building Codes & ADA Guidelines
- Compatible with WingIt's Grab Bar Fastening Systems
- THREADED Cast Stainless Steel Flanges and Covers
- Slotted Flanges allow for SPEED Installation w/ WingIt's Grab Bar Fastening Systems
- Designer Flanges available in 7 Bold Looks
- Available in Satin or Polished and 9 different lengths

Install
in minutes w/
WINGITS'
Grab Bar fastening
Systems

Mfg # Size

Bands

| | |
|--------------|-------------|
| WPGB5XX12BAN | 1.25" X 12" |
| WPGB5XX16BAN | 1.25" X 16" |
| WPGB5XX18BAN | 1.25" X 18" |
| WPGB5XX24BAN | 1.25" X 24" |
| WPGB5XX30BAN | 1.25" X 30" |
| WPGB5XX32BAN | 1.25" X 32" |
| WPGB5XX36BAN | 1.25" X 36" |
| WPGB5XX42BAN | 1.25" X 42" |
| WPGB5XX48BAN | 1.25" X 48" |

Mfg # Size

Bevel

| | |
|--------------|-------------|
| WPGB5XX12BEV | 1.25" X 12" |
| WPGB5XX16BEV | 1.25" X 16" |
| WPGB5XX18BEV | 1.25" X 18" |
| WPGB5XX24BEV | 1.25" X 24" |
| WPGB5XX30BEV | 1.25" X 30" |
| WPGB5XX32BEV | 1.25" X 32" |
| WPGB5XX36BEV | 1.25" X 36" |
| WPGB5XX42BEV | 1.25" X 42" |
| WPGB5XX48BEV | 1.25" X 48" |

Mfg # Size

Halo

| | |
|--------------|-------------|
| WPGB5XX12HAL | 1.25" X 12" |
| WPGB5XX16HAL | 1.25" X 16" |
| WPGB5XX18HAL | 1.25" X 18" |
| WPGB5XX24HAL | 1.25" X 24" |
| WPGB5XX30HAL | 1.25" X 30" |
| WPGB5XX32HAL | 1.25" X 32" |
| WPGB5XX36HAL | 1.25" X 36" |
| WPGB5XX42HAL | 1.25" X 42" |
| WPGB5XX48HAL | 1.25" X 48" |

Mfg # Size

Hex

| | |
|--------------|-------------|
| WPGB5XX12HEX | 1.25" X 12" |
| WPGB5XX16HEX | 1.25" X 16" |
| WPGB5XX18HEX | 1.25" X 18" |
| WPGB5XX24HEX | 1.25" X 24" |
| WPGB5XX30HEX | 1.25" X 30" |
| WPGB5XX32HEX | 1.25" X 32" |
| WPGB5XX36HEX | 1.25" X 36" |
| WPGB5XX42HEX | 1.25" X 42" |
| WPGB5XX48HEX | 1.25" X 48" |

Mfg # Size

Rope

| | |
|--------------|-------------|
| WPGB5XX12ROP | 1.25" X 12" |
| WPGB5XX16ROP | 1.25" X 16" |
| WPGB5XX18ROP | 1.25" X 18" |
| WPGB5XX24ROP | 1.25" X 24" |
| WPGB5XX30ROP | 1.25" X 30" |
| WPGB5XX32ROP | 1.25" X 32" |
| WPGB5XX36ROP | 1.25" X 36" |
| WPGB5XX42ROP | 1.25" X 42" |
| WPGB5XX48ROP | 1.25" X 48" |

Mfg # Size

Taper

| | |
|--------------|-------------|
| WPGB5XX12TAP | 1.25" X 12" |
| WPGB5XX16TAP | 1.25" X 16" |
| WPGB5XX18TAP | 1.25" X 18" |
| WPGB5XX24TAP | 1.25" X 24" |
| WPGB5XX30TAP | 1.25" X 30" |
| WPGB5XX32TAP | 1.25" X 32" |
| WPGB5XX36TAP | 1.25" X 36" |
| WPGB5XX42TAP | 1.25" X 42" |
| WPGB5XX48TAP | 1.25" X 48" |

Mfg # Size

Tri-Step

| | |
|--------------|-------------|
| WPGB5XX12TRI | 1.25" X 12" |
| WPGB5XX16TRI | 1.25" X 16" |
| WPGB5XX18TRI | 1.25" X 18" |
| WPGB5XX24TRI | 1.25" X 24" |
| WPGB5XX30TRI | 1.25" X 30" |
| WPGB5XX32TRI | 1.25" X 32" |
| WPGB5XX36TRI | 1.25" X 36" |
| WPGB5XX42TRI | 1.25" X 42" |
| WPGB5XX48TRI | 1.25" X 48" |

XX (Finish) = PS (Polished), SN (Satin)

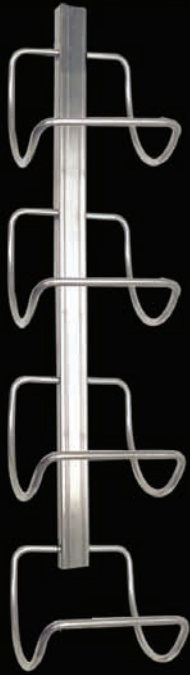
Call us TODAY toll-free at 877.894.6448 or email us at sales@wingits.com or visit us at www.wingits.com



NEW!

INFINITY TOWEL VINES™ COLLECTION

SCOOP



3-Tier or 4-Tier Structural
Stainless Steel

6" Scoops hold ROLLED Bath Towels

Designed to be installed right
outside the shower

Contemporary Design with
minimal appearance

Available in Polished or Satin Finishes

Includes 2 FREE MASTER Anchors
- World's Strongest Fastener™
for Guaranteed Installation

SPIRE



4-Tier Structural Stainless Steel

3" Spire for FOLDED Bath Towels

4" Spire for ROLLED Bath Towels

Designed to be installed right
outside the shower

Bath Towels appear to float!

Available in Polished or Satin Finishes

Includes 2 FREE MASTER Anchors
- World's Strongest Fastener™
for Guaranteed Installation

● ● ● INFINITY TOWEL VINES™ COLLECTION



- Structural Stainless Steel - Engineered Durability
- Contemporary Design with Minimal appearance
- 6" SCOOP for **ROLLED Towels**
- 3" SPIRE for **FOLDED Towels**, 4" SPIRE for **ROLLED Towels**

Includes :
MASTER
Anchors

| Mfg # | Size | Finish |
|--------------|-------------|--------|
| SCOOP | | |
| TV3TFS15BS | 3-Tier | Bright |
| TV3TFS15BN | 3-Tier | Satin |
| TV4TFS21BS | 4-Tier | Bright |
| TV4TFS21BN | 4-Tier | Satin |
| SPIRE | | |
| TV4SP63BS | 4-Tier (3") | Bright |
| TV4SP63BN | 4-Tier (3") | Satin |
| TV4SP64BS | 4-Tier (4") | Bright |
| TV4SP64BN | 4-Tier (4") | Satin |



MASTER Anchor™

- WORLD'S STRONGEST FASTENER™ - NEVER Loosens!
- Installs in ALL Hollow Walls - in just minutes
- Fire Retardant, Structural Plastic & Stainless Steel Construction
- Rated up to 300 lbs. in ½" drywall

Easy Installation:
APACHE200
3/4" DRILL BIT

Mfg #
MAW35
MAW35B100

AS EASY AS ...



PLATINUM - PREMIUM DECORATIVE GRAB BARS



We are the World's Leader in **Grab Bars**
Curved Shower Rods
AND Structural Bath Accessories

WingIts

... a solution to all your needs



World's Strongest Fasteners



Call us TODAY toll-free at 877.894.6448 or email us at sales@wingits.com or visit us at www.wingits.com



WINGITS CURVED SHOWER RODS

THE WORLD'S STRONGEST SHOWER RODS™

SPECIFIED BY THE MAJOR HOTELS THROUGHOUT NORTH AMERICA

INNOVATION and BEAUTY have culminated in our Shower Rods

SUPERIOR OVAL™ (Oval Tubing) curved SHOWER ROD



- Structure & Beauty - Best of Both Worlds
- World's Strongest *curved* Shower Rod
- Only curved Rod that cannot ROTATE in its fittings
- Easiest & Fastest curved Shower Rod INSTALLATION!
- Gives up to 25% more room in the tub
- Works seamlessly with All Shower Hooks or HOOKLESS curtains
- Available in Standard Bow or our EXCLUSIVE **Reduced** Bow
- Wingits' Installation Accessories available

| Mfg # | Size | Finish |
|----------|-----------------|--------|
| WOCBS5 | 5' Standard Bow | Bright |
| WOCNS5 | 5' Standard Bow | Satin |
| WOCBS5-6 | 5' 6" Bow | Bright |
| WOCNS5-6 | 5' 6" Bow | Satin |

CRESCENT® (Round Tubing) curved SHOWER ROD



- Available in Standard Bow or our EXCLUSIVE **Reduced** Bow
- Gives up to 25% more room in the tub
- Available in Satin and Bright Finishes
- Custom Sizes Available
- Wingits' Installation Accessories available

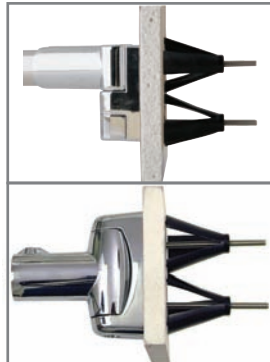
| Mfg # | Size | Finish |
|----------|-----------------|--------|
| WCRBS5 | 5' Standard Bow | Bright |
| WCRBS5-6 | 5' 6" Bow | Bright |
| WCRSS5 | 5' Standard Bow | Satin |
| WCRSS5-6 | 5' 6" Bow | Satin |

Use Wingits' Bath Accessory Fastening System
for a guaranteed installation of all Wingits' *curved*
Shower Rods into hollow walls.



curved SHOWER ROD SOLUTIONS

BATH ACCESSORY WINGIT



- PERMANENT Installation of ALL WingIts' Shower Rods
- NEVER Loosens!
- NEVER Sags!
- Guaranteed Installation
- Works with all OVAL Bath Accessories

Mfg #

BAW30

APACHE200™ DRILL BITS



*Makes Installing
WingIts
a breeze!*

- Industrial Carbide Drill Bit - Rated @ 200 holes through Ceramic Wall Tile
- Guaranteed to NEVER WALK - Fits standard and cordless drills
- Designed for Ceramic, Marble and Plaster
- Available in 3/4" or 1-1/4" diameter

Mfg #

WA200GT34 (3/4"),
WA200GT54 (1-1/4")

MATCHING COVER PLATES

- Matching Stainless Steel (Bright or Satin)
- Covers existing holes while properly locating the curved rod
- Matches WingIts' *curved* Shower Rods (Specify Standard or OVAL)

Mfg #

OCP-BS
OCP-SN
BCSR-CHM
BCSR-SNM

Finish

OVAL Bright
OVAL Satin
Crescent Bright
Crescent Satin



MASTER Rack™

PART #- WMRBS18, WMRBS24, WMRSN18, WMRSN24

World's Strongest Towel Shelf and Fastening System!

- Structural Stainless Steel Construction
- FREE - MASTER Anchors for Easy Installation - NO BLOCKING REQUIRED
- Engineered for Durability
- Available in Bright and Satin Finishes

Manufactured from the finest materials.

Installs in Minutes - Lasts a Lifetime.

4 FREE MASTER Anchors



- WORLD'S STRONGEST FASTENER
- NEVER Loosens!
- Installs in ALL Hollow Walls - in just minutes
- Fire Retardant, Structural Plastic & Stainless Steel Construction
- Rated up to 300 lbs. in drywall

WORLD'S STRONGEST FASTENERS & FIXTURES

OVER TWO MILLION

2,000,826

INSTALLED.

AND STILL COUNTING...

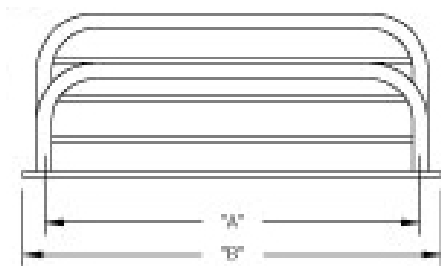
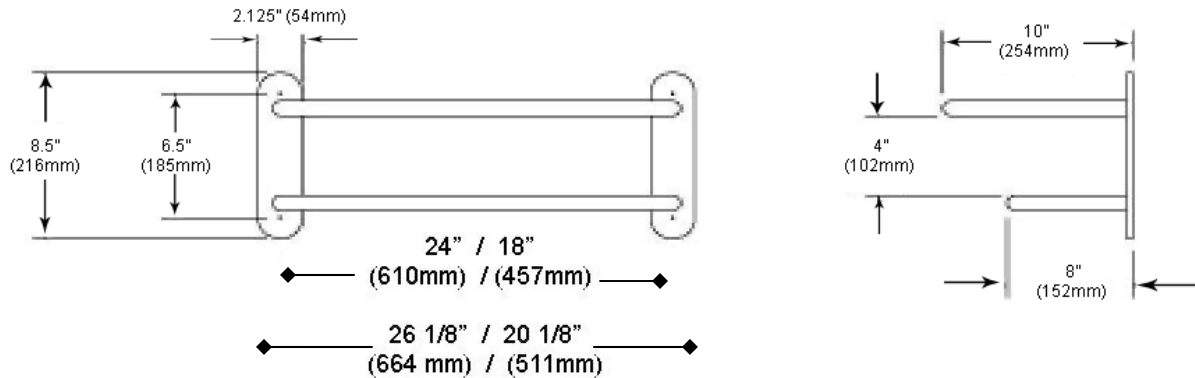


Call us at 877.894.6448

Email us at sales@wingits.com

www.wingits.com

MASTER Rack details:



| | | |
|---------|---------------------|---------------------|
| LENGTH | 18" (457 mm) | 24 (610 mm) |
| DIM "A" | 18" (457 mm) | 24" (610mm) |
| DIM "B" | 20 1/8" (511 mm) | 26 1/8" (664 mm) |

TOWEL RACK MATERIALS

WALL FLANGE— 20 Gauge (1mm) stamped Stainless Steel plate.

TUBING— 18 Gauge (1.2mm); Stainless Steel Tubing - 0.75" (19mm) diameter.

CROSS TUBING— 20 Gauge (1mm); Stainless Steel Tubing - 0.375" (9mm) dia.

STRUCTURAL ATTACHMENTS— Threaded Structural Inserts 1" (25mm) long are installed in Tube Ends to receive 1/4-20 x 1.25" Stainless Steel Screw. Concealed Filler Plates are Structurally Engineered zinc cast 1/4" x 1 1/8" x 7 1/2" (6mmX28mmX190mm).

FINISH— Stainless Steel is polished to a CHROME *MIRROR* appearance.

MASTER ANCHOR MATERIALS

SCREWS— 8-32 X 3.5" Stainless Steel Machine Screw.

FACEPLATES & WINGS— Fire Retardant Structurally Engineered Plastics.

TAPE— 3M Double Sided Watertight Tape.

SPECIFICATION

INSTALL THE **MASTER RACK** WITH THE SUPPLIED **MASTER ANCHORS** by **WINGITS WMRBS24 (24")** or **WMRBS18 (18")**

Installation of the MASTER Rack with the MASTER Anchor is GUARANTEED!

Toll free: 877.894.6448

sales@wingits.com

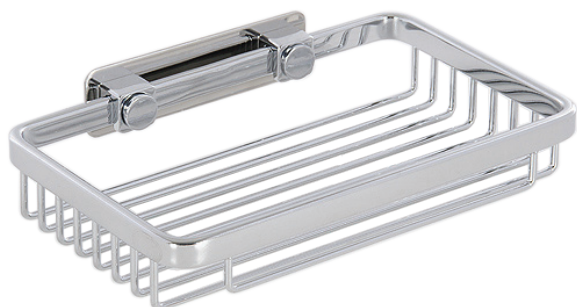
• www.wingits.com





MASTER Basket™

PART# - WCBPS6, WCBSN6, WRBPS8, WRBSN8



The World's Strongest Baskets and Fastening System!

- Structural Stainless Steel Construction
- FREE - MASTER Anchors for Easy Installation - NO BLOCKING REQUIRED
- Engineered for Durability
- Concealed Screws, Decorative Design
- Available in Bright and Satin Finishes

Manufactured from the finest materials

Installs in minutes - Lasts a Lifetime

2 FREE MASTER Anchors



- **WORLD'S STRONGEST FASTENER™**
- NEVER Loosens!
- Installs in ALL Hollow Walls - in just minutes
- Fire Retardant, Structural Plastic & Stainless Steel Construction
- Rated up to 300 lbs. drywall.

WORLD'S STRONGEST FASTENERS & FIXTURES™

OVER TWO MILLION

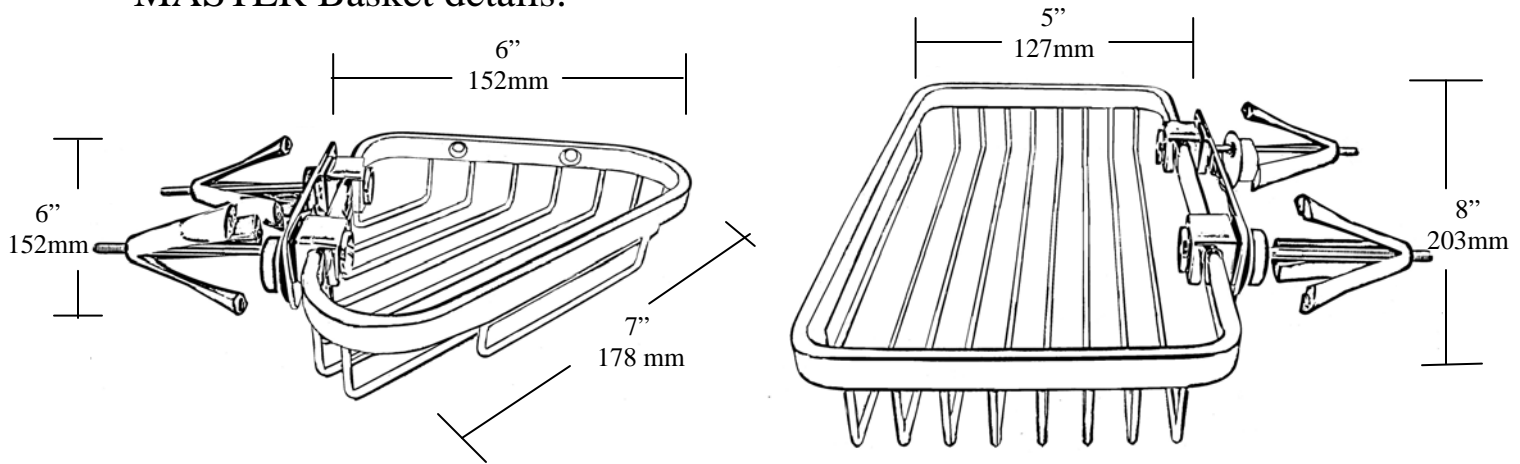
2000824

INSTALLED.

AND STILL COUNTING ...



MASTER Basket details:



| INSTALLED DIMENSIONS | CORNER BASKET | RECTANGULAR BASKET |
|----------------------|---------------|--------------------|
| PROJECTION OFF WALL | 6" (152 mm) | 5" (127 mm) |
| WIDTH | 6" (152 mm) | 8" (203 mm) |
| DEPTH | 1.5" (38 mm) | 1.5" (38 mm) |

MASTER Basket MATERIALS

WALL FLANGE— 1/16" (1.6mm) stamped Stainless Steel Plate.

MOUNT BRACKET— Cast Stainless Steel Bracket and Insert Cap with rubber gasket, to seal in the mounting screw.

STRUCTURAL RIM— 1/2" (12.5mm), Stainless Steel, thickness 0.25" (6.25mm). Structural Rim runs complete length of Basket parameter.

WIRE BASE— 1/8" (3.2mm) Stainless Steel Wires welded to Structural Rim.

FINISH— Stainless Steel is polished to a CHROME *MIRROR* appearance. Optional Plasma Vapor Deposition (PVD) metallic finishes available. 10 Year Warrantee.

MASTER ANCHOR MATERIALS

SCREWS— 8-32 X 3.5" Stainless Steel Machine Screw.

FACEPLATES & WINGS— Fire Retardant Structurally Engineered Plastics.

TAPE— 3M® Double Sided Watertight Tape.

SPECIFICATION

INSTALL THE **MASTER Baskets** WITH THE SUPPLIED **MASTER Anchors** by **WINGITS**

Installation of the MASTER Baskets with the MASTER Anchor is GUARANTEED!

Toll free: 877.894.6448

sales@wingits.com

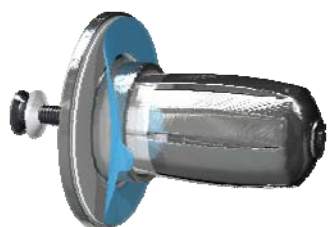
• www.wingits.com



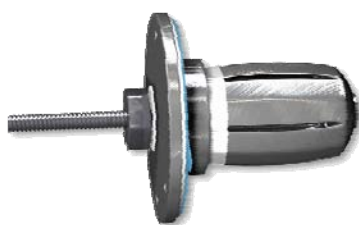


WORLD'S STRONGEST FIXTURES AND FASTENERS

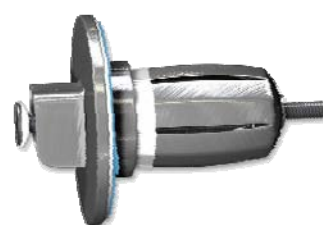
WingIts' Fastening Systems - PATENTED WORLDWIDE



**Stainless Steel Beast
"SSB" Grab Bar WingIt
SSBGBW40**



**Reverse Grab Bar WingIt
(2" X 3" Frame)
SRGBW40**



**Suspension WingIt
XGBW40**



**Bath Accessory WingIt
BAW30**



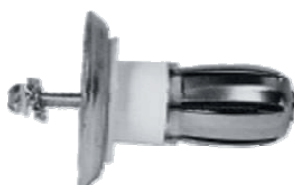
**Refined Engineered Safety
"RES" Grab Bar WingIt
RESGBW35**



**MASTER Anchor
MAW35**



**Generic Commercial WingIt
GCW40**



**Side Set Screw WingIt
SSGBW40**



**Counter Top WingIt
CTW40**

TOLL FREE: 877-894-6448

sales@wingits.com ■ www.wingits.com



Stainless Steel Beast Grab Bar WingIt™

PART # - SSBGBW40

Visit www.wingits.com
to view an easy installation video!



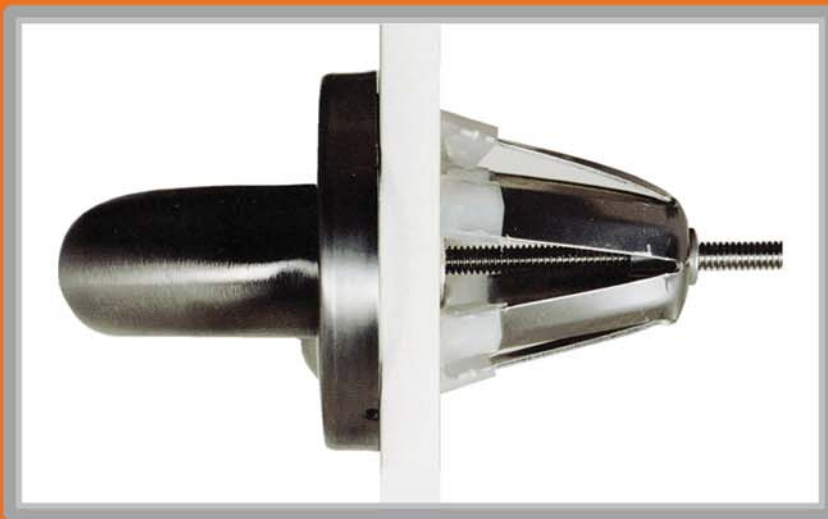
The World's Strongest Fastener™

- Exceeds ADA Guidelines and ALL Building Codes
- Eliminates the need for Blocking! - **WATERPROOF**
- Rated up to **800 lbs.** in drywall with tile
- Compatible with WingIts' Grab Bars

as seen on



MADE WITH PRIDE IN THE U.S.A.



AS EASY AS ...



DRILL IT. INSTALL IT. MOUNT IT.

OVER TWO MILLION
2,000,816
INSTALLED.
AND STILL COUNTING...



Install GBW40
easily with the
APACHE200

1-1/4" DRILL BIT

Call us at 877.894.6448

Visit us at www.wingits.com

Email us at sales@wingits.com



COMMERCIAL GRAB BAR FASTENING SYSTEM - INSTALLATION GUIDE

WINGITS' GRAB BAR FASTENING SYSTEMS EXCEED BUILDING CODES FOR GRAB BARS IN THE FOLLOWING WALL SUBSTRATES:

| |
|---|
| * 5/8" drywall—painted or wallpapered |
| * 1/2" or 5/8" drywall with tub surrounds |
| * 1/2" or 5/8" drywall with tile, marble and all stone |
| * 1/2" or 5/8" drywall with any panel types including fiberglass, faux marble, acrylic and plastics |
| * Multiple layers of drywall |
| * Plaster and lathe |
| * 1/4" acrylic/fiberglass tub surrounds |
| * Most wall panels |
| * All masonry type boards, with or without decorative panels |

NEVER INSTALL ANY FASTENER INTO WET OR DETERIORATING WALLS!

STRUCTURAL BLOCKING MUST BE USED IN **PLAIN 1/2" DRYWALL** when attempting to meet commercial building codes.

MAKE SURE YOU HAVE THE RIGHT SIZE WingIt

- > **GBW40** Standard WingIt is used in walls framed with 2 X 4's (3-1/2" hollow or larger).
- > **SRGBW40** Reverse WingIt is used in walls framed with 2 X 3's (2-1/2" hollow or larger).
- > WingIts come standard with a Stainless steel 4" machine screw for walls up to 1-1/4" thick. Longer Screws Available for thicker walls.

CALL FOR CUSTOM PRODUCTS 877.894.6448

LOCATION: To ensure adequate clearance, a stud finder should

FOR MAXIMUM SAFETY AND TO MEET ADA REQUIREMENTS, GRAB BARS SHOULD BE INSTALLED HORIZONTALLY 33-36 INCHES FROM THE FLOOR

be used to verify there are no studs within the area where the WingIt will be installed. Once inserted, each wing assembly will spring open almost 3" in diameter.

Tools Required:

- * Screwdriver
- * 1.25" Drill (Our **APACHE 200** rated @ 200 holes in ceramic wall tile)

Before you install:

Verify the length of the grab bar by measuring from the inside of one flange to the outside of the other.

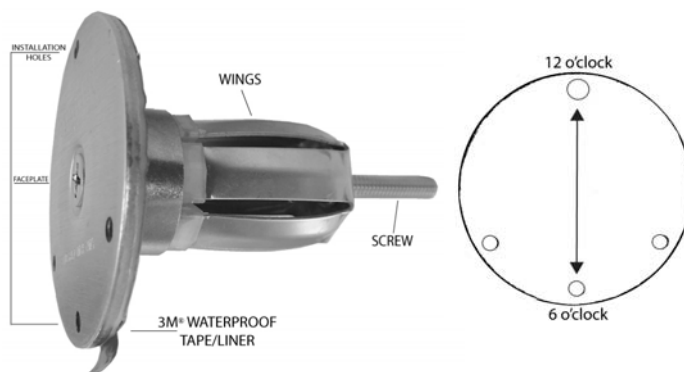
(Continued....)

Make sure that there is at least 1.5" away from the edge of the stud. *If concerned*, drill a pilot hole and insert a piece of wire in the shape of an "L" - twirl the wire to make sure that there is nothing in the way.

Drill a 1-1/4" hole in the wall precisely at the center point where each grab bar flange will align.

Clean wall surface.

Installing with Grab Bars from WingIts™



WingIts' Grab Bar Flanges have 3 holes and TWO SLOTS in each flange. Use the TWO SLOTS to attach the grab bar to FACEPLATE.

1. Remove the liner from the 3M® WATERPROOF ADHESIVE on the WingIts
2. Back-out the center screw about the same distance as the wall thickness.
3. Insert the Grab Bar WingIts into the wall with the holes aligned vertically (12 & 6 o'clock).
4. Hold down firmly, allowing the adhesive to stick.
5. Push the screw head to the faceplate to "pop" the WINGS behind the wall (optionally, hit the screw head with a mallet to eject the WINGS).
6. Pull on the screw head and tighten the screw.
7. Attach the Grab Bar with the supplied 10-32X3/16" s/s screws.

WingIts' 18/8 Stainless Steel Grab Bar



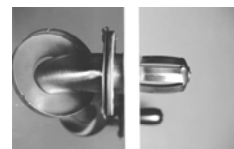
MOUNT WITH 2 SCREWS TOP & BOTTOM

With NON-WingIts' Grab Bars-

Confirm the Bar's compatibility with WingIts – 877.894.4466

The WingIts must be assembled to the Grab Bar PRIOR to inserting into the wall as the installation must be more precise. The FACEPLATE hole alignment to the grab bar flange hole MUST be exact.

- * Temporarily attach the WingIts to the Grab Bar
- * Remove the liner from the 3M® WATERPROOF ADHESIVE on the WingIts
- * Insert the WingIts using the Grab Bar as a template
- * Push on Grab Bar for 1/2 a minute to adhere WingIts to the wall
- * Remove Grab Bar
- * Activate and tighten the WingIts as stated in Steps 2—9 above.





Refined Engineered Safety

GRAB BAR FASTENING SYSTEM

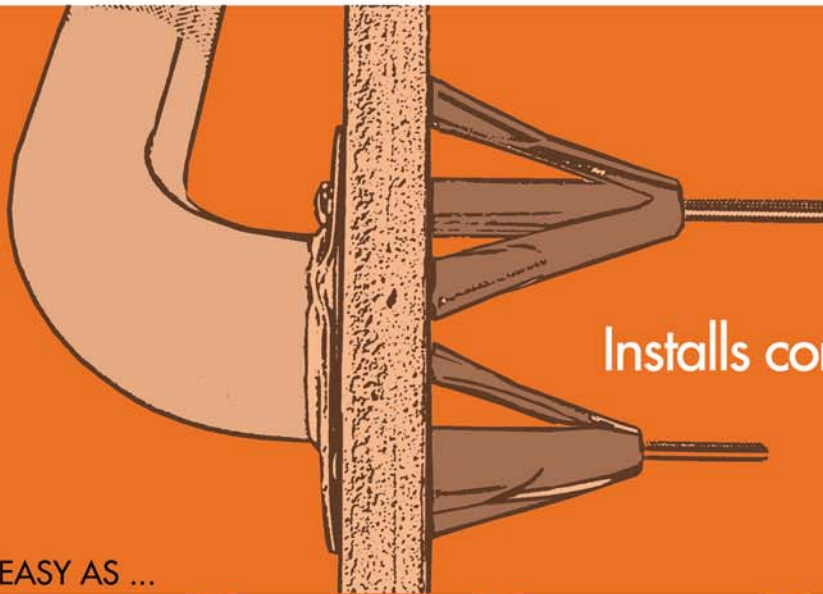
PART # - RESGBW35 - Sold in Sets of 2 (Typical Grab Bar)

The World's Strongest Fastener™

- Meets ADA Guidelines and ALL Building Codes
- Eliminates the need for Blocking - **Watertight**
- Rated up to **600 lbs.** in drywall with tile
- Works with WingIts' Grab Bars



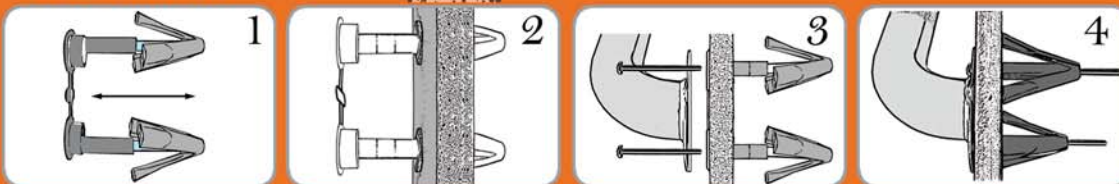
MADE WITH PRIDE IN THE U.S.A.



OVER TWO MILLION
2,000,826
INSTALLED.
AND STILL COUNTING...

Installs completely **WATERPROOF**
—even over grout lines!

AS EASY AS ...



TOOLS REQUIRED:

- Tape Measure to layout
- 3/4" Drill
- Phillips Screwdriver

DRILL IT. INSTALL IT. MOUNT IT.

RES WINGITS are easily installed with the APACHE200 3/4" DRILL BIT

Call us at 877.894.6448 • Visit us at www.wingits.com • Email us at sales@wingits.com



REFINED ENGINEERED SAFETY GRAB BAR WINGIT *INSTALLATION GUIDE*

WingIt's Residential Grab Bar Fastening Systems Meet Building Codes for Grab Bars in the Following Wall Substrates:

| |
|---|
| * 5/8" drywall—painted or wallpapered |
| * 1/2" or 5/8" drywall with tub surrounds |
| * 1/2" or 5/8" drywall with tile, marble and all stone |
| * 1/2" or 5/8" drywall with any panel types including fiberglass, faux marble, acrylic and plastics |
| * Multiple layers of drywall |
| * Plaster and lath |
| * 1/4" acrylic/fiberglass tub surrounds |
| * Most wall panels |
| * All masonry type boards, with or without decorative panels |

NEVER INSTALL ANY FASTENER INTO WET OR DETERIORATING WALLS!

DO NOT INSTALL WingIt® into BARE 1/2" drywall when attempting to meet commercial building codes.

LOCATION:

To ensure adequate clearance, use a stud finder. Minimum 1" clearance required from centerline of WingIt installation.

TOOLS REQUIRED:

- * **Screwdriver & 3/4" Drill** (our APACHE 200 drill bit—rated @ 200 holes in ceramic wall tile)

GRAB BAR LENGTH

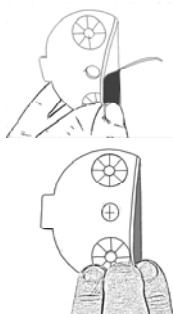
Before you install Verify the length of the grab bar by measuring from the outside of one flange to the inside of the other.



Avoid WALL FRAMING (studs)—One inch clearance needed from Center of each WingIt installation.

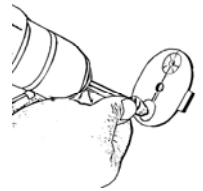
1. PEEL the 1/4" Liner (scored) off the Tape and fold up until properly placed.

2. Determine location of the Grab Bar and mark the length on the wall, then place TAPE with the center hole over mark. Stick

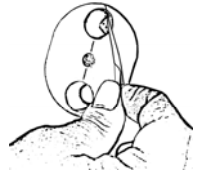


tape to the wall Remove remaining Liner and complete adhesion.

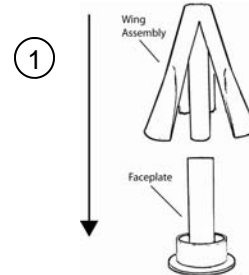
3. Using the Tape as a template, Drill out two 3/4" holes. For a fast, easy installation, use the Apache200 Drill Bit—rated @ 200 holes in ceramic wall tile.



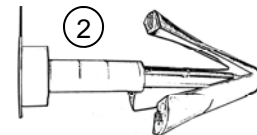
1. Once the holes are drilled, remove TAPE liner



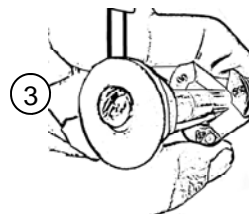
Install RES Grab Bar WingIt



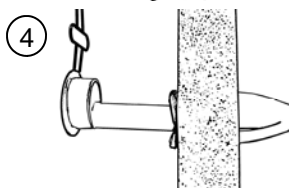
1. Place the FACEPLATE on the table insert the WINGS into the FACEPLATE (the tubes inter-lock).



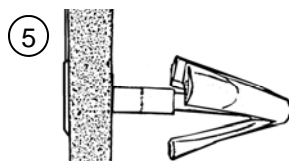
2. Extend the WingIt.



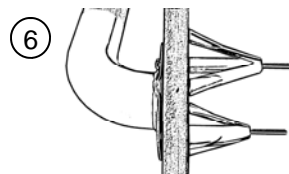
3. Compress and insert the WINGS into the holes.



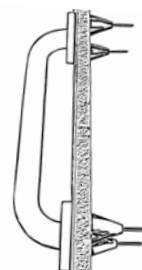
4. WINGS should be FLUSH with the wall surface.



5. Pop WingIt through the hole by pushing on the Faceplate or thread the screw in and push the Wing through.



6. Using the enclosed 3.5" Stainless Steel Screw, Attach the grab bar to the WingIt.



Grab Bar installed with RES Grab Bar WingIts.



Visit www.wingits.com
to view easy installation videos!

MASTER Anchor™

PART# - MAW35

The World's Strongest Fastener™

- NEVER Loosens!
- Installs in ALL Hollow Walls - in just minutes!
- Rated up to **300 lbs.** in drywall
- Handles vector forces 360°
- Objects can be easily removed or replaced

DRILL IT. INSTALL IT. MOUNT IT.

Fire Retardant, Structural Plastic & S/S Construction



MADE WITH PRIDE IN THE U.S.A

MASTER Anchor

STANDARD HOLLOW WALL ANCHOR

- Uses 8-32 X 3 1/2" Stainless Steel Screws
- Made with Fire Retardant Plastics
- Thousand of Uses



PART# - MAW35

OVER TWO MILLION

2000826

INSTALLED.

AND STILL COUNTING ...

MASTER Anchor

with HOOK PLATE

HP

- Uses 8-32 X 3 1/2" Stainless Steel Screws and Hook Plate
- Hang heavy mirrors and pictures
- Safe for indoor and outdoor use



PART# - MAWHP35

MASTER Anchor

SUPER DUTY

SD

- Uses 10-32 X 3 1/2" Stainless Steel Screws
- Great for mounting Flat Screen TVs*
- For items with larger mounting holes
- Superior design - installs in minutes!

*Recommended for Low-Profile & Tilting Mounts
(Not Full Motion Mounts) - see www.wingits.com



PART# - MAWSD35

MASTER Anchor

with OFFSET for minimal reveal

OS

- For installation where mounting hole is less than 1/2" from edge
- Uses 8-32 X 3 1/2" Stainless Steel Screws
- Great for shelving
- Superior design for custom install



PART# - MAWOS35

MASTER Anchor

SUPER DUTY WITH OFFSET

SDOS

- For installations where mounting hole is less than 1/2" from edge
- Uses 10-32 X 3 1/2" Stainless Steel Screws
- For items with larger mounting holes
- Superior design - easy install every time



PART# - MAWSDOS35

ALL MASTER ANCHORS ARE EASILY INSTALLED WITH THE APACHE200 3/4" DRILL BIT

Call us at 877.894.6448

Visit us at www.wingits.com

Email us at sales@wingits.com



• The World's Strongest Fasteners & Fixtures™ •

Typical Installations...

MAW35

- Bath Accessories
- Window Dressing
- Typical Shelving
- Dispensers
- Most Wall Mount Accessories

MAWHP35

- Heavy Mirrors
- Heavy Pictures

MAWOS35

- Wall Mount Accessories with less than 1/2" from mount hole to product edge

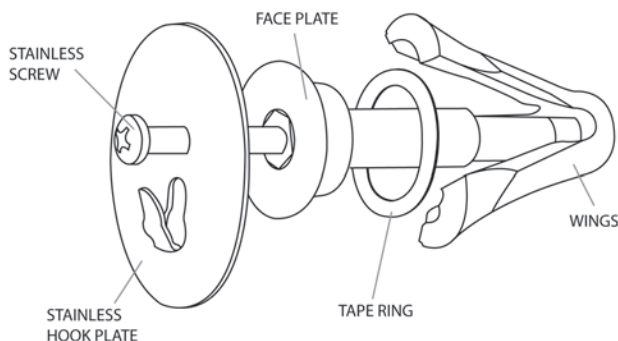
MAWSD35

- Flat Screen TVs*
- Bath Partitions
- Diaper Changing Tables

*Recommended for Low-Profile & Tilting Mounts (Not Full Motion Mounts) - see www.wingits.com

MAWSDOS35

- Items with larger mount holes that are less than 1/2" from product edge

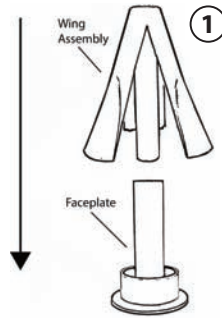
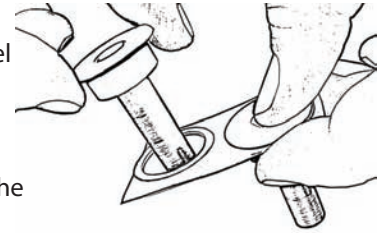


Install Instructions:

For Watertight application peel Tape Ring off liner, place Tape on Faceplate and remove paper cover.

For mirrors and pictures, use the optional Stainless Hook Plate.

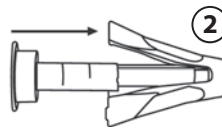
Surface Preparation - Determine where to install MAW - Drill 3/4" hole using the APACHE200 (rated @ 200 holes in ceramic wall tile). The standard MASTER Anchor is used in wall substrates up to 1.3" thick - call for other sizes.



1. Insert the WINGS into the FACEPLATE (the tubes interlock).

2. Extend the WingIt to full length.

3. Compress and insert the WINGS into the holes.

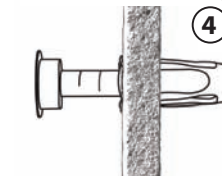


4. WINGS should be FLUSH with the wall surface.

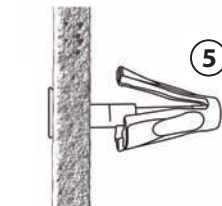
5. Pop WingIt through the hole by pushing on the Faceplate.



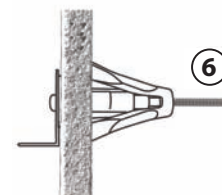
6. Using the enclosed 3.5" Stainless Steel Screw, attach the object to the WingIt.



NOTE: For individual mounting points where the object will be subject to considerable torque (rotational forces) - use at least TWO MASTER ANCHORS.



Note: Strength and stability are greatly affected by projection off the wall surface and the length of interaction with the wall surface. Call us at 877.894.6448 for guidance.



WingIts are designed to be used in vertical walls only - **DO NOT USE IN CEILINGS**

View Master Anchor Installation Videos at:
www.wingits.com



Bath Accessory WingIt™

PART # - BAW30

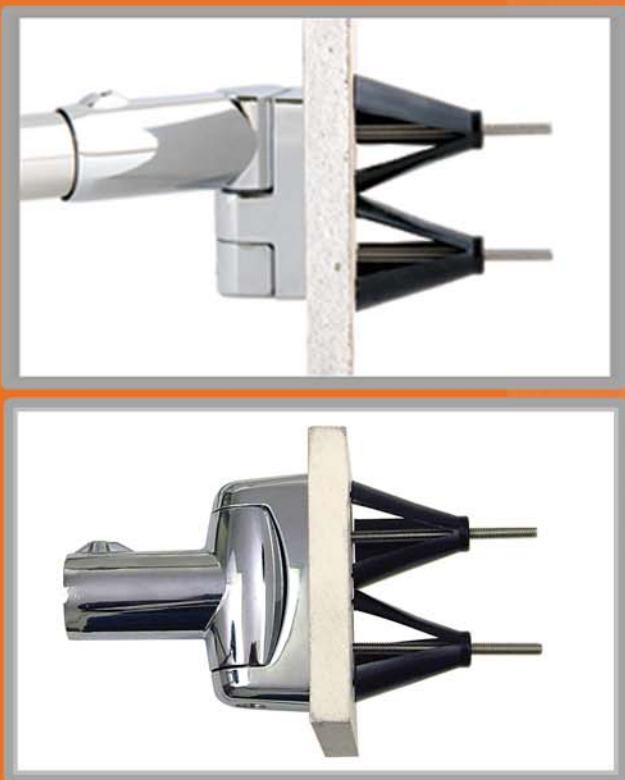
The World's Strongest Fastener™

- Eliminates the need for Blocking! - **WATERPROOF**
- WingIts - NEVER LOOSEN! - PREVENTS SAG!
- GUARANTEED INSTALLATION for ALL WingIts curved Shower Rods and Oval Bath Accessories



DRILL IT . INSTALL IT . MOUNT IT

Fire Retardant, Structural Plastic & Stainless Steel Construction



OVER TWO MILLION
2,000,826
INSTALLED.
AND STILL COUNTING...

High Strength
Fire Retardant Plastics
WATERPROOF Seal Tape

Can incorporate our
Stainless Steel Cover Plates

Installs easily through ceramic wall
tile with our industrial grade
APACHE200 3/4" Drill Bit

Call us at 877.894.6448

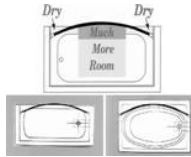
Visit us at www.wingits.com

Email us at sales@wingits.com



BATH ACCESSORY WINGIT INSTALLATION FOR OVAL SUITE AND ALL CRESCENT RODS

LOCATION - ALL CURVED RODS MUST BE INSTALLED 3" FURTHER INTO THE SHOWER than standard straight rods – keeping the water in the tub.



Crescent *curved* Shower Rods give 25% more room. Reduced Bow Crescent Rod should be used in Limited Space Conditions.

NEW CONSTRUCTION -

Install the Crescent Shower Rod or OVAL Shower Rod 3"-5" further in than the edge of the tub.

EXISTING INSTALLATION -

Use our matching stainless steel Cover Plates to conceal the existing installation holes.

Picture at right shows the **Crescent Rod Cover Plate** and Mounting Bracket aligned with the existing rod (Crescent Rod will be installed 3" further into the tub and the holes will still be covered).

Install the Crescent Rod or OVAL Rod at the same height as existing rod, allowing for the use of a **Standard Shower Curtain.**



BATH ACCESSORY WINGITS are the **ONLY GUARANTEED** Installation.

Install using our patented Bath Accessory WingIt (BAW).

Guaranteed to NEVER Loosen - NEVER Sag!

Bath Accessory WingIts (BAW30) consist of:

- (4) 3" Stainless Steel Screws*
- (4) Wings
- (2) Faceplates (w/ washers)
- (2) Waterproof Adhesive Tape

*Longer Screws Available.

Use one set of Bath Accessory WingIts per Rod.

For GUARANTEED INSTALLATIONS INTO STRUCTURAL BLOCKING:

Order the Bath Accessory WingIt Faceplate Assembly (BAWFA) – Bath Accessory Faceplate and WATERPROOF tape – 877.894.6448.

Installing WingIts' Shower Rods & *OVAL* Bath Accessories

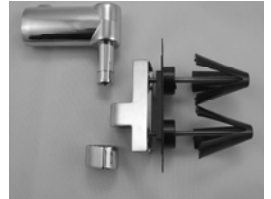
Tools Required:

- Screwdriver
- 3/4" Drill (Our **APACHE 200** rated @ 200 holes in ceramic wall tile)

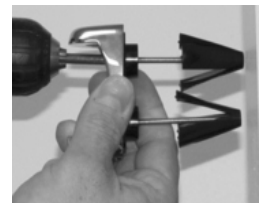
STEP 1** – Separate the pieces of the bracket and use the Bracket to determine the location of the holes. Adhere the tape to the wall in the proper location. Drill 3/4" holes at the positions matching the holes in the tape. For ceramic tile walls, use our Industrial Carbide 3/4" **Apache 200** Drill Bit.

****The installation holes need to be clean on both sides of the wall. Cut through the back of the wall slowly.**

STEP 2— Assemble the WingIt onto the Bracket. If using the Back Plate, apply to the faceplate prior to assembling the wings onto the screws.



STEP 3— Using a screw-gun, insert the WingIt into the drilled holes. Push Wings through the wall - *activating* the Wings in the wall hollow. The Faceplate will adhere to the wall. **Hold the mounting bracket away from the wall and tighten screws –**



ALTERNATE TIGHTENING the SCREWS to INSURE the WINGS INTERACT WITH the BACK of the WALL.

Assemble the Bracket and Accessories.

You are using the **"World's Strongest Fastener"**

NOTE: The SET SCREWS for assembling the Bracket may be located in the standard Hardware Package. These set screws are small, please look carefully. The wrench to install the Set Screws is included.

WingIt Innovations, LLC • 714 5th Avenue • Bradley Beach, NJ 07720
Toll Free: 877-894-6448 • Fax: 732-869-9474
E-mail: sales@wingits.com • Website: www.wingits.com

SIDE SET SCREW CONCEALED FLANGE GRAB BAR WINGIT

WingIts for Set Screw Grab Bars: Grab Bars manufactured with fixed flanges and mounted to Base Plates by set screws can use our Set Screw Grab Bar WingIt - SSGBW40.

- * Simple **WATERPROOF** installation
- * Exceeds Building codes and government guidelines for load requirements on grab bars and safety rails
- * The most cost effective method of installing Set Screw Grab Bars
- * Fifteen minute installation

Side view of
SSGBW40

Base Plate



Set Screws tighten
onto the Base Plate
that is secured to
our WingIt

GENERIC COMMERCIAL WINGIT



For use with Commercial Railings, Diaper Changing Tables, and many Heavy Duty Commercial Items.

- * Installs in minutes into all hollow wall substrates
- * **WATERPROOF** and Fire Retardant
- * Poses the same technology and structural capabilities as the Award Winning Grab Bar WingIt
- * Can "hide" behind any accessory—the faceplate is 1.9" in diameter only .04" thick and is made from structural plastic
- * Incorporates our Patented Stainless Steel Wing Assembly
- * Made for maximum strength— unlimited applications

Call us for application approvals!

REVERSE GRAB BAR WINGIT - For Walls with 2' X 3' studs

The Reverse WingIt is installed the same way as the Grab Bar WingIt, except the Reverse WingIt is secured with a nut and the screw remains on the outside of the wall (reverse). The exposed screw will fit inside the Grab Bar .



COUNTER TOP WINGIT



Designed to hold Counter Tops & Bar Tops in place without being visible. Stainless Steel Bracket designed for quick attachment.



WINGIT SUSPENSION SYSTEM — TGI Fridays and McDonalds



- Stainless Suspension System for Vanities, Counters and Work Spaces.
- Holds to 1,000# - WITHOUT Blocking. Suspends between two walls.
- Completely Waterproof installation into New and Existing Conditions.
- TGI Friday standard product for All Bathroom Vanities –
 - * Allowed for use of standard sized Vanities regardless of conditions.
 - * Reduced installation time from More Than a Day to ½ HOUR.
 - * Vanity Top doesn't touch the wall. No Backsplash – simply wash with hose.
- Used in McDonalds for Bathroom Vanity Tops and Work Spaces.

WINGITS' PREMIUM DECORATIVE GRAB BARS

- * **WORLD'S LARGEST SELECTION**
- * **MADE FROM 304 (18/8) STAINLESS STEEL**
- * **MADE TO WORK WITH OR WITHOUT THE WINGITS FASTENING SYSTEM**
- * **EXCEED ALL BUILDING CODES, ADA REQUIREMENTS AND GOVERNMENT GUIDELINES**
- * **CONCEALED FLANGE COVERS STANDARD ON ALL BARS**
- * **NON-INSTITUTIONAL DESIGNER LOOK**
- * **OFFERED AT SIGNIFICANT SAVINGS**

Grab Bar Size & Color Options



**Winglts' Bright Stainless Steel
Grab Bars**

Available in both 1-1/4" (WGB5PSXX)
and 1-1/2" (WGB6PSXX) Diameters
XX=Length
(12, 16, 18, 24, 30, 32, 36, 42 & 48)*



**Winglts' Satin Stainless Steel
Grab Bars**

Available in both 1-1/4" (WGB5SSXX)
and 1-1/2" (WGB6SSXX) Diameters
XX=Length
(12, 16, 18, 24, 30, 32, 36, 42 & 48)*



**Winglts' Bright Diamond Knurled
Stainless Steel Grab Bars**

Available in both 1-1/4" (WGB5PSKNXX)
and 1-1/2" (WGB6PSKNXX) Diameters
XX=Length
(12, 16, 18, 24, 30, 32, 36, 42 & 48)*



**Winglts' Satin Diamond Knurled
Stainless Steel Grab Bars**

Available in both 1-1/4" (WGB5SSKNXX)
and 1-1/2" (WGB6SSKNXX) Diameters
XX=Length
(12, 16, 18, 24, 30, 32, 36, 42 & 48)*



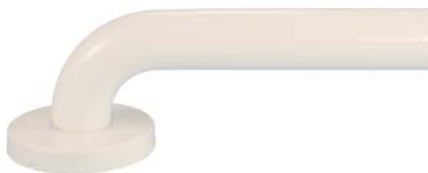
**Winglts' Bright Peened
Stainless Steel Grab Bars**

Available in both 1-1/4" (WGB5PSPEXX)
and 1-1/2" (WGB6PSPEXX) Diameters
XX=Length
(12, 16, 18, 24, 30, 32, 36, 42 & 48)*



**Winglts' Satin Peened
Stainless Steel Grab Bars**

Available in both 1-1/4" (WGB5SSPEXX)
and 1-1/2" (WGB6SSPEXX) Diameters
XX=Length
(12, 16, 18, 24, 30, 32, 36, 42 & 48)*



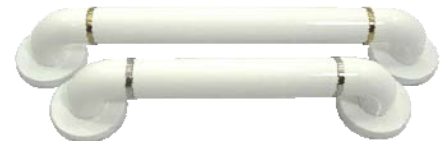
**Winglts' Poly-Painted
Stainless Steel Grab Bars**

Available in both 1-1/4" (WGB5YSXXZZ)
and 1-1/2" (WGB6YSXXZZ) Diameters
XX=Length
(12, 16, 18, 24, 30, 32, 36, 42 & 48)*
ZZ=Color (Biscuit, White, Bone)**



**PURE Elegance
Grab Bars**

Available in 1-1/4" (WGB5PUXXZZ)
Diameter
XX=Length
(12, 16, 18, 24, 30, 32, 36, 42 & 48)*
ZZ=Color (Biscuit, White, Bone)**



**TRUE Elegance
Grab Bars**

Available in 1-1/2" (WGB6TRXXWH)
Diameter
XX=Length
(12, 16, 18, 24, 30, 32, 36, 42 & 48)*
White w/Silver Band

*Custom sizes available upon request. **Custom colors available upon request.

TOLL FREE: 877.894.6448

WEB: WWW.WINGITS.COM

E-MAIL: SALES@WINGITS.COM

WINGITS SATIN AND POLISHED GRAB BARS

**Leading North American provider of
Stainless Steel Grab Bars . . . Period!**



WingIts has developed the Highest Quality Satin and Polished Stainless Steel Grab Bars.

- ▶ Polished Grab Bars have an incredible luster that is second to none - with virtually no lathe marks or polish streaks.
- ▶ Made from 18/8 (304) Stainless Steel
- ▶ Completely concealed flanges
- ▶ Guaranteed to **NEVER** fail when installed with WingIts Patented Grab Bar Fastener—completely **WATERPROOF!**
- ▶ Available in various lengths for both 1-1/2" and 1-1/4" OD.
- ▶ Mounting Flanges have 5 mounting holes including slotted holes to make high volume installs go quickly and smoothly.

WINGITS SURE-GRIP STAINLESS STEEL GRAB BARS



**The World's Finest Knurled Grab Bar —
Best Grip and Easy to Clean.
Available in Polished & Satin finishes.**



WingIts' Satin Peened Grab Bar

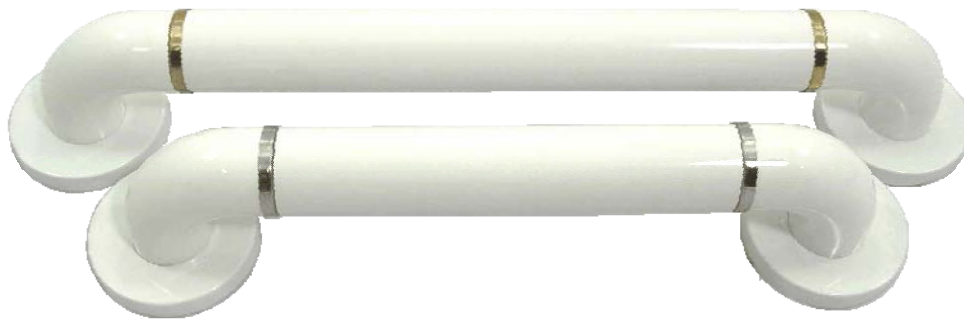
***Beauty & Safety
all in one***



WingIts' Polished Peened Grab Bar

***Superior to
Chrome***

TRUE ELEGANCE™ GRAB BARS



Heavy Structural Aluminum
Tube Core – strength &

TRUE ELEGANCE™ Grab Bars comply with American Disabilities Act Accessibility Guidelines (ADAAG) and Safety Rails in Hazardous Locations criteria and exceed all ADA specifications .

- ▶ ABS Flange, Elbows and Straights insure uniformity
- ▶ **NO visible Seam Lines!** Our new SEAMLESS Mold Technology
- ▶ Interlocking Components – *only Grab Bar in its class to meet ASTM criteria* – tube or fittings will never rotate
- ▶ Brilliant White ABS with polished stainless steel Deco Rings
- ▶ Designed to be used with the **WingIt Grab Bar Fastening Systems** – or adequate blocking
- ▶ Diameter 1-1/2"

PURE ELEGANCE™ GRAB BARS

Designer NYLON Grab Bars that combine the elegance of seamless nylon with the strength of heavy duty treated steel.

With the Beauty and Strength of **PURE Elegance**, you can now get the support you need with the warmth of seamless

- ▶ Excellent gripping surface for wet hands
- ▶ Easy clean up—no joints to collect dirt and bacteria
- ▶ Heavy one piece steel construction
- ▶ Available in a variety of colors



WINGITS' POLY-PAINTED STAINLESS STEEL GRAB BARS

Paint Options

18-Gauge Stainless Steel Grab Bars coated with Superior White Polyester—a vast improvement over existing Powder Coated Finishes

Durable Polyester paint process allows for interior or exterior use—not affected by sunlight or chemicals.

*Custom Colors are available upon request.

WHITE



BISCUIT



BONE



A Grab Bar that will last a Lifetime and Never Tarnish, Never Fade, Never Look Old, Never Corrode . . . Never a Problem!

**Guaranteed
For Life**



WingIts now offers a revolutionary new process, PVD (Plasma Vapor Deposition) Technology deposited over a stainless steel core.

- ◆ Available in Polished (bright), Satin, and Diamond Grip Grab bars
- ◆ Lifetime Warranty
- ◆ Beautiful metallic finishes (Brass, Gold, Black, Champagne, Grey, Copper, Oil Rubbed Bronze)



Satin Black

Bright Black



Satin Oil Rubbed Bronze

Bright Oil Rubbed Bronze



Satin Gold

Bright Gold



Satin Brass

Bright Brass



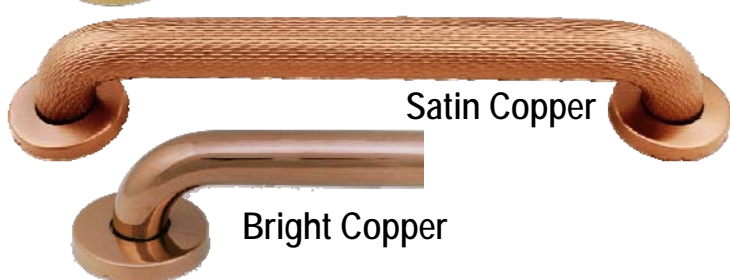
Satin Bronze

Bright Bronze



Satin Grey

Bright Grey



Satin Copper

Bright Copper



Satin Champagne

Bright Champagne

OVAL SUITE

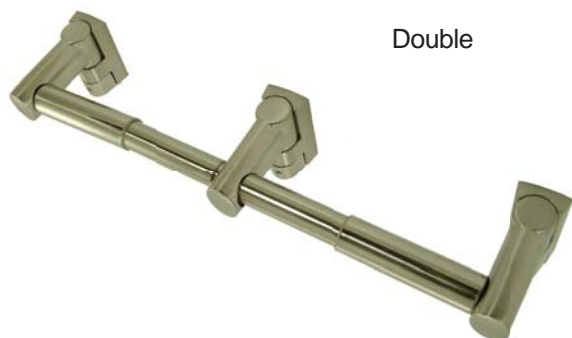
designed for DURABILITY



Contemporary, Sleek Design with Flowing Curves
Structural Stainless Steel - No exposed screws
Installs easily with WingIt Fasteners
Matches OVAL curved Shower Rod



OVAL Toilet Paper Holder with Spring Spindle



Double

Satin Nickel #**WODTPHSN** (Shown)
Bright (Chrome) #**WODTPHBS**



Single

Bright (Chrome) #**WOTPHBS** (Shown)
Satin Nickel #**WOTPHSN**

- Stainless Steel Spring Spindle
- Sleek, Stable Design

OVAL Towel Bar in 24" or 18"



24" Bright (Chrome) #**WOTBS24** (Shown)

18" Bright (Chrome) #**WOTBS18**

24" Satin Nickel #**WOTSS24**

18" Satin Nickel #**WOTSS18**

- Structural Stainless Steel Towel Bars
- *Bowed OVAL* tube - Beauty and Structure

OVAL *curved* Shower Rod

#**WOCBS5** Standard 9" Bow, 5' Bright OVAL Shower Rod

#**WOCSN5** Standard 9" Bow, 5' Satin OVAL Shower Rod

#**WOCBS5-6** Special Reduced 6" Bow, 5' Bright OVAL Shower Rod

#**WOCSN5-6** Special Reduced 6" Bow, 5' Satin OVAL Shower Rod

#**WOCBS6** Standard Bow, 6' Bright OVAL Shower Rod

#**WOCSN6** Standard Bow, 6' Satin OVAL Shower Rod

Matching Cover Plate

#**OCP-CHM** Bright (Shown)

#**OCP-SNM** Satin Nickel

- Conceals Existing Holes

- World's Strongest curved Shower Rod
- Works with ALL Shower Curtains and Hooks
- *OVAL* Tube interlocks into *OVAL* Brackets to ELIMINATE Sag, especially when installed with WingIts



OVAL Glass Shelf in 24" or 18"

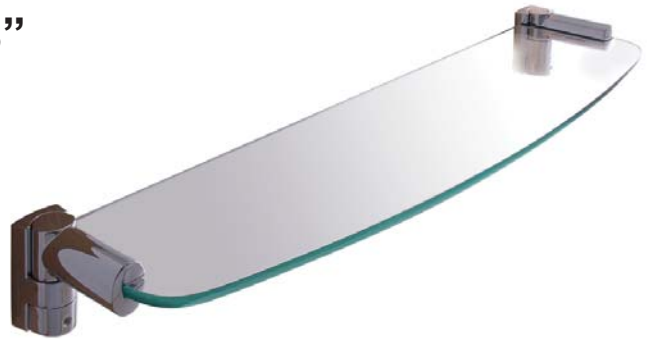
24" Satin Nickel #**WOGS24SN** (Shown)

24" Bright (Chrome) #**WOGS24BS**

18" Satin Nickel #**WOGS18SN**

18" Bright (Chrome) #**WOGS18BS**

- Tempered Bowed Glass
- Securely interlocks into *OVAL* Brackets



OVAL Euro Toilet Paper Holders

- European Design
- Stainless Construction
- Solid Core



Satin Nickel #**WOTPHEUSN**

Bright (Chrome) #**WOTPHEUBS** (Shown)



Satin Nickel #**WOTPHBRSN** (Shown)

Bright (Chrome) #**WOTPHBRBS**

OVAL Towel Ring



Satin Nickel
#**WOTRINGSN** (Shown)

Bright (Chrome)
#**WOTRINGBS**

- Reinforced Ring
- Secure Fit

OVAL Euro Towel Ring



Bright (Chrome)
#**WOETRINGSBS** (Shown)

Satin Nickel
#**WOTRINGSN**

- Solid Metal Ring
- European Design

OVAL Double Robe Hook



Bright (Chrome) (Shown)
#**WODRHBS**

Satin Nickel
#**WODRHBN**

- Structural
- Angled back for Safety

OVAL Soap Dish



Satin Nickel
#**WOSDSN** (Shown)

Bright (Chrome)
#**WOSDBS**

- Structural
- Easy to Clean





APACHE200 DRILL BITS

- Industrial Carbide Drill Bit - Rated @ 200 holes through Ceramic wall tile
- Guaranteed to NEVER WALK
- Designed for Ceramic, Marble and Plaster
- Fits standard and cordless drills
- Available individually in a 3/4" (RES, MAW, or BAW) (WA200GT34) or 1 1/4" (GBW40) diameter (WA200GT54)
- Available in a 3 piece kit including 1/4", 3/4" and 1 1/4" diameters (WA2003PCS)
- Available in a 5 piece kit including 1/4", 1/2", 3/4", 1" & 1 1/4" diameters (WA2005PCS)

CTHS034: 3/4" CARBIDE HOLE SAW FOR CRESCENT ROD WINGIT INSTALLATION

CTHS114: CARBIDE TIPPED 1-1/4" HOLE SAW

ARB38: 3/8" INDUSTRIAL GRADE QUICK RELEASE ARBOR

MDB14: 1/4" INDUSTRIAL GRADE CARBIDE DRILL BIT

BCSR: Crescent Stainless Steel Cover Plate - Set of 2
Matching Stainless Steel (Bright or Satin), covers existing holes while properly locating the curved rod, matches Crescent curved Shower Rods

OCP: OVAL™ Stainless Steel Cover Plate - Set of 2
Matching Stainless Steel (Bright or Satin), covers existing holes while properly locating the curved rod, matches OVAL™ curved Shower Rods

10X20SMS-6: Pan Head Stainless Steel Screw - Set of 6
2" Stainless steel screw used when mounting grab bars into blocking. One packet includes 6 screws. One packet per grab bar purchased.

SARB14: 1/4" Arbor for 3/4" Carbide Hole Saw

Provides longer life and faster cutting holes as needed in ceramic tile, drywall, fiberboard, fiberglass and wood. Delivers a clean and professional solution. One per package.