

Georgetown

Forest River



Model 374TS-Espresso Full Body Paint

THE NEW FACE OF FREEDOM



378TS shown with Glazed Cherry Cabinets and Birch Decor

The modern, clean lines of the Georgetown take interior design to the fullest. We have designed the interior of the Georgetown to maximize space and provide you with all the amenities of home. Enjoy a gourmet meal at the free-standing dinette, or your favorite show on the 32" LCD/HD TV and Home Theater. Georgetown gives you a true home on the road.

378TS shown with optional Midnight full body paint





378TS side-by-side four door refrigerator standard

The new Georgetown cockpit has been constructed with comfort and convenience in mind.

From the opulence of the captains chairs to the ergonomic styling of the dashboard, Georgetown has made traveling to your next destination truly an enjoyable experience.

Ample countertop space, 30" over the range microwave oven, solid surface countertops, side-by-side four door refrigerator, and recessed range. The kitchen in the 378TS is made for entertaining.



378TS Kitchen with Glazed Cherry Cabinets



374TS shown with and Black and Tan Decor



374TS Master Suite shown with optional 19" LCD/HD TV



Twin Vessel Sinks and High Definition countertops put the Georgetown 374 in a class of it's own. Combine that with the one-piece fiberglass shower and seat that is now standard in most Georgetown's, and you will realize that at Georgetown, we design with you, our customer in mind.

Our spacious living area and a master suite that includes limestone look columns and pleated drapes will provide quiet comfort during your travels and at your favorite destination.

The perks don't stop on the inside, shown here is the 374TS with our optional Espresso full body paint. A look like this is sure to get you noticed.





350TS & 357QS shown with Glazed Cherry Cabinets, Stainless Steel appliances and Solid Surface countertops



350TS shown with Glazed Cherry Wood and Mahogany Decor (Standard Soft Touch Leatherette Hide-A-Bed Sofa)



350TS or 357QS Bunkhouse option

Why Buy a Georgetown?

- Fiberglass Roof
- Gelcoat Fiberglass Exterior
- One-Piece Side Hinge Cargo Doors
- Electric Awning
- 6.5 Kw Generator
- 30" Entrance Door
- Wrap Around Cockpit
- Solid Surface Countertops
- Undermount Stainless Steel Sink with Flush Solid Surface Covers
- 30" OTR Stainless Steel Microwave
- 9' Curved Door Refrigerator
- Large Stainless Steel Oven with Sealed Burner
- Flush Fit Solid Surface Stove Covers
- Halogen Ceiling Lights In Living Area
- 32" LCD/HD Television & Home Theater
- One-Piece Fiberglass Shower with Seat (n/a 330)
- HD Laminate Bath Countertop
- Vessel Bowl Bathroom Sink(s)
- Radius Bed Base and Mattress Corners
- Pleated Bedroom Draperies

Georgetown's commitment to detail is evident inside and out. From our spacious kitchen, living and dining areas to the design of our bunks, we have thought of everything.

The new generation also brings exciting exterior changes. One-piece windshield, increased exterior storage and the freshest look in the industry. At a glance, you know it's a Georgetown.



A redesigned grill complete with chrome accents give the Georgetown a truly unique and upscale look.



Double pass-through storage compartments (most models)

350TS shown with Standard Graphics Package



INTERIOR DECOR OPTIONS AVAILABLE ON ALL MODELS

HAZELNUT



MAHOGANY



BIRCH



CASHMERE



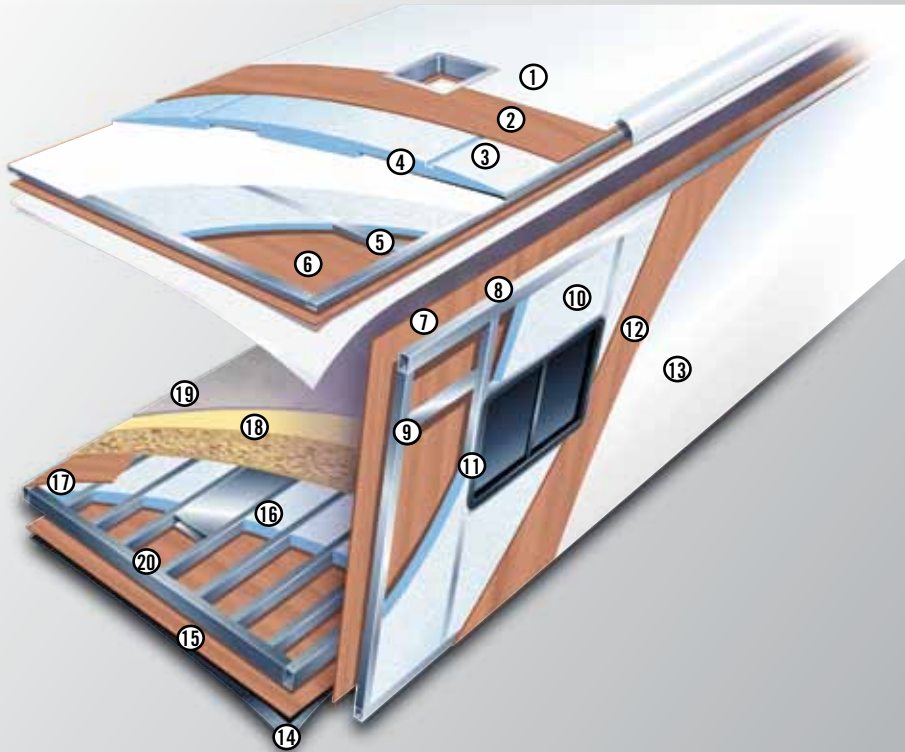
BLACK & TAN



OPULENT GLAZED
CHERRY
INTERIOR WOOD



GEORGETOWN CONSTRUCTION



MULTI-LAYERED LAMINATED ROOF SYSTEM

1. Seamless fiberglass roof
2. Luan Decking
3. Block foam insulation
4. Dual A/C Ducts
5. Tubular aluminum framing
6. Luan

2-INCH VACUUM-BOND LAMINATED SIDEWALLS

7. Decorative interior wall board
8. Electro-galvanized sheet metal backers
9. Tubular aluminum framing
10. Block foam insulation
11. All sidewall openings framed in aluminum
12. Luan
13. Smooth gelcoat fiberglass exterior

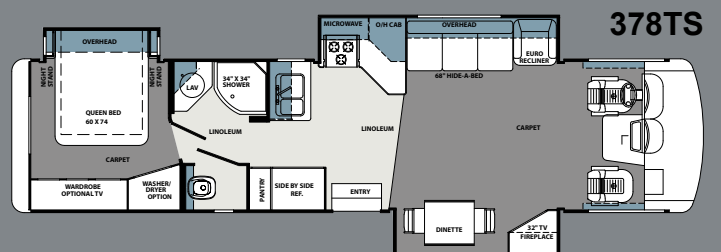
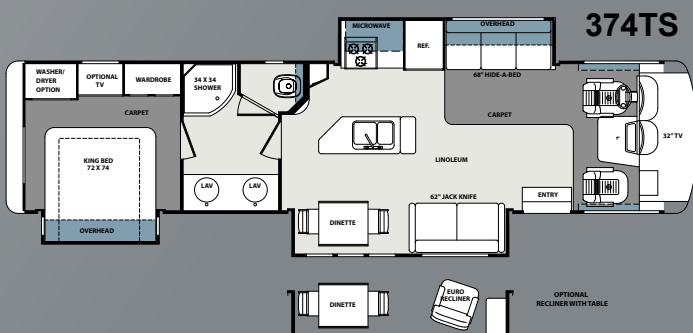
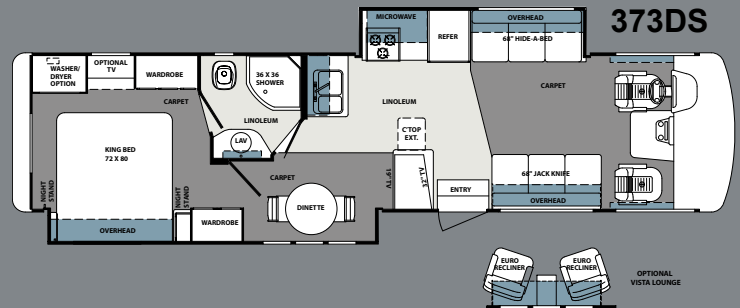
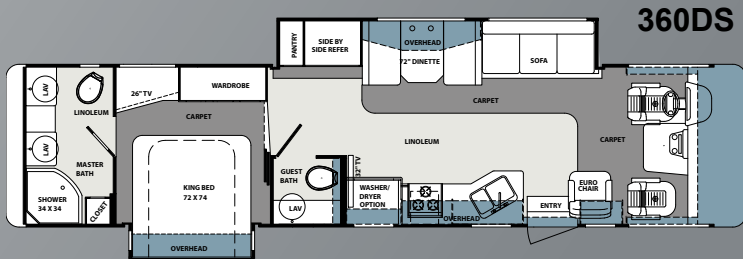
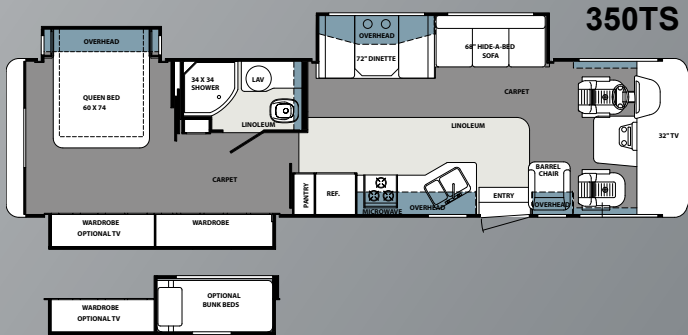
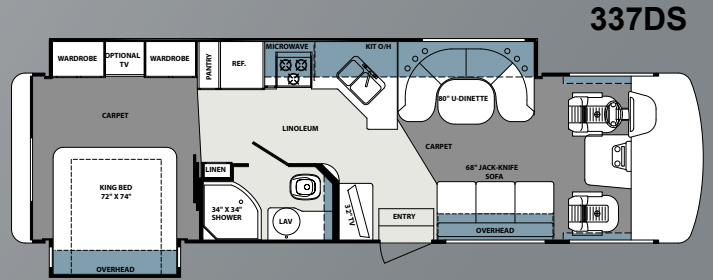
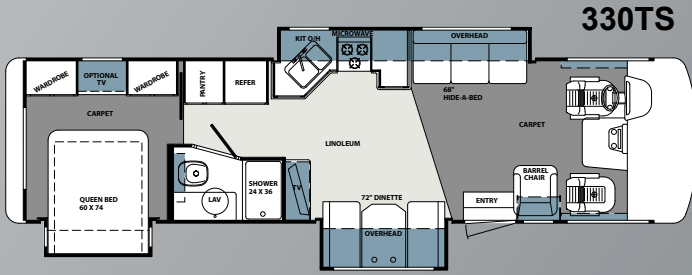
3-INCH VACUUM-BOND LAMINATED FLOOR SYSTEM

14. Fiberglass reinforced vinyl vapor barrier
15. Luan
16. Block foam insulation
17. Virtually seamless floor decking
18. Thick padding
19. Durable carpet
20. 2.5" Steel Framing

DIMENSIONS & CAPACITIES Ford OR Workhorse Chassis (22,000lb. Models Only)

MODEL	330TS	337DS	350TS	357QS	360DS	373DS	374TS	378TS
GCWR (lb.)	26000	26000	26000	26000	26000	26000	26000	26000
GVWR (lb.)	22000	22000	22000	22000	22000	22000	22000	22000
Wheelbase	208"	208"	228"	228"	242"	242"	242"	242"
Fuel Capacity (gal)	75	75	75	75	75	75	75	75
Tire Size	235/80R22.5	235/80R22.5	235/80R22.5	235/80R22.5	235/80R22.5	235/80R22.5	235/80R22.5	235/80R22.5
Interior Height	80"	80"	80"	80"	80"	80"	80"	80"
Interior Width	95 1/2"	95 1/2"	95 1/2"	95 1/2"	95 1/2"	95 1/2"	95 1/2"	95 1/2"
Overall Height w/ AC	12' 1"	12' 1"	12' 3"	12' 3"	12' 3"	12' 3"	12' 3"	12' 3"
Overall Length	34' 6"	33' 7"	36' 4"	37' 0"	37' 11"	37' 10"	37' 9"	37' 6"
Overall Width	101"	101"	101"	101"	101"	101"	101"	101"
Exterior Storage (cu. ft.)	166	145	173	177	197	198	190	198
Fresh Water (gal)	65	65	65	65	65	65	65	65
Black Water (gal)	41	41	41	41	82	41	41	41
Grey Water (gal)	41	41	41	41	82	41	41	41
LP Tank (gal)	24	24	24	24	24	24	29	24
Water Heater (gal)	10	10	10	10	10	10	10	10
Furnace (btu)	35k	35k	35k	35k & 20k	35k	35k	35k	35k & 20k
Patio Awning	18'	18'	14'	15'	17'	10 1/2'	20'	20'

GEORGETOWN FLOORPLANS



GEORGETOWN STANDARDS AND OPTIONS

EXTERIOR

- One-piece laminated fiberglass roof
- High-Gloss Gelcoat fiberglass sidewalls
- Side-hinge baggage doors
- Rotocast one-piece storage compartments
- Cable T.V. and phone jacks
- One-piece windshield
- LED Tailights
- 2 Coach batteries
- Entrance step – electric
- Hitch 5000 lb.
- Automatic hydraulic leveling jacks
- Rear Ladder
- Mud flaps
- Outside shower
- Slideout Room awning(s)
- Power main awning
- 30" entrance door
- A&E electric power awning (opt.)
- Remote heated mirrors (opt.)
- TV antenna with booster
- 22.5" tires with Alcoa aluminum rims
- Deluxe graphics with partial paint package
- Full body paint option (Midnight or Espresso)

STRUCTURAL

- Aluminum framed all openings
- Insulated, formed one-piece baggage doors
- 3" Laminated, steel framed floor with ducted heating
- Laminated alum. framed sidewalls, roof (including all openings)
- Under floor steel truss system

DRIVER/PASSENGER AREA

- Soft Touch Driver/passenger reclining swivel bucket seats
- Auxiliary start switch
- Defroster fans
- Driver/passenger map lights
- Optional driver 6-way power seat
- Front wrap-around privacy curtain
- I.C.C. flash
- Radio – single CD AM/FM
- Radio power selector switch
- Rear vision camera with monitor & audio
- Color Side cameras (opt.)

LIGHTING/DINING/GALLEY

- 30" OTR Stainless Steel Microwave
- 9' Curved Door Stainless Steel Refrigerator
- Stainless Steel Oven w/ Sealed burners
- Solid Surface Kitchen Countertop
- Undermount Stainless Steel Sink with Flush Solid Surface Covers
- Pull-Out Sprayer Faucet
- Recessed solid surface range cover
- Flush Mount Halogen Ceiling and Accent Lighting
- No carpet stepwell
- Satellite Prep
- Slide out pantry (w/a)
- 32" LCD HD TV with Home Theater
- Pleated shades-Day/Night
- Euro recliner with ottoman (opt.) (Std. 360, 378)
- Soft touch leatherette Hide-A-Bed sofa with air mattress

BATH

- 10 gallon gas/electric water heater with DSI
- Vessel Sink(s)
- Black water tank flush system
- Dual control shower faucet with flex head
- Linoleum in bathroom area
- Medicine cabinet (w/a)
- Porcelain Toilet with foot flush
- Shower skylight
- Towel bar
- Washer/dryer (opt. models 373, 374, 378, 360)
- Washer dryer prep (opt. models 373, 374, 378, 360)
- One-Piece fiberglass shower

BEDROOM

- 60" x 75" island queen bed with bedspread, headboard pillow shams and storage below (72 x 75 King Bed models 337, 357, 360 373, 374)
- 19" LCD TV (opt.)
- Window – day/night shades
- Radius corner mattress and bed base

SAFETY

- 110v GFI protected circuit (kitchen, bath, exterior)
- Carbon monoxide detector
- Exit window
- LPG detector
- Smoke alarm
- 3-Point seat belts
- Recess mounted fire extinguisher (inside entry door)

WATER/HEATING/VENTILATION/ POWER

- 50 amp 120v distribution panel and cord
- 65 amp 12v power converter
- Arctic package* (Optional)
- Water filter system (1 micron)
- Ducted in-floor heat 35,000 BTU furnace
- Model 378 two furnaces
- Electric battery disconnect
- Fantastic roof vent – (opt. kitchen, bath)
- Generator – 6.5 Generac (std.)
- Power ceiling fan in bath
- Roof A/C – 13.5 BTU ducted – front (std.)

POPULAR OPTIONS

- Bunkhouse IPO wardrobe (350, 357)
- 15K Air Conditioner in the front
- 13.5K Air Conditioner in the bedroom
- A&E power remote awning
- Color Side cameras
- Second power awning on slideout-373
- 5.5 Onan generator upgrade
- Air Conditioner heat strip(s) (N/A Low Profile A/C(s))
- 19" LCD/HD Bedroom TV
- Convection microwave IPO standard microwave
- Convection microwave and cooktop IPO standard microwave and oven
- Fantastic vent in kitchen or bath
- Free standing dinette with 4 chairs
- Full body paint package
- Heated remote mirrors
- Low profile Air Conditioner
- Dual pane windows
- Vista lounge w/2 euro recliners (337, 373)
- Washer/Dryer

- Washer/Dryer prep
- Arctic Package
- Euro recliner IPO barrel chair
- Power Drivers Seat

Forest River Encourages You to Buy Locally

Forest River, Inc. strongly encourages our retail customers to purchase from their local dealership whenever possible due to the following factors:

- *Our Dealers are as a rule, independently owned and operated businesses. Outside of those customers they personally sold products to, they are not contractually obligated to perform warranty service on Forest River products that were purchased elsewhere. There may be an occasion that you would be required to return to the point of purchase to satisfy warranty requirements.*
- *Although many dealerships will eventually service products not purchased at their place of business, they will usually take care of their customers and other Forest River customers who are traveling away from their local dealer as they would their own.*
- *Local purchases allow a customer to establish a relationship with a dealer close to home. This relationship provides the customer with a convenient location for service and support from a "home town" professional.*
- *The opportunity for a thorough PDI (Pre Delivery Inspection) and product orientation is an additional benefit of buying from your local dealer. Further providing the opportunity for refresher courses or the ability to get questions answered much more conveniently.*
- *For our Canadian customers, there are also requirements which must be met to bring an RV purchased out of the country to their home. Although not insurmountable, these requirements may involve such things as additional inspections and certifications, taxes and fees. Your local Canadian Dealer is a professional at meeting these requirements.*

Forest River's goal is for all RV Owners to fully enjoy their RV experience. In light of this goal, and considering the advantages of buying local, we encourage you to be thorough when determining what product to purchase and which dealer to purchase it from as both are key to your ultimate satisfaction and the realization of your dreams.



Georgetown

THE ELEGANT ALTERNATIVE^{VE}



320DS

320DS



The Georgetown VE Series is great for weekend campers and full-time campers alike. With 3 great floorplans and five interiors to choose from you are sure to find one that suits your tastes and needs. Engineered for the road and designed for the driver our VE models offer you plenty of storage and all of the amenities at a great price.

Visit your local Georgetown dealer today and see what all the talk is about.

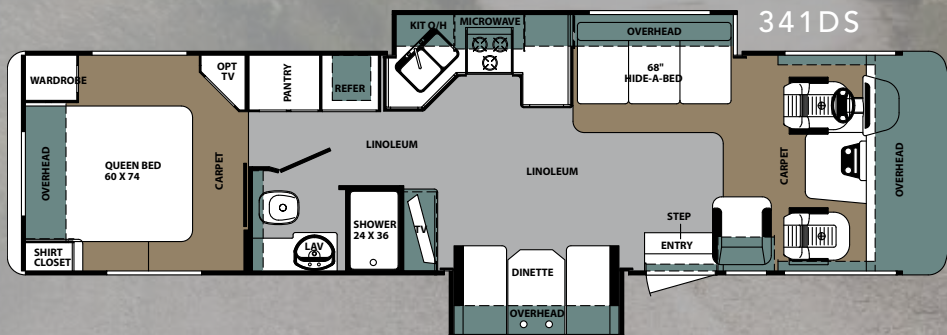
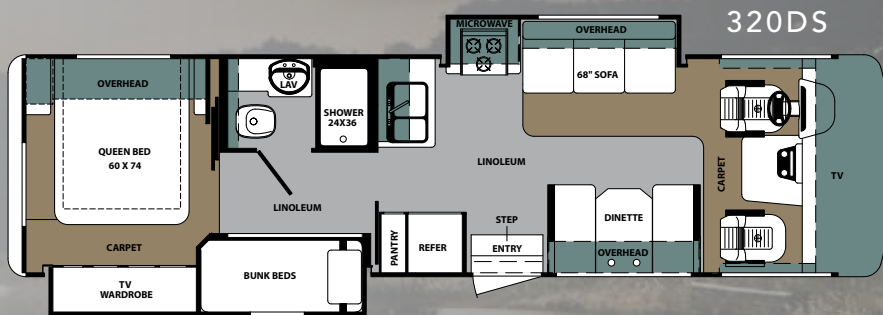
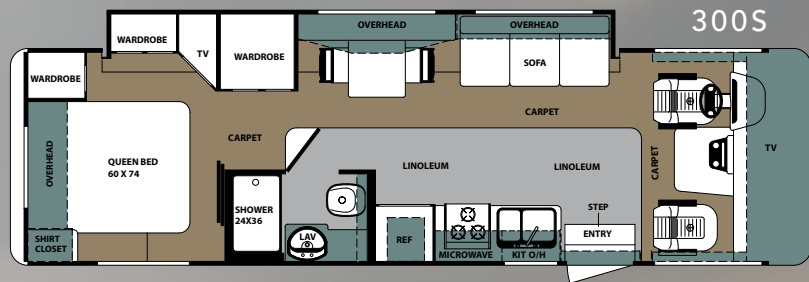
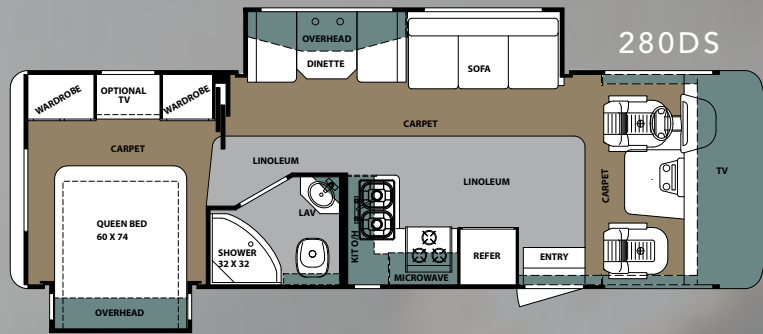
320DS



300S CASHMERE INTERIOR



341DS HAZELNUT INTERIOR



The Super Storage Area has room for everything you need for long and short term stays.



STANDARDS

- DELUXE SOLID SURFACE KITCHEN COUNTERTOPS
- FOG LIGHTS
- 1 PIECE WINDSHIELD FOR PANORAMIC VIEW
- SLIDE OUT AWNINGS
- HUGE REAR STORAGE COMPARTMENT
- 30" ENTRANCE DOOR
- 20,500# CHASSIS
- WATER FILTRATION SYSTEM-FULL COACH
- EASY ACCESS COCKPIT
- FLAT FLOOR THROUGHOUT
- DELUXE DASH
- AM/FM/CD PLAYER
- 3 POINT SEAT BELTS
- DASH FANS
- SOFT TOUCH DRIVER PASSENGER SEATS
- SOFT TOUCH HIDE A BED SOFA (N/A 320)
- DESIGNER LIGHTING PACKAGE
- DAY/NIGHT SHADES
- SLIDE OUT PANTRY
- 32" FEATURE WALL TV (341 ONLY)
- FULL EXTENSION DRAWERS WITH ROLLER BEARING SLIDES
- WOOD TRIM AROUND EXTERIOR DOOR ENTRANCE
- 1 PIECE FIBERGLASS SHOWER
- SOLID POCKET DOOR TO BEDROOM
- TV CABINET IN BEDROOM
- 30" OVER THE RANGE MICROWAVE
- LARGE GLASS DOOR OVEN
- STAINLESS STEEL SINK
- MIRRORED KITCHEN BACKSPLASH
- PULL OUT SPRAYER ON SINGLE LEVER FAUCET
- 5000# HITCH
- SECOND AUXILIARY BATTERY

POPULAR OPTIONS

- GELCOAT SIDE WALLS
- 13.5 A/C REAR WITH 50 AMP SERVICE AND ONAN 5.5 GENERATOR
- A/C HEAT STRIP
- 2nd A/C HEAT STRIP
- POWER PRO ELECTRIC AWNING
- 15.0 ROOF AIR DUCTED (IPO 13.5)
- 50 AMP SVC. WITH ONAN 5.5 GENERATOR
- LINOLEUM IN PLACE OF CARPET
- 19" LCD BEDROOM TV
- CONVECTION MICROWAVE W/OVEN
- CONVECTION MICROWAVE WITH COOKTOP
- ARCTIC PACK WITH ENCLOSED TANKS
- POWER DRIVERS SEAT
- FANTASTIC™ FAN-KITCHEN
- POWER FAN IN BATHROOM
- EURO RECLINER I.P.O. BARREL CHAIR (341 ONLY)
- OUTSIDE SHOWER (N/A 300)
- MIDNIGHT or ESPRESSO FULL BODY EXTERIOR PAINT (INCLUDES GEL COAT OPTION & POWER PRO AWNING)
- PARTIAL PAINT
- DUAL PANE WINDOWS
- DVD PLAYERS IN BUNK HOUSE (320 ONLY)
- HOME THEATER SYSTEM
- AUTOMATIC LEVELING JACKS
- REAR VISION-COLOR (BACK-UP CAMERA)
- REAR VISION COLOR SIDE CAMERA'S
- REMOTE/HEATED DRIVER & PASSENGER MIRRORS

SPECIFICATIONS

MODEL	280DS	300S	320DS	341DS
GCWR (lb.)	26000	26000	26000	26000
GVWR (lb.)	TBD	20500	20500	20500
Wheelbase	178"	190"	208"	208"
Fuel Capacity (gal)	75	75	75	75
Tire Size	245/70R19.5	245/70R19.5	245/70R19.5	245/70R19.5
Interior Height	80"	80"	80"	80"
Interior Width	95 1/2"	95 1/2"	95 1/2"	95 1/2"
Overall Height w/ AC	12' 1"	12' 1"	12' 1"	12' 1"
Overall Length	28' 10"	30' 11"	32' 11"	35' 6"
Overall Width	101"	101"	101"	101"
Exterior Storage (cu. ft.)	TBD	96	96	133
Fresh Water (gal)	50	50	50	50
Black Water (gal)	41	41	41	41
Grey Water (gal)	41	41	41	41
LP Tank (gal)	24	29	29	29
Water Heater (gal)	6	6	6	6
Furnace (btu)	35k	35k	35k	35k
Patio Awning	14'	15'	12'	18'

INTERIOR DECOR OPTIONS

OPULENT GLAZED CHERRY
INTERIOR WOOD

BLACK & TAN



BIRCH



CASHMERE



HAZELNUT



MAHOGANY



TAKE TIME



ENJOY LIFE

Forest River, Inc. 58277 S.R. 19 South Elkhart IN, 46517 Phone: 574.296.7700

Fax: 574.295.8749 www.forestriverinc.com www.forestriveraccessories.com



A BERKSHIRE HATHAWAY COMPANY

All illustrations and specifications contained in this literature are based on the latest product information at time of publication. Forest River reserves the right to make changes in prices, colors, materials, equipment and specifications at anytime without notice and assumes no responsibility for any error in this literature. All units are shipped F.O.B. Goshen, Indiana.
CONSULT YOUR LOCAL DEALER FOR WARRANTY INFORMATION. PHOTOS MAY DEPICT OPTIONAL FEATURES. PIP41808 9/09