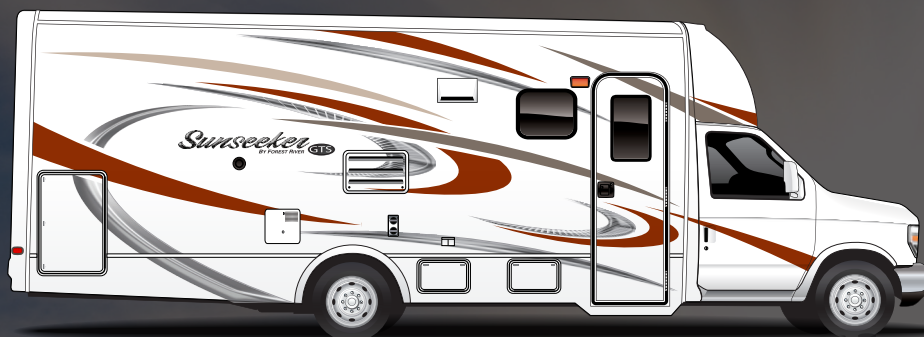


Sunseeker

BY FOREST RIVER

GTS

STANDARD EXTERIOR



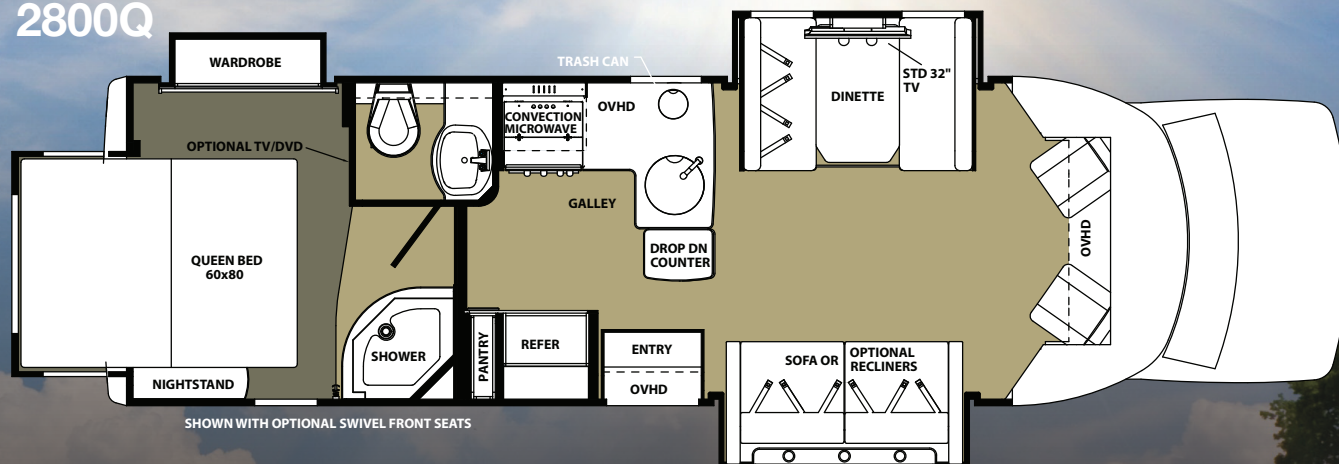
BORDEAUX FULL BODY PAINT



PLATINUM FULL BODY PAINT



2800Q



	FORD CHASSIS
	2800Q
WHEELBASE	212"
GVWR (LBS)	14,500
GAWRR (LBS)	9,600
GAWRF (LBS)	5,000
UVW (LBS)	11,596
GCWR (LBS)	22,000
NCC	2,904
FUEL CAP. (GAL)	55
HITCH RATING (LBS)	7,500
TOTAL LENGTH	30' 4"

	CAPACITIES AND DIMENSIONS
	2800Q
EXTERIOR HEIGHT W/ A/C	10' 8"
EXTERIOR WIDTH	95.5"
INTERIOR WIDTH	90"
INTERIOR HEIGHT	81"/75.5"
FRESH WATER (GAL) W/ WH	49
GREY WATER (GAL)	42
BLACK WATER (GAL)	28
L.P. CAPACITY (GAL)	9.8
AWNING LENGTH	18' 0"
WATER HEATER (GAL)	6
SEAT BELTS	7
EXTERIOR STORAGE (CU. FT.)	73

WARRANTY

12 Months/12,000 mile basic limited warranty	S
3 years/36,000 mile limited chassis warranty	S
5 years/60,000 mile limited powertrain warranty	S
12 Months Coach-Net Roadside Assistance	S

SYSTEMS

Battery disconnect	S
Water heater bypass	S
(2) Deep cycle coach batteries in step-well	S
30 amp service with detachable cord	S
60 amp Progressive Dynamics Converter	S
6 gallon DSI gas/electric water heater	S
30,000 BTU furnace	S
Emergency start switch	S
Satellite/Cable connection	S
13,500 BTU ceiling ducted roof air	S
4.0 KW Onan Microquiet generator	S
Automatic generator transfer switch	S
Firestone Ride-Rite air helper springs	S
Water filtration system	S
Heated, enclosed holding tanks & valves	S
Arctic Package (12V tank heaters)	O
15k BTU air conditioner with heat pump	O
CO2, LP and smoke detector	S
Jack digital antenna	S

EXTERIOR

2" Aluminum framed laminated sidewalls	S
Azdel Superlight composite substrate	S
Gel Coat exterior fiberglass	S
Block foam insulation	S
Power patio awning with LED light strip	S
Slide-out awnings	S
Fiberglass roof	S
One piece fiberglass front cap	S
Stainless steel wheel liners	S
Valve stem extensions	S
Roto-cast storage compartments	S
Fiberglass running boards	S
110 volt, GFI protected exterior receptacle	S
Tinted frameless windows	S
Deluxe exterior mirrors	S
Heated, remote exterior mirrors	O
7,500 lbs tow hitch with 7-pin connector	S
Spare tire	S
Integrated entry step	S
Outside shower	S
Automatic leveling system (4-point)	O
Full body paint	O
Exterior grill with quick connect	O
Black tank flush	O

FREE MEMBERSHIP
to Forest River Owners' Group

www.forestriverfrog.com

STANDARDS & OPTIONS

CAB AREA

7" Touch-screen radio with DVD, USB and Bluetooth	S
Sirius tuner and antenna	S
Cab area privacy curtain	S
Ultra leather driver and passenger seats	O
Power windows and door locks	S
Keyless entry	S
Color back-up monitor in rear view monitor	O
Side view cameras	O
GPS navigation system	S
Swivel driver seat	O
Swivel passenger seat	O
Deluxe woodgrain dash	O

KITCHEN

High-neck faucet	S
Recessed 3-burner range with flush glass cover	S
Range hood with fan and light	S
Oven IPO drawer	O
Convection microwave	S
6 cu ft double door refrigerator	S
Raised wood refrigerator panel	O
Full extension ball bearing drawer guides	S
Flip-up countertop extension	S

BATHROOM

Porcelain toilet	S
Glass shower door	S
Towel bar, tissue, toothbrush and soap holder	S
Electric roof fan	S
Shower head with flexible extension	S
Shower skylight	S

BEDROOM

Innerspring mattress	S
Upgraded memory foam mattress	O
Blackout roller shades	S
Bedroom TV with DVD	O

LIVING ROOM

Dream dinette	S
32" 12V flat panel side TV	S
Surround sound with sub-woofer	O
Child seat head tethers in dinette	S
Fantastic fan in living room	O
LED lighting throughout	S
Dual recliners IPO Sofa	O



PRE-DELIVERY INSPECTION FACILITY

20,000 square feet of quality assurance. The bare essentials for a premium product. This state-of-the-art facility gives immediate daily feedback to production for quality assurance in every unit built.