

ARCADIA

SOFT SHOWER DOOR SYSTEM*

ANOTHER SEA PRODUCT
DESIGNED EXCLUSIVELY
FOR THE RV INDUSTRY

CREATE SPACE WHERE
IT'S NEEDED MOST

AVAILABLE FINISHES:

Platinum

Oil-Rub
Bronze



Features and Benefits

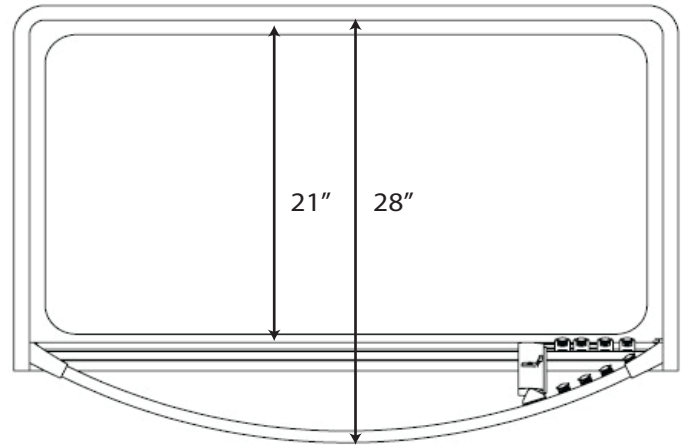
- Adds over 7 inches of shoulder room (33%) to the center of your shower
 - A unique patent pending product with a curved header and straight bottom sill
 - Installation in minutes on traditional straight threshold tubs
 - Full-length magnet strike assures no water outside your shower
 - The translucent Niagara pattern screen is easily replaceable
 - A shower system that operates like a real door
 - No more leak-prone curtains or floppy folding doors
 - Travels in the closed position allowing the translucent screen to dry properly
 - The smooth operating leading edge stile easily negotiates the top and bottom tracks
 - Ultra lightweight - saves as much as 60 lbs. vs. traditional glass doors
 - Provides a substantial egress for those small showers
- * Patent pending



Shower Enclosures America
Ontario, CA 91761
800.536.7324

ARCADIA

SOFT SHOWER DOOR SYSTEM*



Specifications

Aluminum Framing

- a. Unit shall consist of an aluminum extruded Top Header pre-curved to achieve an added 7" in depth to the shower area. Average radius is 33." Parallel tracks allow guiding features for the leading edge stile and the screen hardware components.
- b. Vertical Strike Jamb to include pre-punched installation holes with integrated magnet to receive the leading edge door stile.
- c. Trailing edge wall jamb contains pre-punched installation holes with boss to accept the translucent screen.
- d. Bottom sill to include parallel tracks identical to the Header component.
- e. Leading Edge Stile to contain integrated magnet to receive Vertical Strike Jamb, and boss to accept screen. Shall include 8 ball-bearing rollers (4 bottom, 4 top).
- f. Shall contain 2 each Header Brackets to secure curved header component.

Note - WALL BACKING at bracket position is STRONGLY RECOMMENDED

Shower Screen

- a. Shall consist of .018" thick extruded PVC material.
- b. Niagara glass pattern embossed into the material.
- c. Shall contain anti-microbial additive M01.
- d. Sewn horizontal Polypropylene strips to provide appropriate fold or pleating. Sewn vertical PVC components provide integration to the aluminum frame system.

Sizing

- a. Width - Standard maximum widths shall be: 31 3/4", 35 3/4", 37 3/4", 39 3/4"
- b. Height - Standard heights shall be: 57", 64"

Finishes

Standard finishes include Platinum and Oil-Rub Bronze

* Patent pending

