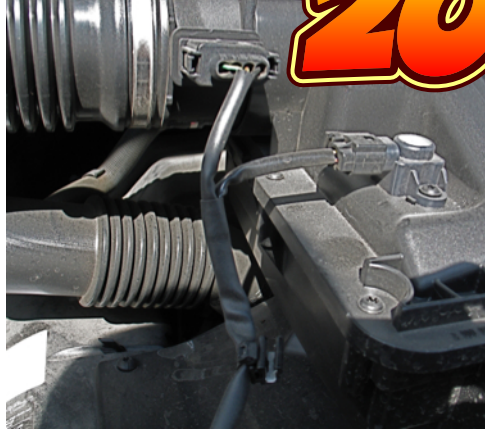


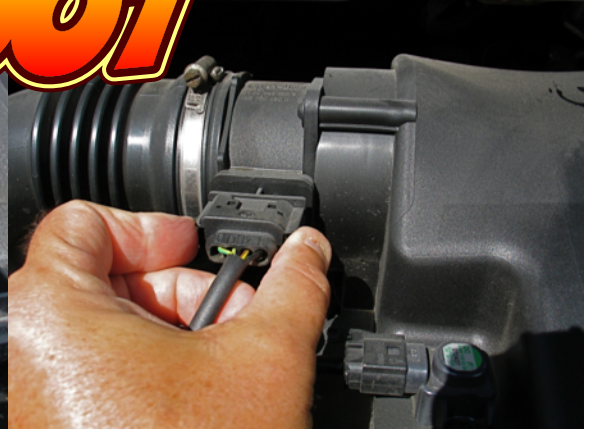
CHANGING A MB FUEL FILTER 2007



HIGH PRESSURE HOSE
CLAMPS NEEDED



SENSOR CABLES DISCONNECTED PUSH
SIDE CLIPS IN. SCREWDRIVER HELP MIGHT
BE NEEDED.



SAME WITH SMALL CONNECTOR...



LOOSEN HOSE CLAMP



AND REMOVE.



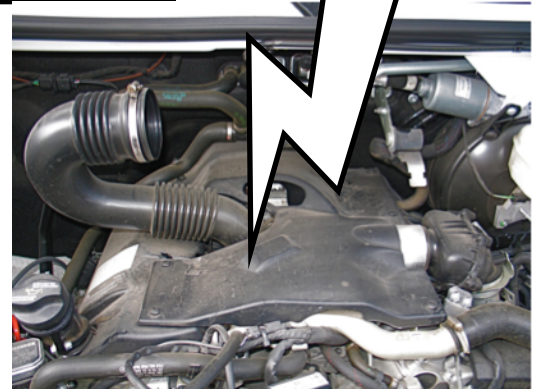
REMOVE RIGHT SIDE INTAKE HOSE. IT'S STIFF



THE VIEW OF THE
COVER PLATE
UNDERNEATH.



LIFT UP ON FRONT
ARMS & PULL
FRONT ON ENTIRE
AIR FILTER
ASSEMBLY. LAY
TO THE SIDE.



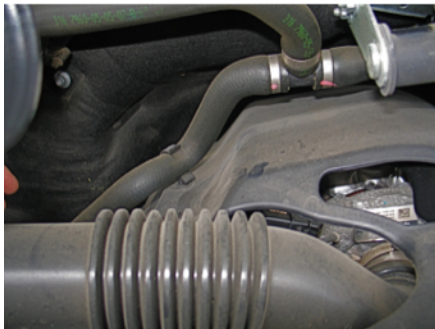
2007 FUEL FILTER PART 2



T 30 TORX DRIVER

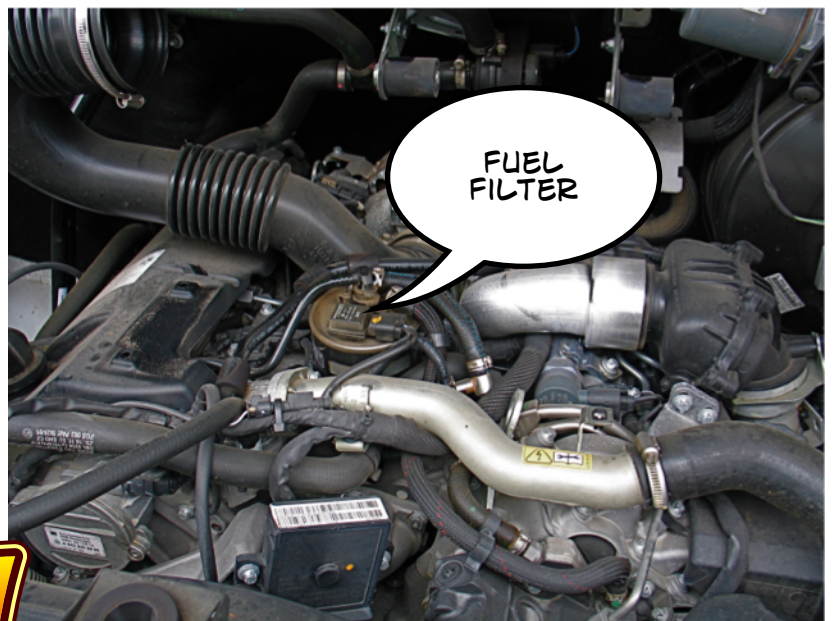


JUST LOOSEN THE SCREWS & LIFT UP.
THE BACK TWO SLIDE FRONT.



DISCONNECT HOSE HOLDER

SLIDE PLATE FRONT & REMOVE



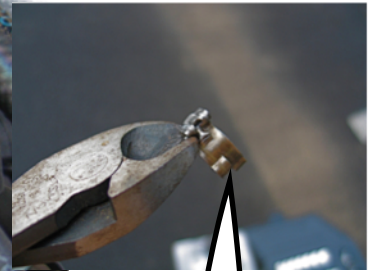
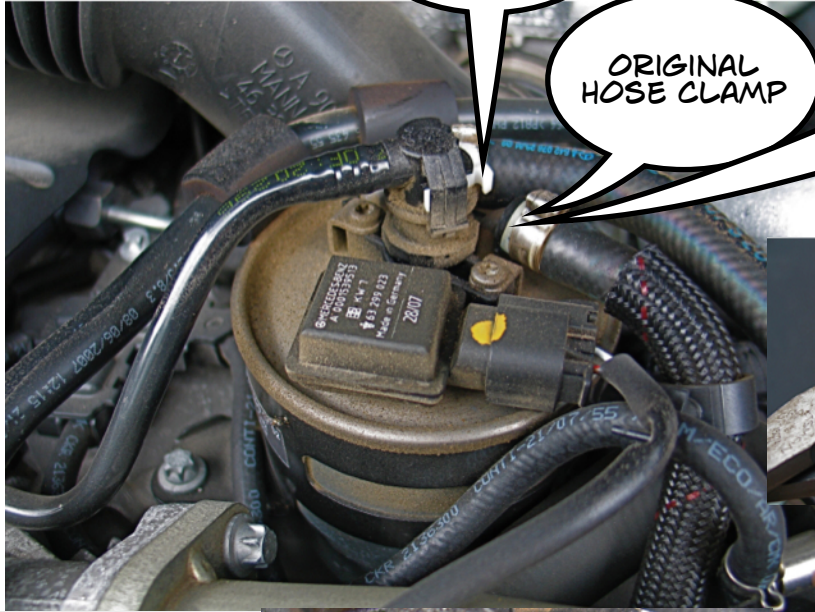
ACCESS!

FUEL FILTER PAGE 3

WHITE CLIP
PUSH IN TO
RELEASE

ORIGINAL
HOSE CLAMP

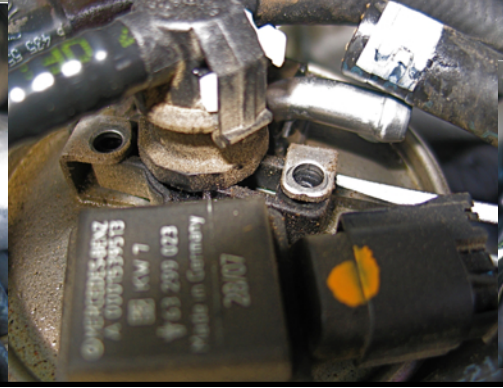
USE DYKE
PLIERS TO
REMOVE



OLD CLIP



20 MM TORX DRIVER TO
REMOVE SCREWS

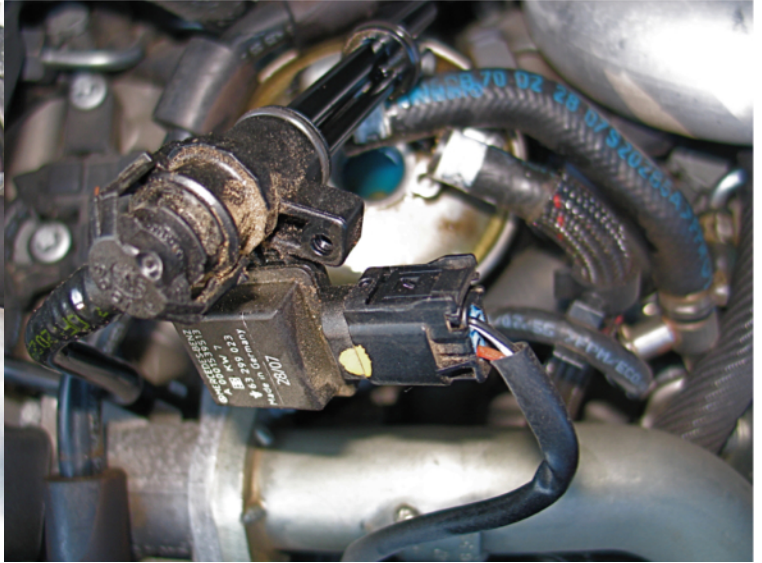


TWIST CLOCKWISE TO REMOVE

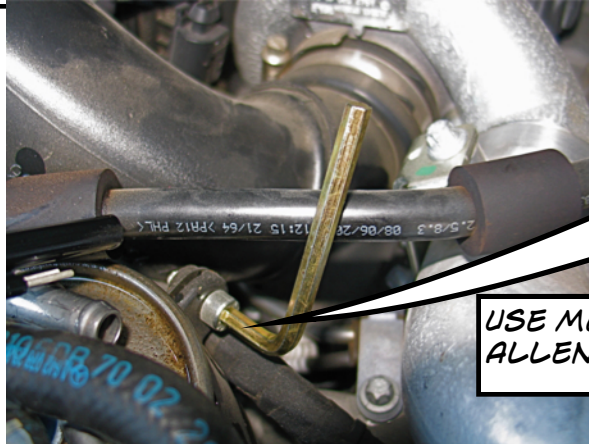


IF THE WHITE CLIPS ALLOW YOU TO REMOVE THE CONNECTOR, DO SO
MINE WOULD NEVER RELEASE SO THIS IS WHAT I DID

PAGE 4



REMOVE HOSES & LIFT WATER SENSOR/DRAIN UP & OUT



LOOSEN
FILTER CLAMP.
DO NOT
REMOVE!

USE METRIC
ALLEN WRENCH.

TO REPLACE, JUST REVERSE!

BILL IN PA