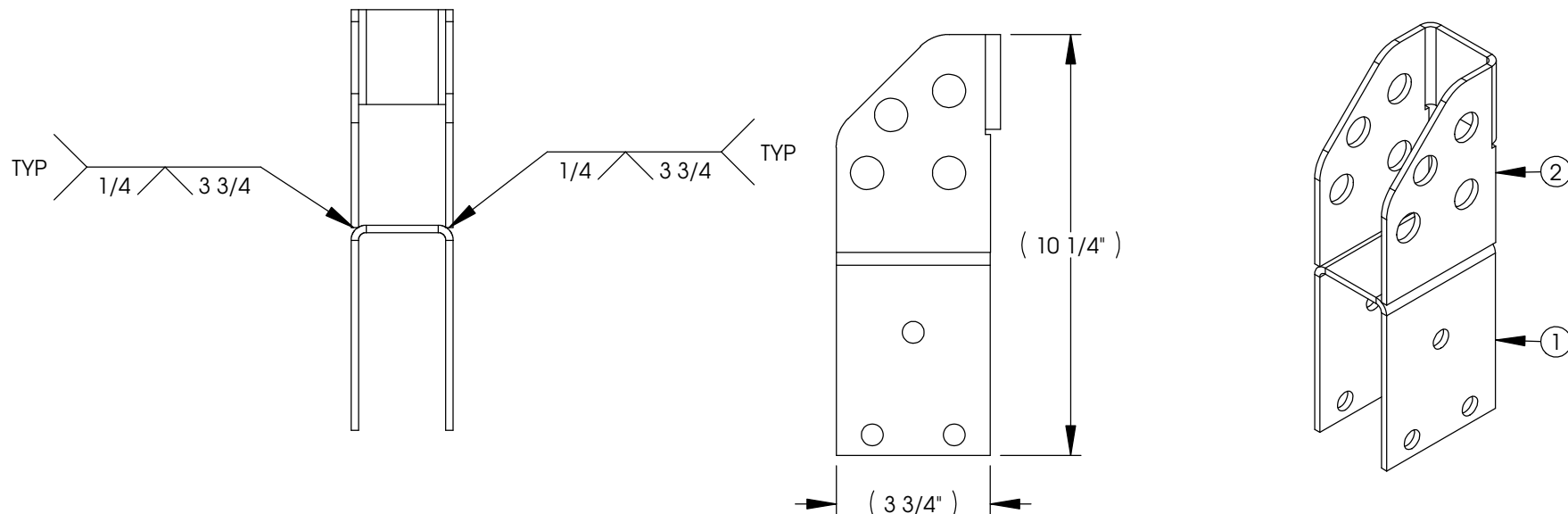



NOTES:

- POWDER COAT BLACK

REVISION HISTORY

REV	DATE	DESCRIPTION	DWR	APVD
A	7/20 /2010	RELEASED TO PRODUCTION	JMF	MG
B	2/13/2014	UPDATED PRINT TO REFLECT THE LATEST CHANGES TO 181928	MTH	
C	10/6/2014	ADDED WELD NOTES	DCR	TG



ITEM	PART NO.	DESCRIPTION	NAME	GA	QTY.
1	181929	3 3/4" X 2 1/2" X 5" X 5"	XMC	7	1
2	181928	5 5/16" X 2 1/2" X 4" X 4"	XMC	7	1
TITLE: BUMPER MT, BIKE RACK PIVOT, WELDMENT					
UNLESS OTHERWISE SPECIFIED ALL DIMENSIONS ARE IN INCHES BREAK SHARP EDGES & DEBURR		TOLERANCES (EXCEPT AS NOTED)	LIPPERT COMPONENTS		
FILLETS R.015		DECIMAL .X ±.1 .XX ±.03 .XXX ±.005	 2703 COLLEGE AVE. GOSHEN, IN 46528		
THIRD ANGLE PROJECTION		FRACTIONAL ±1/16			
		ANGULAR ±1°			
THE INFORMATION CONTAINED IN THIS DRAWING IS THE SOLE PROPERTY OF LIPPERT COMPONENTS, INC. ANY REPRODUCTION IN PART OR AS A WHOLE WITHOUT THE WRITTEN PERMISSION OF LIPPERT COMPONENTS, INC. IS PROHIBITED.			DWG. NO.	SIZE	DATE:
			243632	A	06/03/2010
			ENG. JMF	DWN. JMF	SCALE: 1:4
			SHEET 1	OF 1	REV. C