

Aviator
Touring Edition
by Forest River



WRIGHT FLYER | SAFARI INTERIOR



Your first impression of the view through this stunning panoramic front window will be all the enticing you need to get comfortable around this oversized radius-style dinette. Our plush fabrics and attractive solid surface table deliver a truly residential level of comfort for you and your guests after a day on the golf course or at the lake. Our living area was designed with comfort in mind, and entertainment at hand. Our custom-made Williamsburg hide-a-bed sofa is the perfect place to enjoy your favorite movie.



Our Standard Sony 32" LCD TV, Blu-Ray 5.1 Surround Sound System, and residential LED electric fireplace will be sure to please your senses.



Our master bedroom features a Williamsburg Pillow-top 60x80 queen bed illuminated in the soft glow of dimmer-equipped LED lighting. Our wood-free composite cabinets were designed for maximum storage, with plenty of room for everything from your business suit to your bathing suit.



Feast your eyes on a true culinary treat. Featuring solid surface counter-tops, deep bowl under-mounted sinks, residential sized convection microwave and appliances, and a camper friendly pull-out receptacle and pantry as standard equipment. Delivering convenience and elegance you'll have to see to believe.



The Aviator Lavatory was designed with comfort and ergonomics in mind. Featuring an oversized one-piece shower surround with custom seating, residential sized medicine cabinet and solid surface counters. With 57 gallons of fresh water on hand, and a Suburban quick recovery hot water heater, you'll have plenty of time to soak and relax. Our cabinets, drawers and medicine cabinet are made with wood-free composite material, you'll never have to worry about steam or moisture damage.



Step into Electra's master bedroom and find all your comforts from home, soft pillow top mattress, luxurious window treatments, plush bed appointments, dual reading lights, large panoramic windows and a built in vanity.



Electra's built in vanity and TV provide all you need for the road, plenty of drawer and wardrobe storage let's you bring everything you need. Ready to crawl in bed and watch your favorite television program, our Sony® brand entertainment system has you covered.



Our modern designed kitchen provides the chef in your family all the conveniences of a gourmet kitchen, stainless appliances, solid surface countertops, large double bowl sink with covers gives you the room to prepare any meal.



Whether it's time for dinner or just to sit back and relax, in your Electra you will find plenty of room to feed those hungry campers. Or just sit in front of the fireplace watching your favorite TV program.



Electra's rear bathroom is one of the largest you'll find in any RV, the spacious wardrobe, linen cabinets and porcelain toilet provide you with all the comforts of home.



The large one piece shower with triple sliding door and built in seat round out the Electra's thoughtfully designed bathroom.

AVIATOR | FEATURE BENEFITS



A.



B.



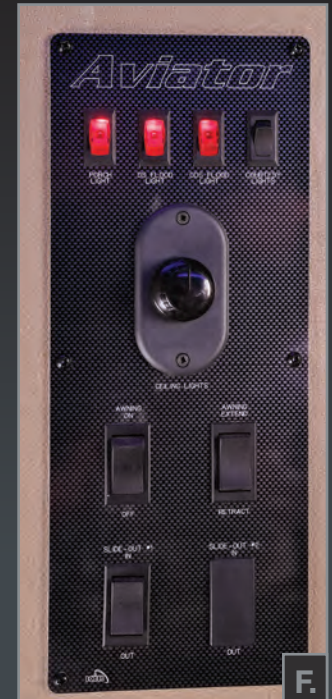
C.



D.



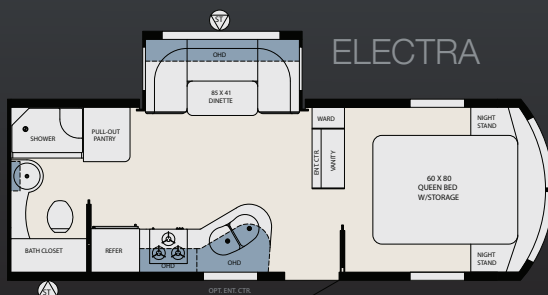
E.



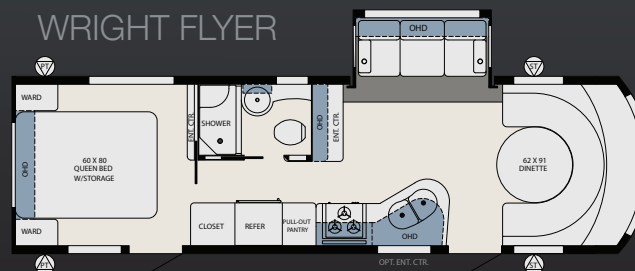
F.

A. Maxxair™ roof vents with electronic wall controls in living room and bedroom provide you the ventilation required to help circulate the air inside your Aviator. **B.** Aviator's optional outside entertainment system lets you enjoy your favorite TV show, sporting event or just listen to your music or CD on the Sony® stereo. **C.** Aviator's central utility center puts all your connections in one convenient location. **D.** Aviator's integrated aerodynamic front lift up door provides you easy access to your batteries and LP tanks with out interrupting airflow while towing. **E.** Features like built in sliding pantry shelves allow you easy access to all your supplies, modern conveniences at hand **F.** Aviator's convenient central control panel puts everything in one location and at your finger tips.

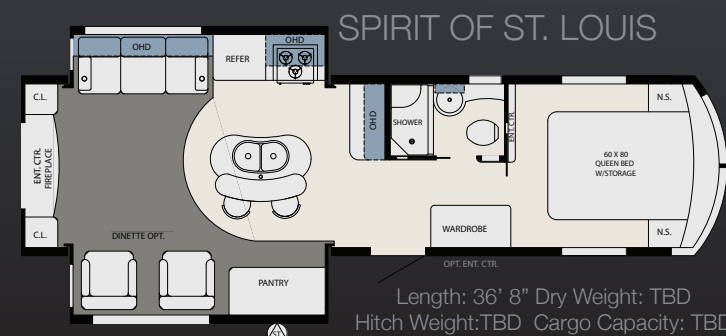
AVIATOR | FLOORPLANS



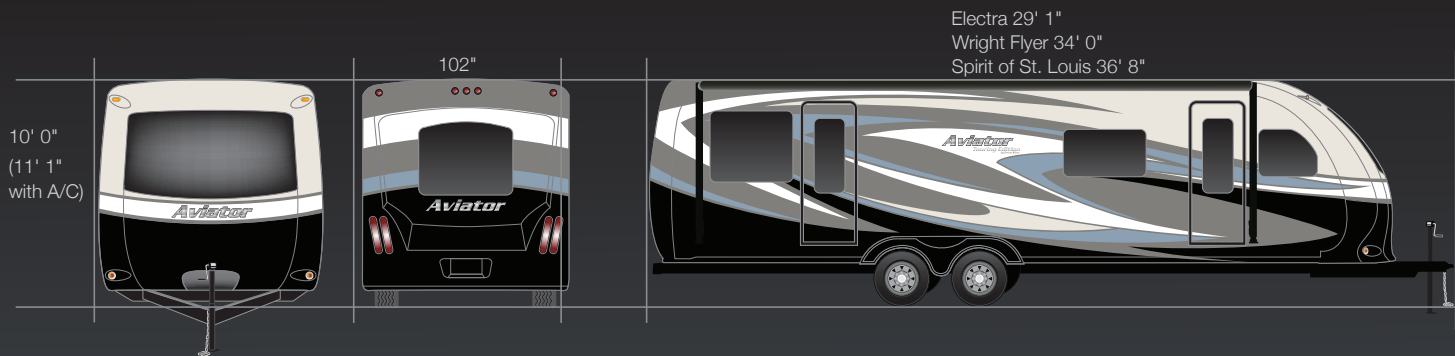
Length: 29' 0" / Dry Weight: 6866
Hitch Weight: 694 / Cargo Capacity: 3988



Length: 34' 0" Dry Weight: 7775
Hitch Weight: 985 Cargo Capacity: 3370



Length: 36' 8" Dry Weight: TBD
Hitch Weight: TBD Cargo Capacity: TBD



Aviator
Touring Edition
 by Forest River

STANDARD KITCHEN FEATURES

- 8 CU. FT. REFRIGERATOR W/ STAINLESS INSERTS
- 1.7 CU. FT. STAINLESS STEEL FRIGIDAIRE® OTR CONVECTION MICROWAVE
- ATWOOD® STAINLESS STEEL COOKTOP W/ SEALED BURNERS
- PULL OUT TRASH CONTAINER
- INTEGRATED SPICE RACKS ON CABINET DOORS
- SOLID SURFACE COUNTERTOP W/ UNDERMOUNT DOUBLE BOWL SINK
- SOLID SURFACE SINK COVERS
- RESIDENTIAL SINGLE LEVER PULLDOWN KITCHEN FAUCET
- LED COURTESY LIGHTING

STANDARD LIVING ROOM FEATURES

- 74" RESIDENTIAL SOFA HIDE-A-BED (SOME MODELS)
- SOLID SURFACE DINETTE TABLE (SOME MODELS)
- HYDRAULIC DINETTE TABLE LIFT SYSTEM (SOME MODELS)
- LED MOOD LIGHTING W/DIMMER SWITCH
- LED CEILING LIGHTS W/DIMMER SWITCH
- LED DIRECTIONAL READING LIGHTS

STANDARD BATHROOM FEATURES

- ONE PIECE FIBERGLASS SHOWER W/BENCH SEATING
- DECORATIVE SLIDING GLASS SHOWER DOOR
- TINTED SKYLIGHT OVER SHOWER
- AQUA-MAGIC™ CERAMIC TOILET
- SOLID SURFACE COUNTERTOP W/ UNDERMOUNT LAVATORY SINK
- MEDICINE CABINET W/MIRROR
- LED CEILING LIGHTS W/DIMMER SWITCH
- DECORATIVE TOILET PAPER HOLDER
- MONITOR CONTROL PANEL

STANDARD BEDROOM FEATURES

- 60" X 80" PILLOWTOP MATTRESS
- LED CEILING LIGHTS W/DIMMER SWITCH
- LED DIRECTIONAL READING LIGHTS
- LED COURTESY LIGHTING

STANDARD EXTERIOR FEATURES

- FULL BODY PAINT WITH CLEAR COAT PROTECTION
- ARMORCOAT™ PROTECTION ON FRONT HOOD
- TWIN 30# LP BOTTLES W/AUTO REGULATOR
- DUAL BATTERY RACK
- LED PATIO LIGHT W/CHROME BEZEL
- LED FLOOD LIGHTS W/CHROME BEZELS
- LED TAIL LIGHTS
- LED LICENSE PLATE LIGHT
- LED STORAGE COMPARTMENT LIGHTS
- REAR FIBERGLASS CAP
- SLAM LATCH BAGGAGE DOORS W/STRUT
- DETACHABLE POWER CORD W/LED SIGNAL LIGHTING
- ONE PIECE FIBERGLASS ROOF

STANDARD INTERIOR FEATURES

- DIGITAL WALL THERMOSTAT
- SUBURBAN™ 30,000 BTU FURNACE
- SUBURBAN™ 10 GAL. GAS/ELEC DSI "QUICK RECOVERY" WATER HEATER
- WATER FILTRATION SYSTEM
- SOFT TOUCH CEILING
- ALUMINUM SKINNED CABINET DOORS W/ RECESSED HIDDEN HINGES
- FULL EXTENSION BALL-BEARING DRAWER GUIDES W/DEEP DRAWERS
- DECORATIVE DAY/NIGHT SHADES
- SHAW® R2X STAIN AND SOIL RESISTANT CARPETING
- DESIGNER CAREFREE® LINOLEUM FLOORING
- ALUMINUM FRAMED DINETTE BASE
- 57 GAL. FRESH WATER TANK CAPACITY
- 47 GAL. GRAY TANK CAPACITY
- 47 GAL. BLACK TANK CAPACITY

FIRST CLASS PACKAGE (STD.)

- CAREFREE ELECTRIC BOX AWNING WITH WIND SENSOR
- BONDED TINTED SAFETY GLASS WINDOWS
- ALUMINUM SPILT SPOKE RIMS
- FIBERGLASS ROCKER PANELS AND WHEEL SKIRTS

- SEWER HOSE MANAGEMENT SYSTEM
- THERMA HEAT ELECTRIC FIREPLACE
- SONY 1000 WATT BLURAY 5.1 HOME THEATER SYSTEM
- MAXXAIR VENT IN BATHROOM W/ ELECTRONIC WALL CONTROL
- PULL OUT PANTRY W/ 8 BASKETS

TOURING EDITION PACKAGE (OPT.)

- MAXXAIR ROOF VENTS W/ WALL CONTROL LIVING ROOM AND BEDROOM
- 15K BTU AIR CONDITIONER
- SLIDE OUT AWNING TOPPER
- BLUE LED MOOD LIGHTING IN LIVING ROOM AND BEDROOM (DIMMER)
- ELECTRIC STABILIZER JACKS
- POWER TONGUE JACK
- SONY 32" HD LCD TV IN BEDROOM

ADDITIONAL OPTIONS

- MAXXAIR ROOF VENTS W/ WALL CONTROL LIVING ROOM AND BEDROOM (TE)
- 15K BTU AIR CONDITIONER (TE)
- BONDED THERMO-PANE TINTED SAFETY GLASS WINDOWS
- ULTRA HEAT TANK HEATERS
- SLIDE OUT AWNING TOPPER (TE)
- BLUE LED MOOD LIGHTING IN LIVING ROOM AND BEDROOM (DIMMER) (TE)
- SONY 32" HD LCD TV - BEDROOM (TE)
- SONY 32" HD LCD TV - OUTSIDE ENTERTAINMENT CENTER
- OUTSIDE ENT. CENTER W/ SONY 12V CD/DVD/ VCD/SACD STEREO W 2 SPEAKERS
- MAIN ENTRANCE DOOR W/ KEYPAD AND LED MOTION SENSOR LIGHT
- SONY TABLET W/ 16GB SD CARD AND WIRELESS ROUTER
- ELECTRIC STABILIZER JACKS (TE)
- POWER TONGUE JACK (TE)
- PREMIUM PAINT PACKAGE

EXTERIOR OPTIONS



PREMIUM PAINT



CLASSIC PAINT



PRE-DELIVERY INSPECTION FACILITY

20,000 square feet of quality assurance. The bare essentials for a premium product. This state-of-the-art facility gives immediate daily feedback to production for quality assurance in every unit built.



Forest River, Inc. encourages our customers to purchase their Forest River products from a local dealership whenever possible for the following reasons:

It is the goal of Forest River, Inc. that all of our RV owners fully enjoy the RV experience and that customer satisfaction meets or exceeds their expectations!

- 1) Forest River, Inc. dealers are independently owned and operated businesses so priority service and scheduling is at their discretion and is often provided to customers that purchased their unit at that dealership.
- 2) Purchasing locally allows customers to establish meaningful relationships with a dealer, enhancing the RV experience through assistance with product questions, user tips or RV regulations for your state or country, and much more!
- 3) Canadian customers must meet requirements to bring an RV purchased out of the country to their home. These requirements may involve additional inspections and certifications, taxes and fees. Your local Canadian Dealer is a professional at meeting these requirements.
- 4) Scheduling timely warranty repairs and adjustments through a local dealership provides far greater flexibility and convenience to you, the customer!

24/7 EMERGENCY ROADSIDE ASSISTANCE

For a worry-free ownership experience

Forest River includes one year of Coach-Net RV Technical & Roadside Assistance with each RV purchase. Whether new to the RV lifestyle or an experienced RV enthusiast, Forest River owners have 24/7 access to technical, operational and emergency road service coverage throughout the US & Canada. Coach-Net's fast, dependable service is just a phone call away.

Coach-Net®

RV Technical & Roadside Assistance

Aviator
Touring Edition
by Forest River



Learn More

Scan this barcode using a QR Reader on your smart phone to learn more about Forest River.



A Berkshire Hathaway company.

Forest River, Inc.
2405 Century Dr.
Goshen, IN 46528
(574) 642-3119
www.forestriverinc.com/aviator
www.forestriveraccessories.com

FREE MEMBERSHIP
to Forest River Owners' Group

www.forestriverfrog.com

