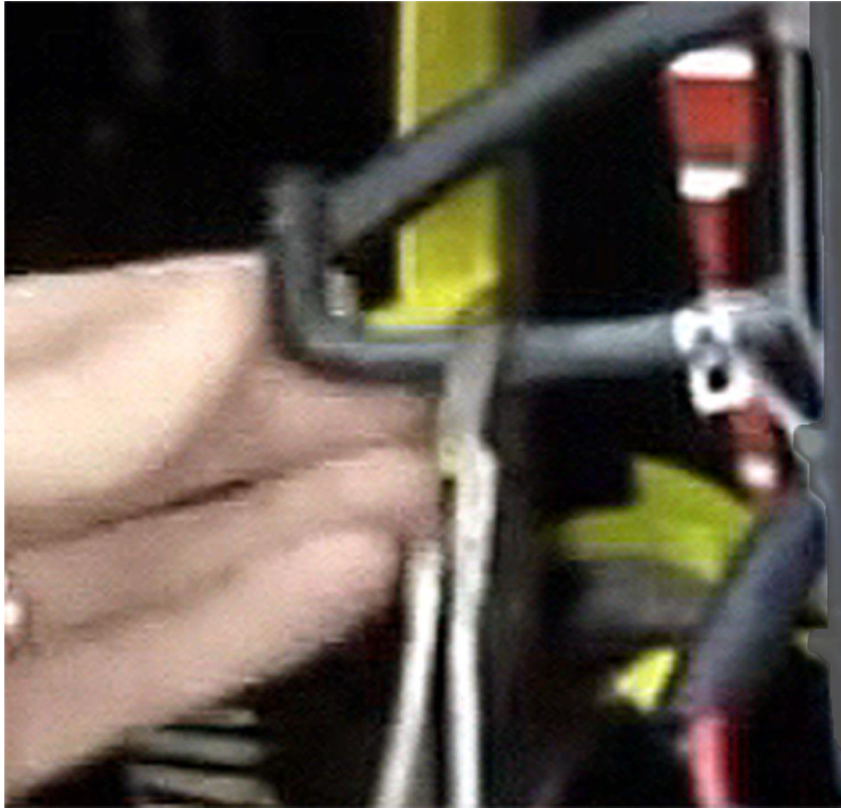
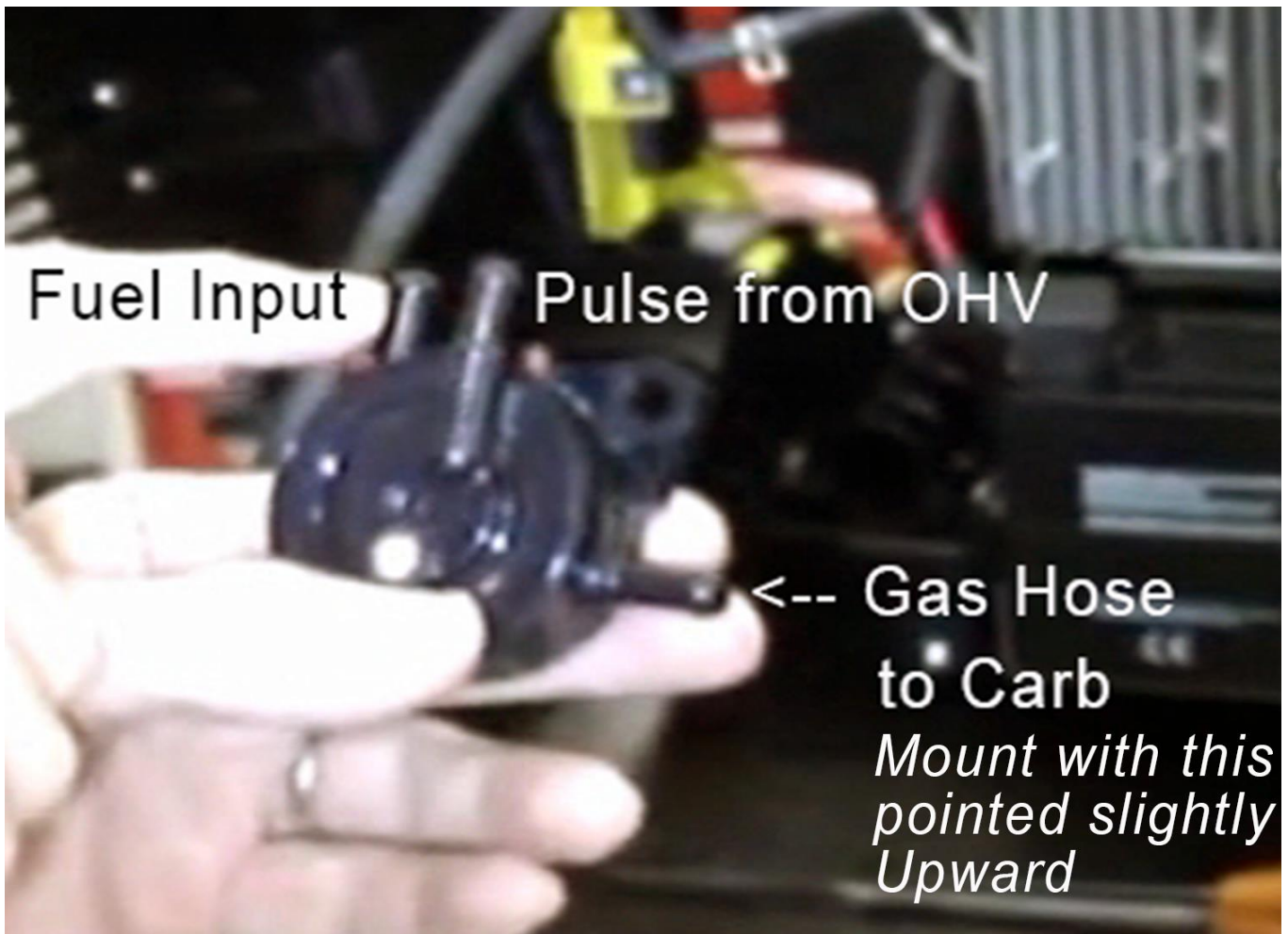


Fuel Tank Selector setting should be:
Off = External On = Onboard Builtin





This is the end of original hose that was connected to the Fuel Selector switch. Cut the angled end and attach to new Fuel Pump's Gas Out to Carb leg.

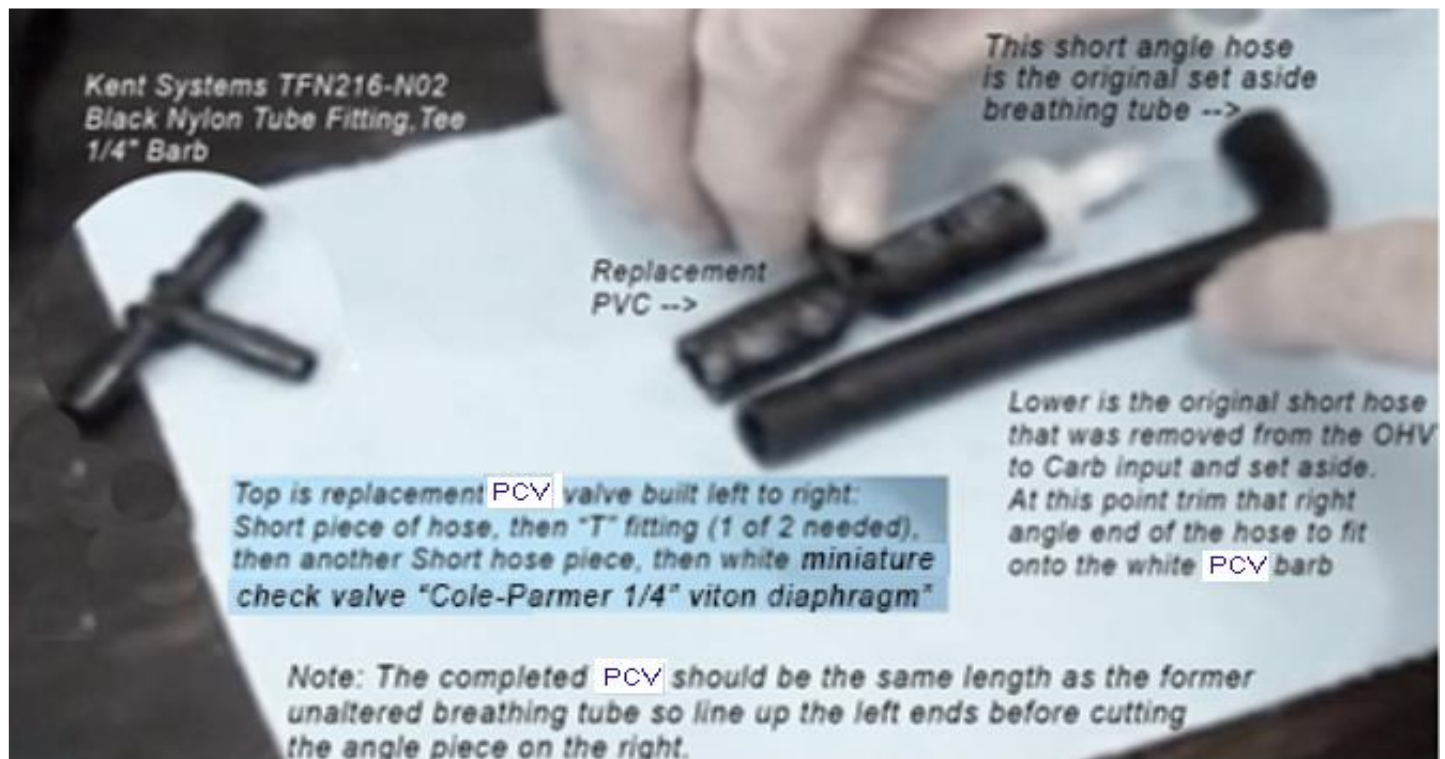


Fuel Input

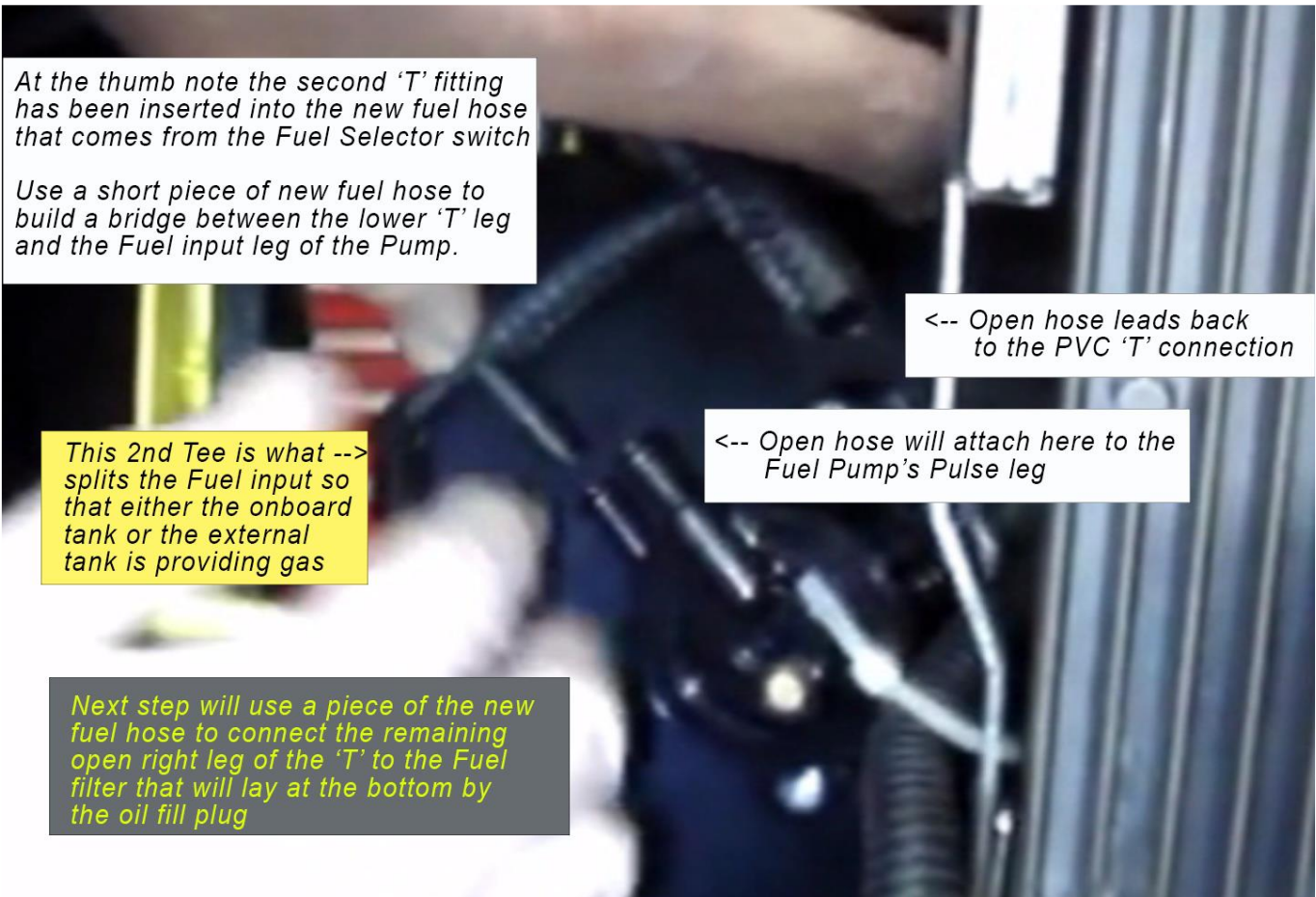
Pulse from OHV

<-- Gas Hose
to Carb

*Mount with this
pointed slightly
Upward*



Note: Cole-Palmer 1/4" check valve (white piece to right of thumb) is a 1-way valve. In the picture its the end open pointing right towards the breather tube. Blow on it before mounting to make sure air comes out toward angle tube.



At the thumb note the second 'T' fitting has been inserted into the new fuel hose that comes from the Fuel Selector switch

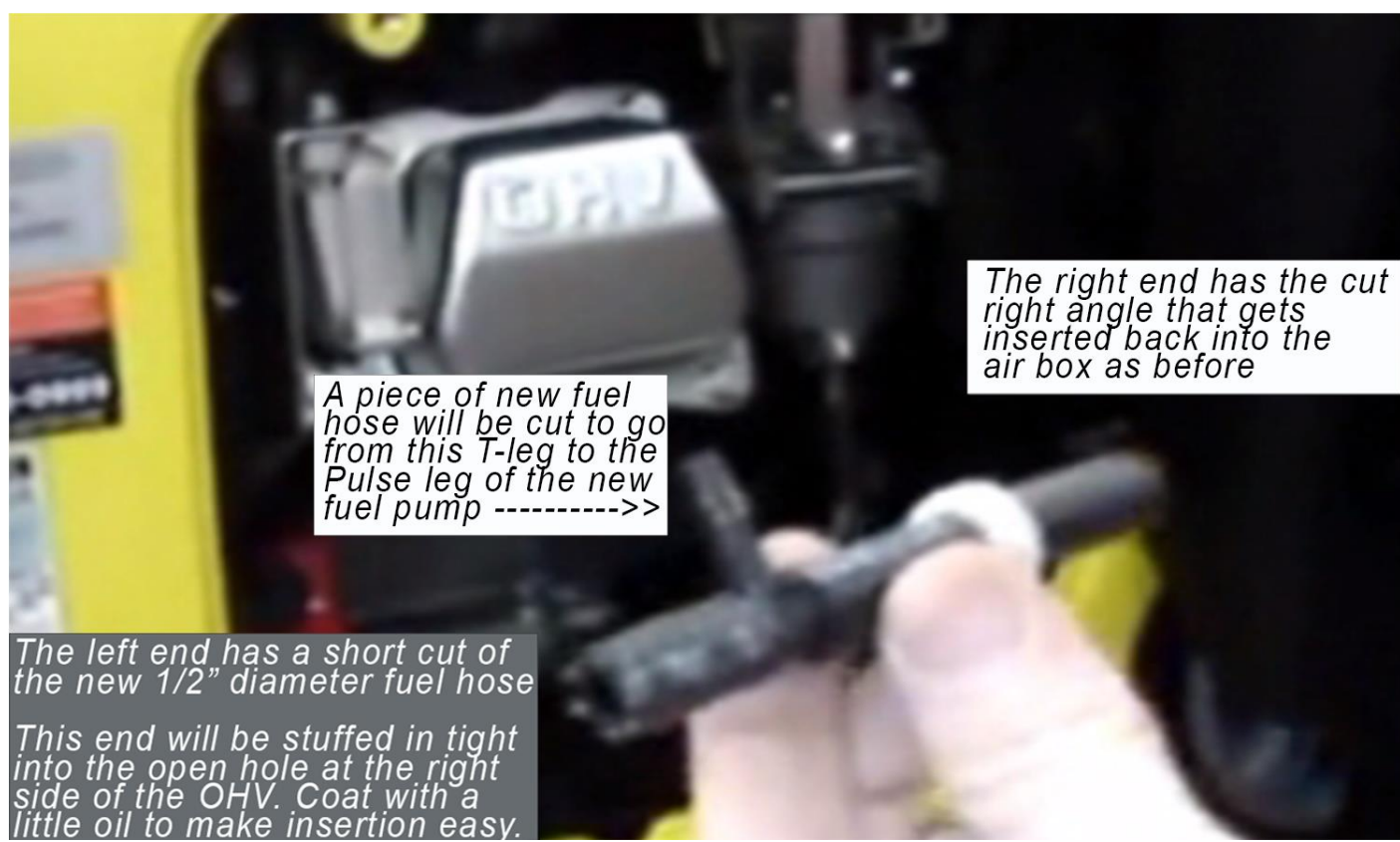
Use a short piece of new fuel hose to build a bridge between the lower 'T' leg and the Fuel input leg of the Pump.

<-- Open hose leads back to the PVC 'T' connection

This 2nd Tee is what --> splits the Fuel input so that either the onboard tank or the external tank is providing gas

<-- Open hose will attach here to the Fuel Pump's Pulse leg

Next step will use a piece of the new fuel hose to connect the remaining open right leg of the 'T' to the Fuel filter that will lay at the bottom by the oil fill plug

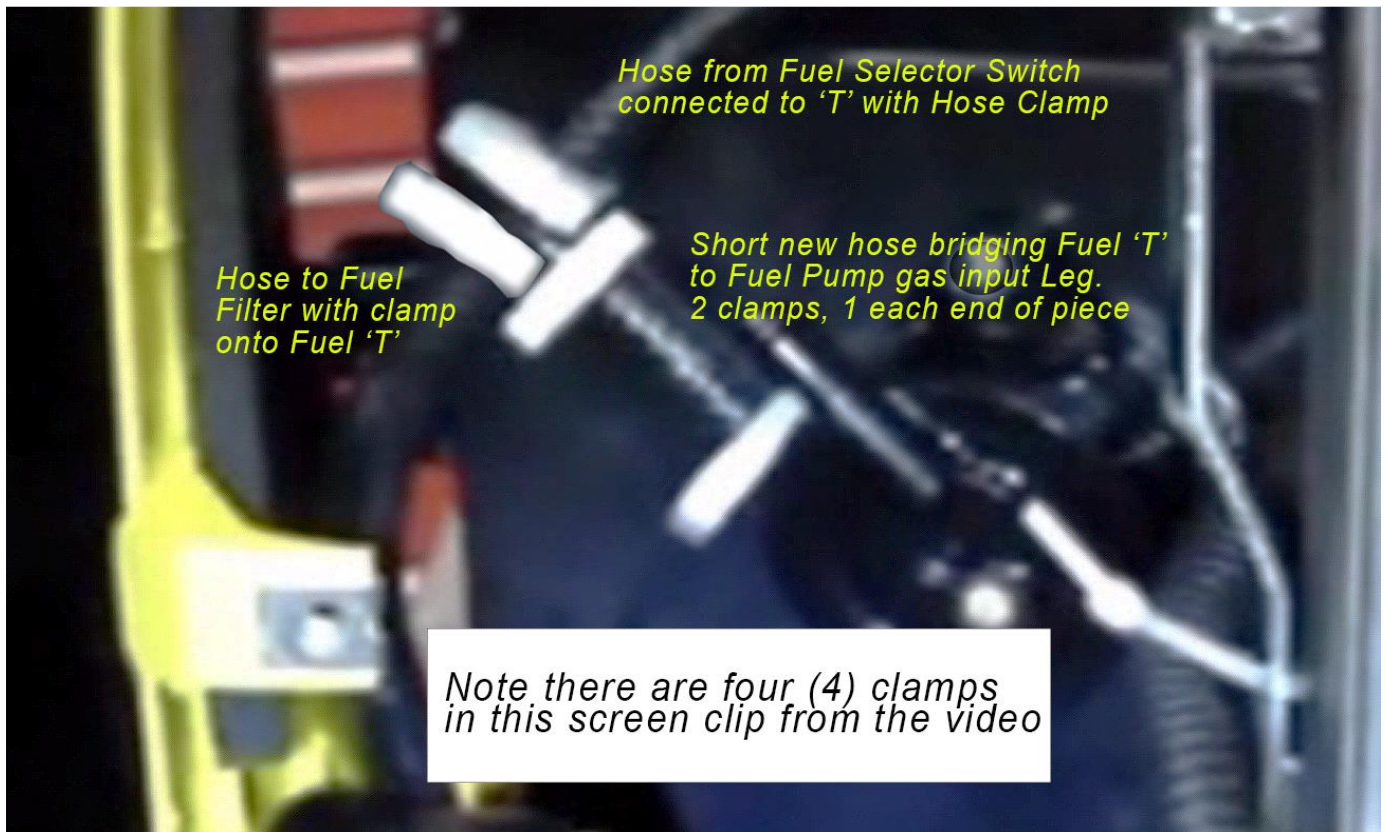


The right end has the cut right angle that gets inserted back into the air box as before

A piece of new fuel hose will be cut to go from this T-leg to the Pulse leg of the new fuel pump ----->>

The left end has a short cut of the new 1/2" diameter fuel hose

This end will be stuffed in tight into the open hole at the right side of the OHV. Coat with a little oil to make insertion easy.



The Top hose connects the case mounted Brass Hose connector/Attwood Quick Connect. The off camera end is onto the barb of the Brass connect that is reachable on the inside of the Champion. The Fuel Filter end is connected to the Input side of the filter and secured with a clamp.



The lower hose connects the Fuel Filter Output end (right here) to a section of Fuel hose that connects to the Fuel 'T' connector that leads to the Fuel Pump and Fuel Selector switch. Note Fuel Filter has 2 clamps.

Attwood Quick Connect to the right, Brass barb connect to the left. The Attwood male side screws into the Brass barb female nut. Use teflon on the Attwood screw threads careful to not allow tape to cross over the opening (see video). Attwood side mounts outside Inverter cover and Brass Barb mounts on inside of cover.

