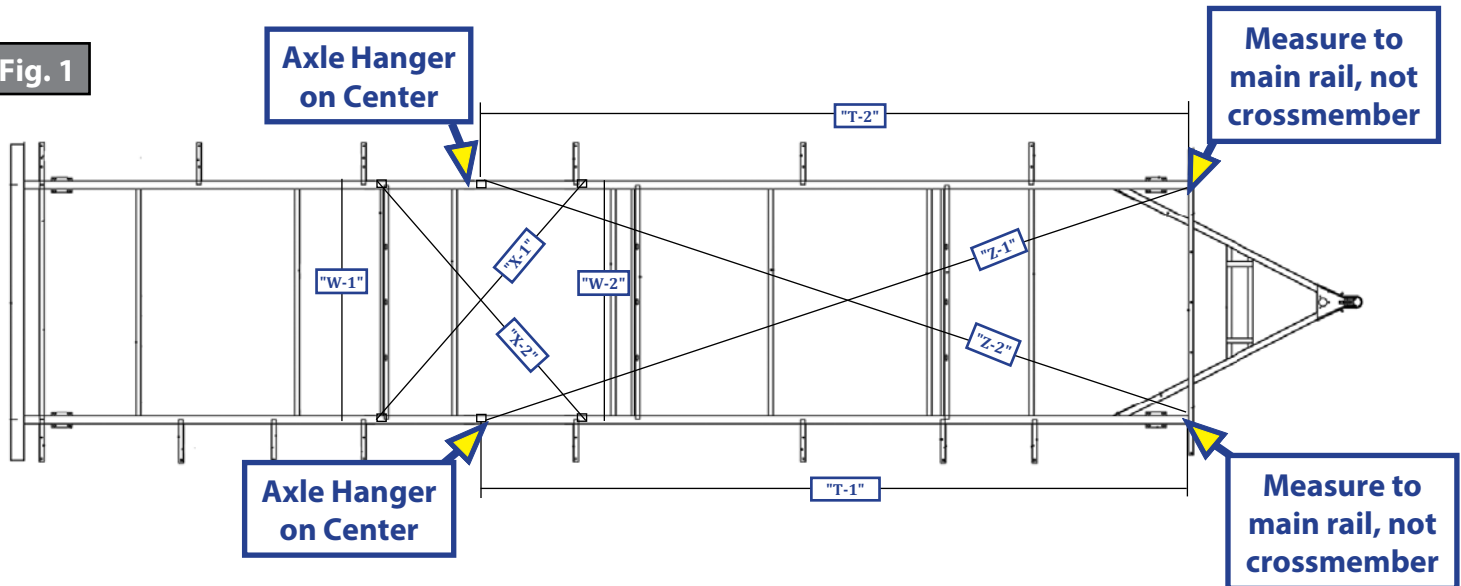


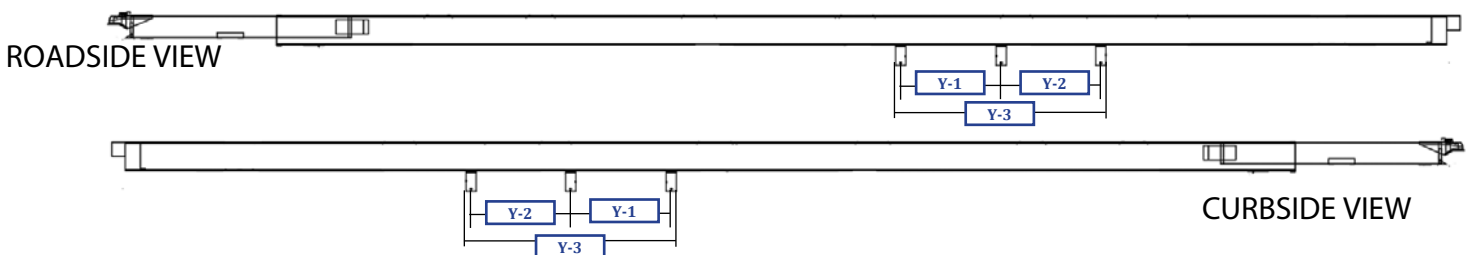
FRAMES AND CHASSIS

Fig. 1



	Measurement
T-1	
T-2	
W-1	
W-2	
X-1	
X-2	
Z-1	
Z-2	

Fig. 2



Curbside	Measurement
Y-1	
Y-2	
Y-3	

Roadside	Measurement
Y-1	
Y-2	
Y-3	

FRAMES AND CHASSIS

Fig. 3

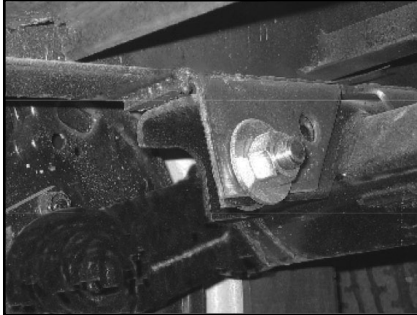


Fig. 4

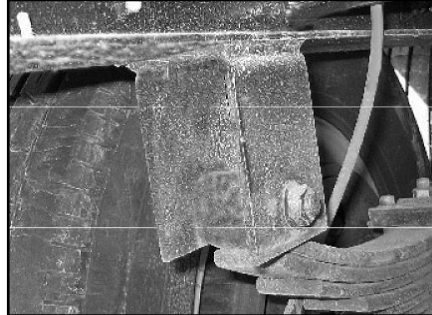
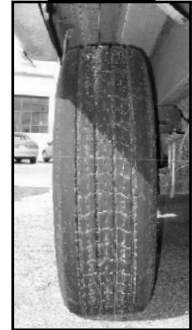


Fig. 5



1. Unit must be pulled into work space straight and evenly.
 2. When measuring axle hanger, measure where hanger meets I-beam (Fig. 3 and 4).
- NOTE:** Be sure to measure as high on the hanger as possible if other components interfere with measurement point on the hanger.
3. On measurements W-1 and W-2, (Fig. 1) be sure to measure top of hanger.
 4. When measuring X-1 and X-2, (Fig. 1) be sure to measure from the top of the hanger on both ends.
 5. Measure T-1 and T-2 (Fig. 1) from center of axle hanger to intersection of main rail and front crossmember.
 6. On measurements Z-1 and Z-2, (Fig. 1) be sure to measure top of hanger and bottom main rail.
 7. Measure Y-1 and Y-2 (Fig. 2) on center of bolt.
 8. Measure Y-3 (Fig. 2) outside of front hanger to outside of rear hanger.

NOTE: Please accompany this document with clear pictures of all points of issue. Be sure tire wear pictures are shot straight on (Fig. 5).