



**SOLERA® POWER AWNING  
OWNER'S MANUAL**

**L I P P E R T**  
**C O M P O N E N T S®**

# TABLE OF CONTENTS

<b>System Information</b>	<b>2</b>
<b>Operation</b>	<b>3</b>
Extending the Awning	3
Retracting the Awning	3
Adjusting Pitch - All Solera Awnings	4
<b>Maintenance - All Solera Awnings</b>	<b>4</b>
Fabric Care	4
<b>Troubleshooting</b>	<b>5</b>
Manual Override	5
<b>Solera Power Awning Assembly</b>	<b>6</b>
<b>Solera Power Awning Components</b>	<b>7-14</b>
<b>Notes</b>	<b>15</b>

## System Information

The Solera® Power Awning features an internal motor to steadily operate the awning. Additionally, the friction joint allows for rain dump and adjustable pitch features, and there is no rafter arm to lock in place. The friction joint also provides added stability.

### CAUTION

**This manual provides operational procedures for Solera® Power Awning. Operating the Solera® Power Awning in any other manner than described may result in personal injury, damage to the recreational vehicle or the awning assembly as well as voiding the Lippert Components Limited Warranty.**

## Operation

**NOTE:** Some coaches may not use the LCI switch (Fig. 3).

### Extending the Awning

1. Verify the RV battery is fully charged and connected to the electrical system.
2. Locate the locking latch (Fig. 1), if equipped, and unlock the latch (Fig. 2).

**NOTE:** This latch is optional and may or may not be installed on one or both support arms.

3. Press and hold EXTEND (Fig. 3A) until the awning is extended completely.

**NOTE:** Extension is considered complete when the fabric is completely unrolled, the valance seam is visible and a section of the roll tube is exposed (Fig. 4).

**NOTE:** The awning fabric should always be above the roll tube. However, if the extend switch is engaged too long or extend is hit inadvertently instead of retract, the awning will roll up backward. This is not a defect. To correct the fabric orientation, press the **RETRACT** button. The awning will then extend to its correct orientation and normal operation can resume.

### ⚠ CAUTION

**Tying down the roll tube once the awning is extended will not allow the free-floating support arms to work as designed and may cause damage to the awning or RV.**

### Retracting the Awning

1. Verify the coach battery is fully charged and connected to the electrical system.

**NOTE:** The awning can be retracted without resetting the pitch.

2. Press and hold RETRACT (Fig. 3B) until the awning is retracted completely.
3. Locate the locking latch (Fig. 2), if equipped, and lock the latch (Fig. 1).

**NOTE:** This latch is optional and may or may not be installed on one or both support arms.

Fig. 1



Fig. 2



Fig. 3

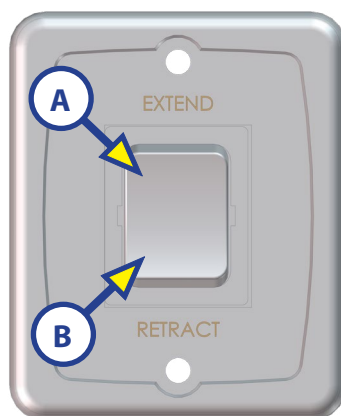
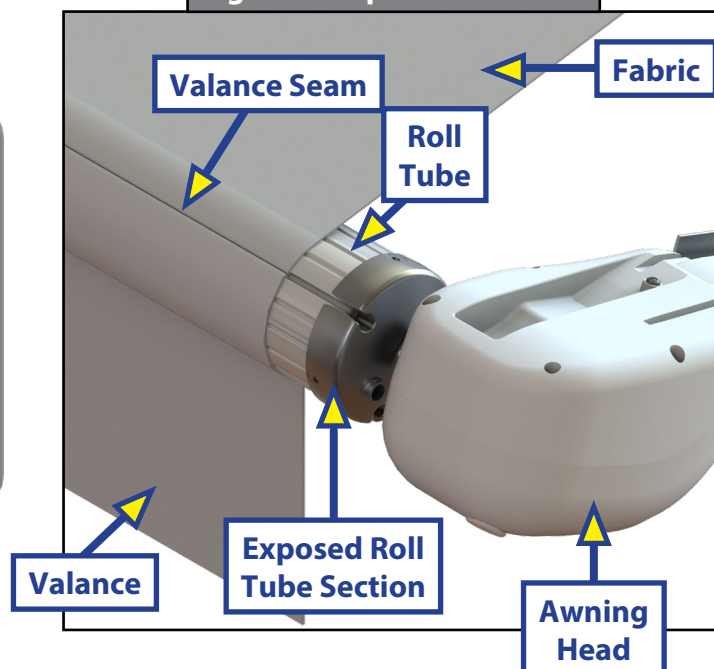


Fig. 4 - Complete Extension



## Adjusting Pitch - All Solera Awnings

**NOTE:** The awning will pitch itself to purge the pooling of excess water and may dump a significant amount of water without notice.

1. Pitch can be set by adjusting the articulating arm to tip one side of the awning to allow water runoff.
2. Extend the awning to desired position.
3. Choose the side of the awning for optimum shade or convenient water runoff. Pull downward on the joint of the articulating arm until desired pitch is set (Fig. 5) to allow for water runoff. Do not push the joints of the articulating arms up. This will put tension on the gas strut, which can cause the strut to break. Belleville washers and bolt (Fig. 6A) allow the joint to remain in the position set by the operator.

**NOTE:** The awning can be retracted without resetting the pitch.

**NOTE:** If the articulating arm does not hold position, it can be tightened by adjusting the bolt (Fig. 6A) in the center of the articulating arm.

Fig. 5

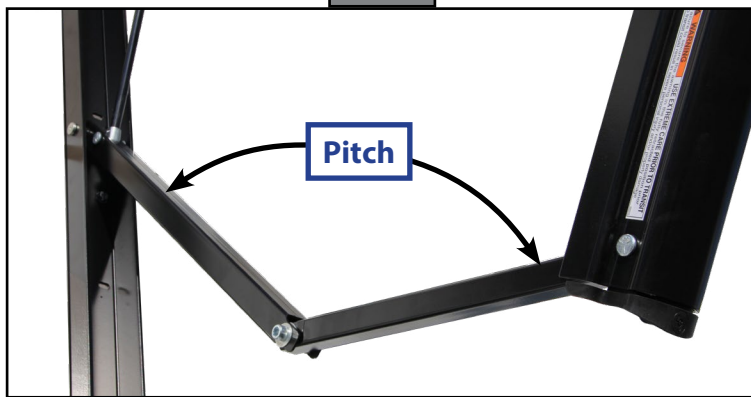
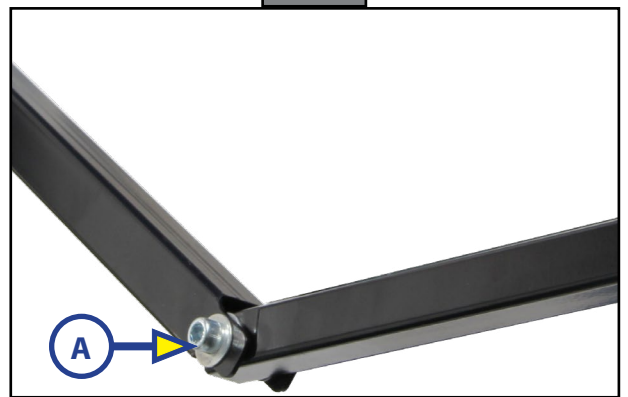


Fig. 6



## Maintenance - All Solera Awnings

### Fabric Care

If the awning is rolled up while wet, roll it out and let it dry as soon as conditions allow before rolling it up again. This will help prevent the formation of mildew and add greatly to the life of the awning. Mildew does not form on the fabric itself, but on the accumulated dust, dirt and grime.

**NOTE:** Periodically clean vinyl or woven acrylic fabric using a mixture of  $\frac{1}{4}$  cup of dish soap and 5 gallons of warm water. Liberally slosh the mixture on the top of the fabric and roll up the awning for 5 minutes. This will apply the mixture to the bottom of the fabric as well. Roll the awning back out and hose off with fresh water. Repeat if necessary. Allow to dry before rolling up.

# Troubleshooting

## Manual Override

In the event of power loss or motor failure, the awning can be extended and retracted manually. Perform the following procedure to manually retract the awning.

**NOTE:** This procedure may also be performed to extend or retract the awning in the event of dry camping or camping without a battery.

1. Remove the rubber grommet (Fig. 7A) from the drive head assembly, exposing the manual override nut on the motor.

**NOTE:** The drive head assembly is always located on the right side of the awning as it is viewed from outside of the coach.

2. Using a  $\frac{7}{16}$ " socket and cordless/power drill, spin the manual override nut counterclockwise to retract the awning (Fig. 8).

**NOTE:** A ratchet may also be used to turn the manual override nut. Using a ratchet will take a significant amount of time and should only be used if no cordless/power drill is available.

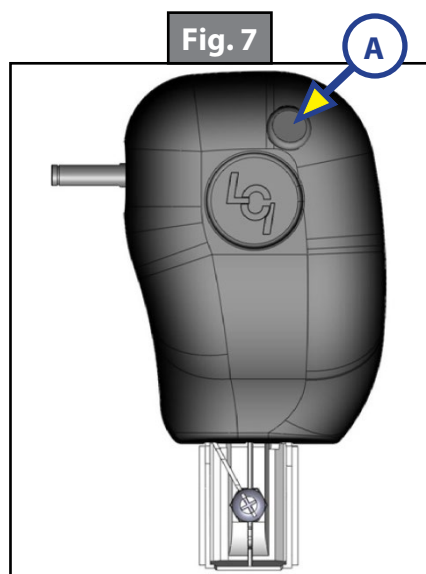
**NOTE:** Use caution when retracting the awning manually. The use of a step stool or ladder may be required to completely retract the awning.

3. When the awning is completely retracted, remove socket or drive device and replace the rubber grommet in the drive head assembly.

**NOTE:** The motor's internal drive system prevents the awning from moving (extend or retract) on its own. If the motor is damaged or disabled, be sure to secure the awning in the retracted position with a strap around both the outer support arm and the mounted support arm before the manual override nut is released.

### CAUTION

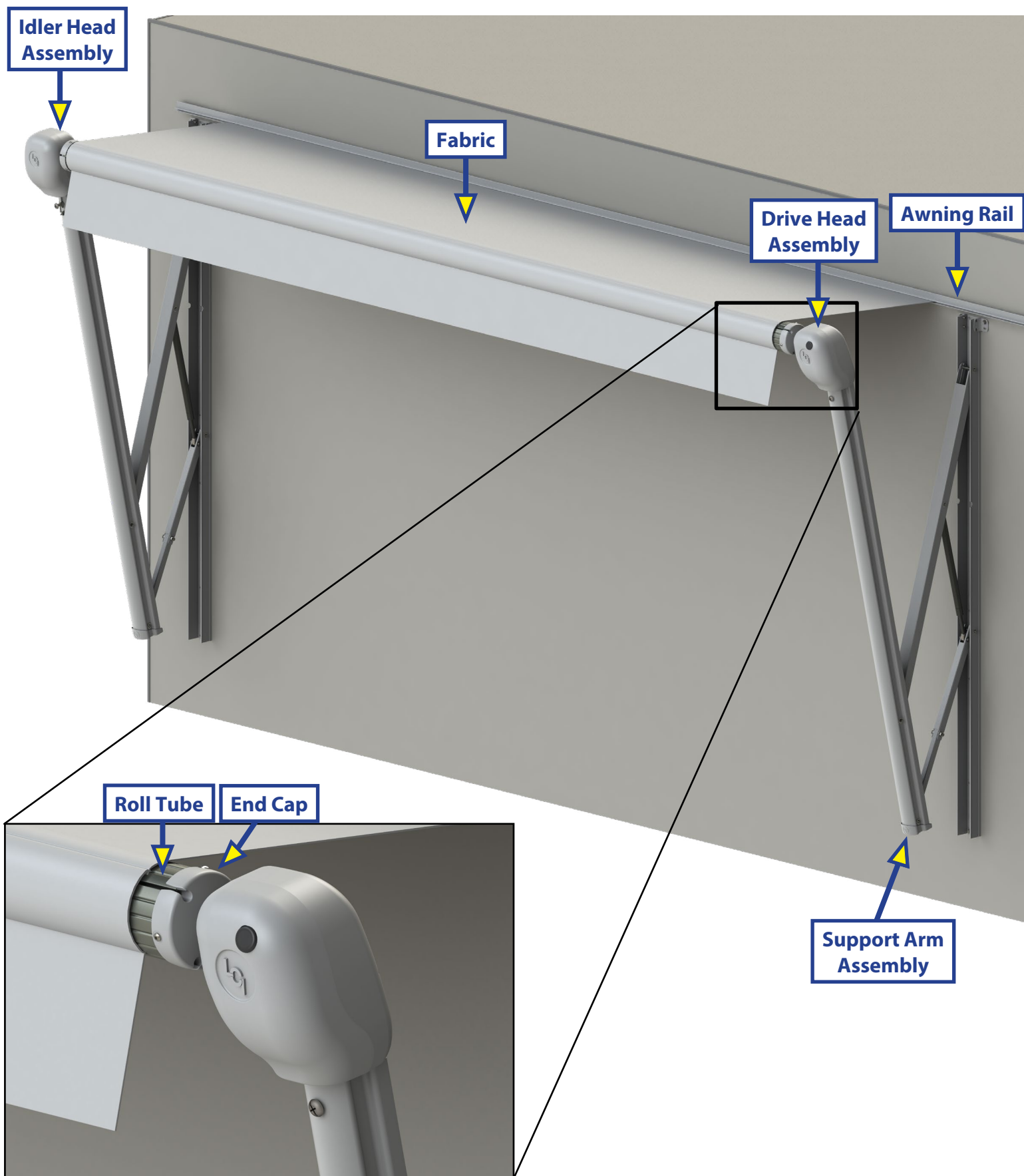
**During incidents of high wind, heavy rain or extended time away from the unit, it is advisable to retract the awning completely to prevent damage to the awning and the RV.**





# SOLERA® POWER AWNING ASSEMBLY

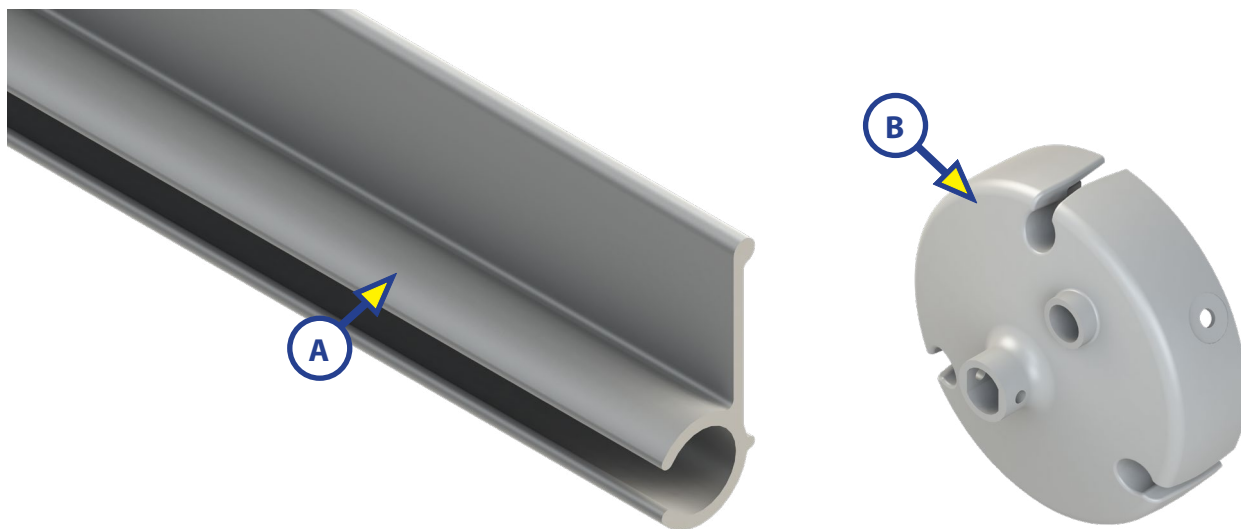
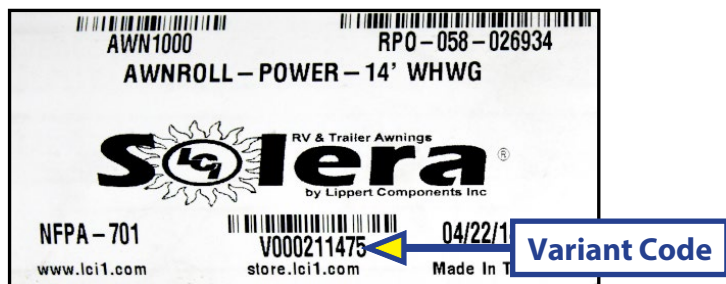
## AWNINGS



**NOTE:** Part numbers are shown for identification purposes only. Not all parts are available for individual sale. All parts with a link to the Lippert Store can be purchased.

### Variant Code Information

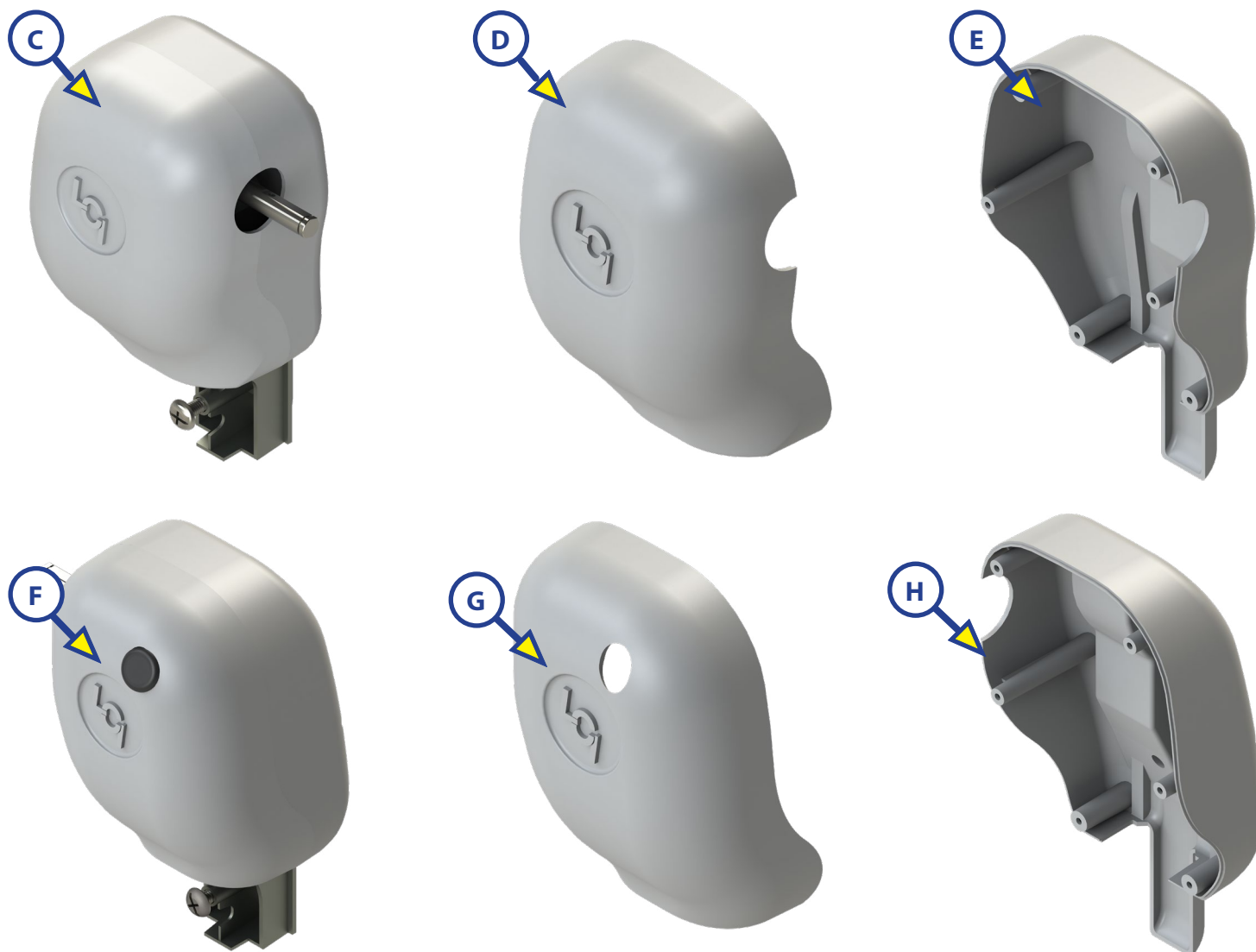
The variant code on Lippert products can assist LCI customers in obtaining additional information about the product and its components. For replacement part information, locate the variant code on the awning roll tube and call LCI customer service at 574-537-8900.



Callout	Part #	Description
A	281928	White Awning Rail (144")
	281929	Black Awning Rail (144")
B	2661301	White End Caps
	2661302	Black End Caps



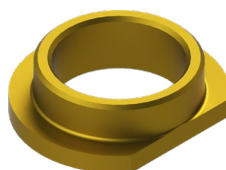
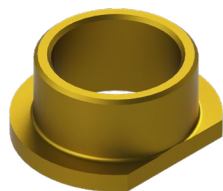
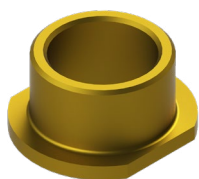
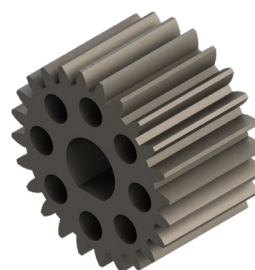
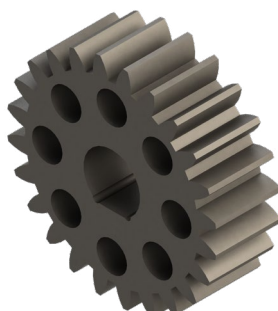
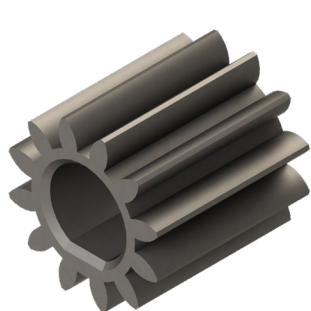
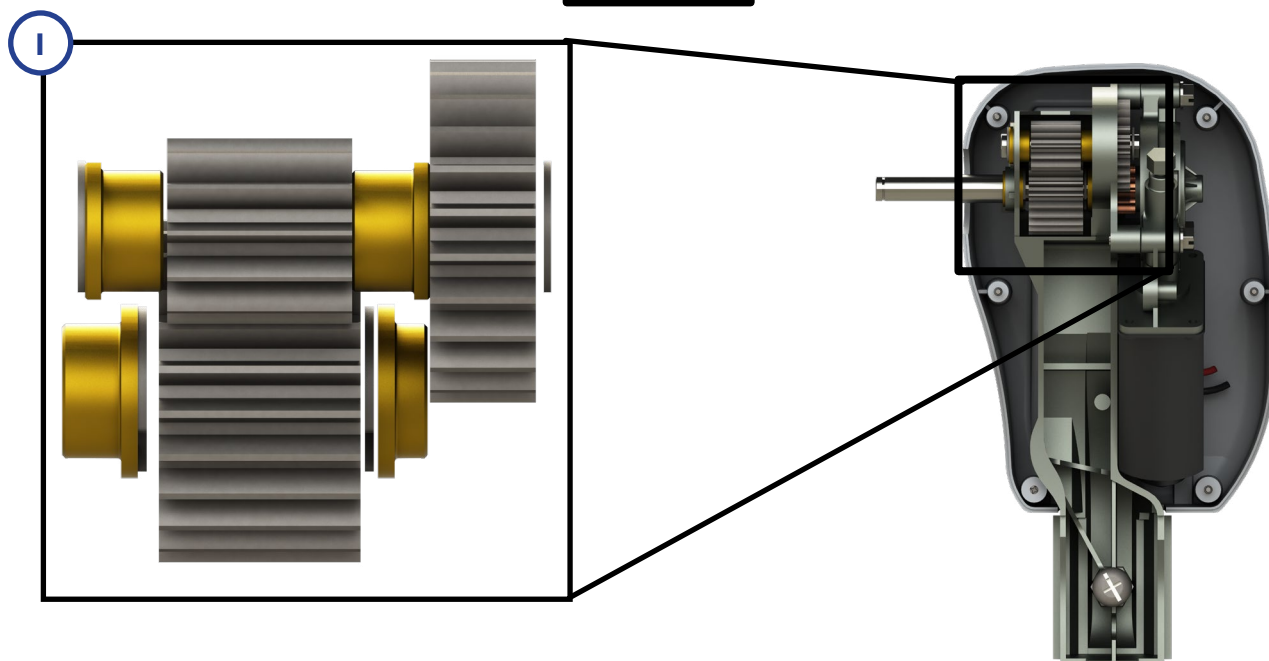
## AWNINGS



Callout	Part #	Description
C	<a href="#">266147</a>	White Idler Head Assembly
	<a href="#">273479</a>	Black Idler Head Assembly
D	<a href="#">289563</a>	White Idler Head Front Cover
	<a href="#">289566</a>	Black Idler Head Front Cover
E	<a href="#">289564</a>	White Idler Head Rear Cover
	<a href="#">289567</a>	Black Idler Head Rear Cover
F	<a href="#">266146</a>	White Drive Head Assembly
	<a href="#">273478</a>	Black Drive Head Assembly
G	<a href="#">289557</a>	White Drive Head Front Cover
	<a href="#">289560</a>	Black Drive Head Front Cover
H	<a href="#">289558</a>	White Drive Head Rear Cover
	<a href="#">289561</a>	Black Drive Head Rear Cover

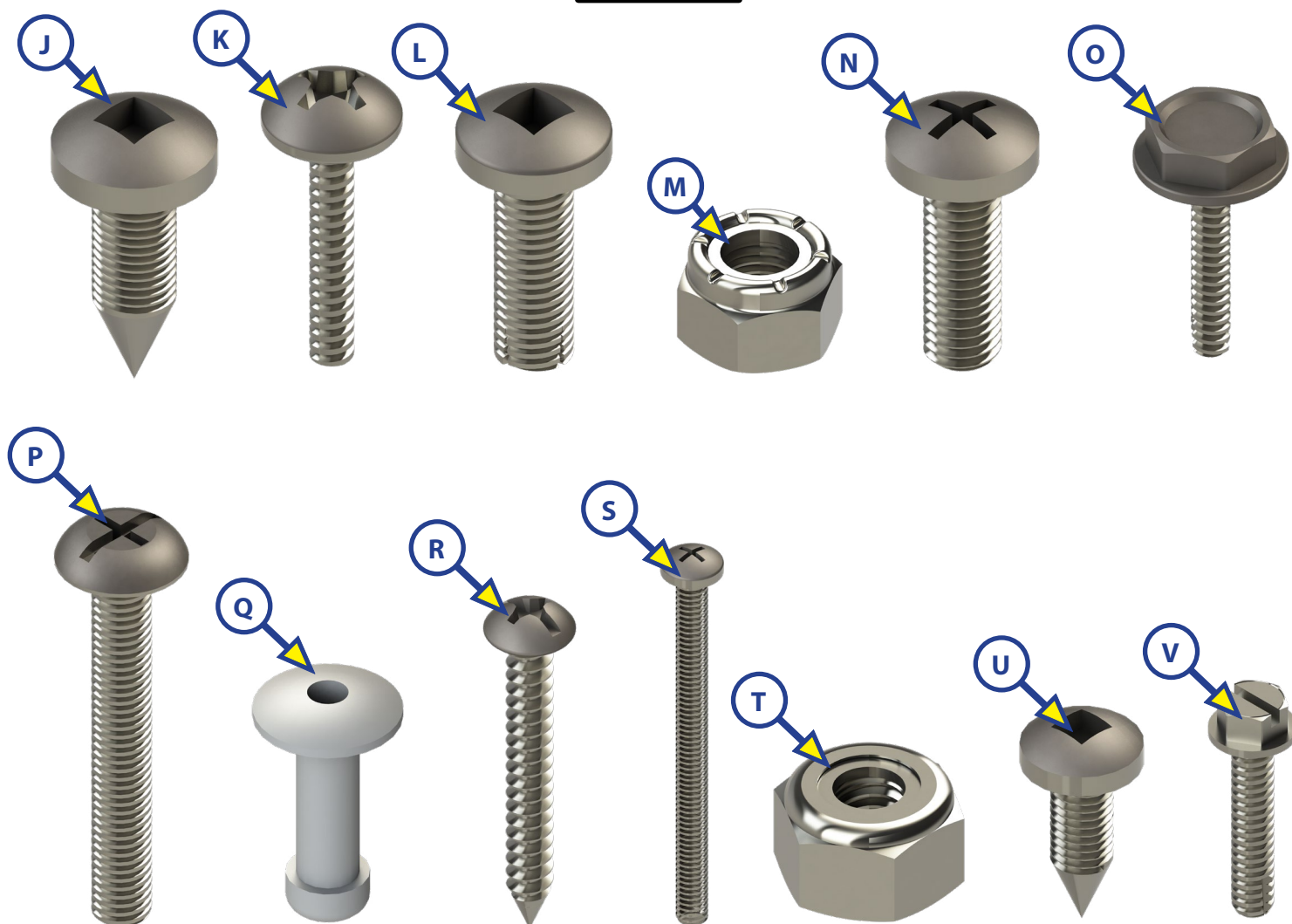


## AWNINGS



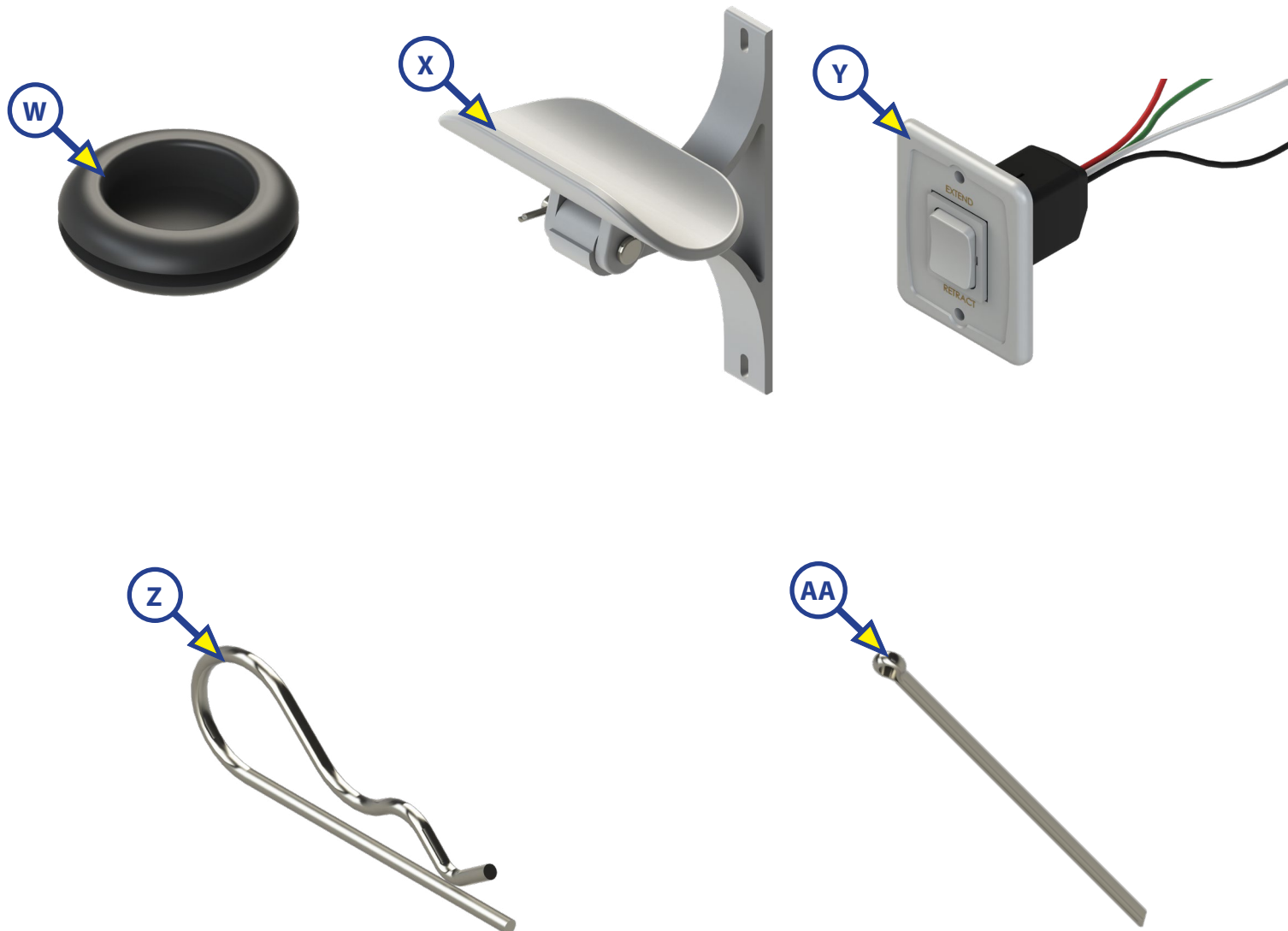
Drive Head Gear Kit		Part #	Description	Quantity
I	353964 (Only available as a kit)	266133	.873" 20 PA 16 DP, D SLOT GEAR	1
		266134	.873" 20 PA 16 DP, D SLOT GEAR	1
		266136	.500" 20 PA 16 DP, CLR ZN GEAR	1
		266142	Bushing	2
		266143	Bushing	1
		281828	Bushing	1
		266137	E-Clip 1/2"	1
		276160	E-Clip 3/8"	1

## AWNINGS

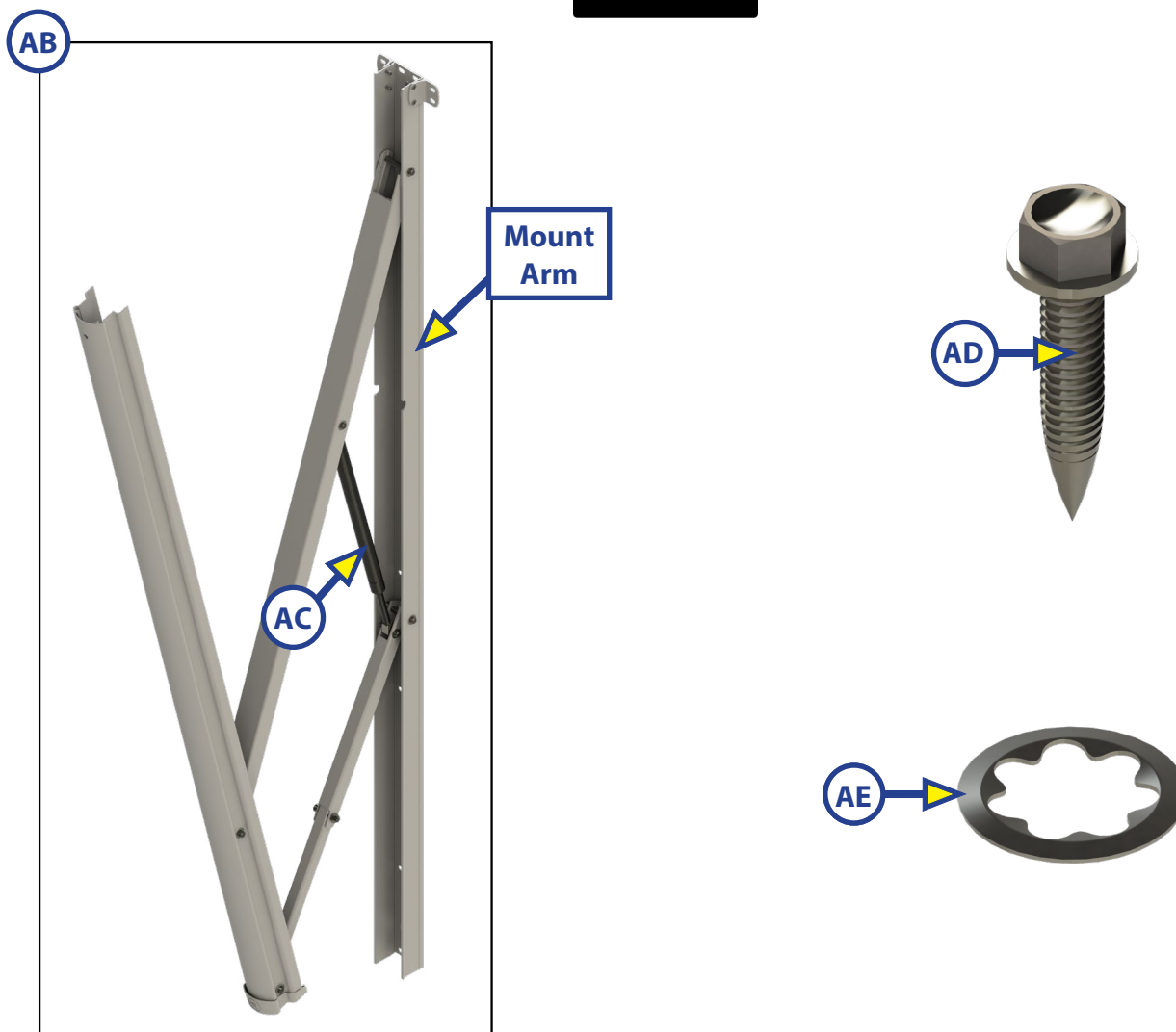


Callout	Part #	Description
J	299419	Screw, PNH, SQ DR, SLFTPG, Zn (#8 - 15 UNC x 0.500") (End Cap-to-Roll Tube)
K	266156	Screw, PNH, Zn (#6 - 15 UNF x 0.500") (Head Cover fastener – 6/Cover)
L	299630	Screw, Waxed, PNH, SQ DR, Zn (#8 - 32 UNC x 0.500") (Head-to-Roll Tube)
M	<a href="#">118043</a>	Nut, Nylon Lock, Zn ( $\frac{5}{16}$ " - 18 UNC) (Head-to-Arm)
N	266155	Screw, Machine, PNH, PHH (#8 - 32 UNC x 0.500") (Back Cover-to-Mount)
O	281079	Screw, Hex Washer, SLFDR, Zn (#6 - 20 UNC x 0.500")
P	266148	Screw, PNH, PHH, Zn ( $\frac{5}{16}$ " - 18 UNC x 2.25") (Head-to-Arm)
Q	237315	Rivet, Aluminum ( $\frac{3}{16}$ " x 1.300") (Klamp-Tite, BAPKTR-06-12)
R	429284	Screw 8 x 1 $\frac{1}{4}$ " PNH ZN CD AB ST HBK
S	384905	Screw #10 32 x $\frac{1}{2}$ " PHN Plain PH FT SST
T	384906	Nut #10 - 32 Nylon Lock Plain SST
U	320695	Screw #8 - 18 x $\frac{1}{2}$ " PNH SMS ZN SQ AB ST, BLK HD
V	266132	Screw IHWH 2N SLF ST ( $\frac{1}{4}$ - 20 x $\frac{1}{4}$ ") (Motor-to-mount)

## AWNINGS

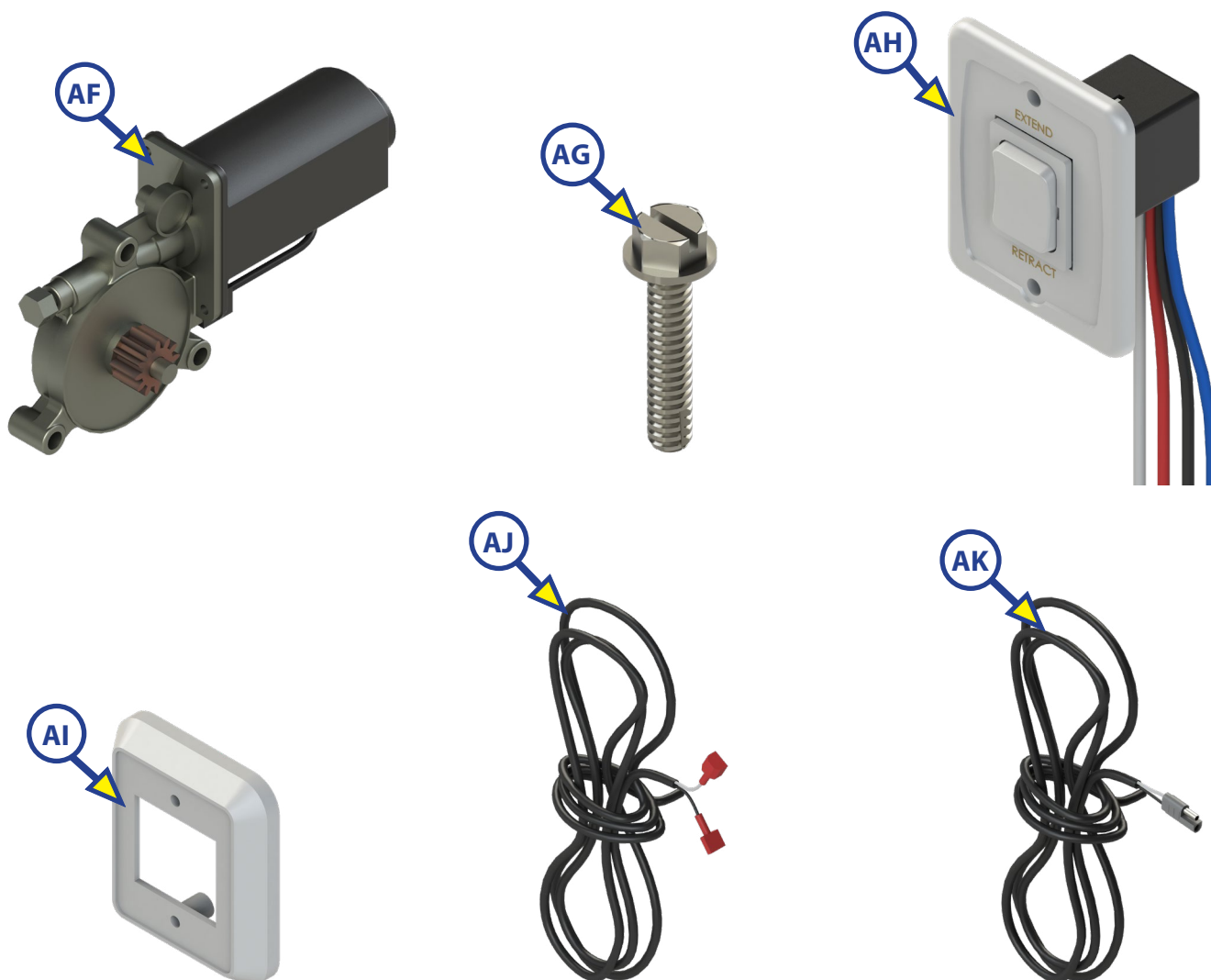


Callout	Part #	Description
W	<a href="#">275071</a>	Rubber Grommet (for Manual Override Opening)
X	<a href="#">289373</a>	White Awning Center Support Assembly
	<a href="#">289374</a>	Black Awning Center Support Assembly
<b>NOTE:</b> Only required for Solera Awnings greater than 21' in length.		
Y	293659	White Switch Kit 12GA Wire Harness
	293658	Black Switch Kit 12GA Wire Harness
Z	298760	Cotter Hairpin
AA	347119	Cotter Pin



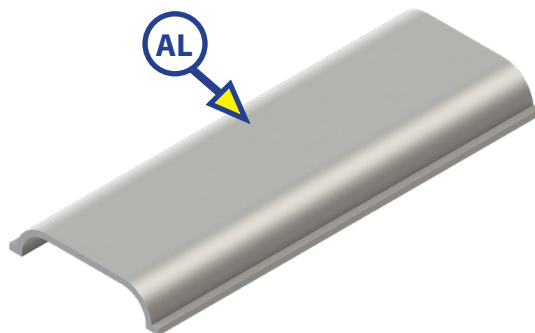
Callout	Part #	Description
AB	<a href="#">295742</a>	White Support Arm Assembly (Short, 61")
	<a href="#">295743</a>	Black Support Arm Assembly (Short, 61")
	<a href="#">260294</a>	White Support Arm Assembly (Pitched, 66 1/8")
	<a href="#">266169</a>	Black Support Arm Assembly (Pitched, 66 1/8")
	<a href="#">362132</a>	White Support Arm Assembly (Short Standard Fixed Pitch, 60 1/2")
	<a href="#">362133</a>	Black Support Arm Assembly (Short Standard Fixed Pitch, 60 1/2")
	<a href="#">281152</a>	White Support Arm Assembly (Flat, 69")
	<a href="#">281154</a>	Black Support Arm Assembly (Flat, 69")
<b>NOTE:</b> Support Arm measurement based on wall mount extrusion.		
AC	<a href="#">280343</a>	Gas Strut; 61 1/2" Short, 69" Tall and 77" XL Awning Arms
	<a href="#">260282</a>	Gas Strut; 63" Tall and 66 1/8" Tall Awning Arm
	<a href="#">346882</a>	Gas Strut; 60 1/2" Tall Awning Arm
AD	<a href="#">348108</a>	Screw (#14 - 10 x 1 1/4") (Arms-to-Coach)
AE	<a href="#">282484</a>	Star Washer (for Gas Strut)

## AWNINGS



Callout	Part #	Description
AF	<a href="#">266149</a>	Motor
AG	266132	Screw IHWH 2N SLF ST (1/4 - 20 x 1/4") (motor-to-mount)
AH	<a href="#">285499</a>	White Switch Kit (Switch, Plate, and Harness)
	<a href="#">285500</a>	Black Switch Kit (Switch, Plate, and Harness)
	<a href="#">280570</a>	Wire Harness Only
	280565	White Switch Plate Only
	280567	Black Switch Plate Only
	280564	White Switch Only
	280566	Black Switch Only
AI	<a href="#">285079</a>	White Bezel Spacer
	<a href="#">285077</a>	Black Bezel Spacer
AJ	373008	Power Feed Wires
AK	<a href="#">273007</a>	Power Feed, 2 Way

## AWNINGS



Callout	Part #	Description
AL	275070157	White Wire Cover; 9.75"; Narrow
	2750701692	Black Wire Cover; 9.75"; Narrow
	275070353	White Wire Cover; 22"; Narrow
	2750701888	Black Wire Cover; 22"; Narrow
	266138481	White Wire Cover; 30"; Narrow
	2661382017	Black Wire Cover; 30"; Narrow
	266139337	White Wire Cover; 21"; Wide
	2661391872	Black Wire Cover; 21"; Wide
	266139429	White Wire Cover; 26.75"; Wide
	2661391964	Black Wire Cover; 26.75"; Wide

[illegible]





# LIPPERT COMPONENTS®

The contents of this manual are proprietary and copyright protected by Lippert Components, Inc. ("LCI"). LCI prohibits the copying or dissemination of portions of this manual unless prior written consent from an authorized LCI representative has been provided. Any unauthorized use shall void any applicable warranty. The information contained in this manual is subject to change without notice and at the sole discretion of LCI.

Revised editions are available for free download from [www.lci1.com](http://www.lci1.com).

Please recycle all obsolete materials.

For all concerns or questions, please contact  
Lippert Components, Inc.

Ph: (574) 537-8900 | Web: [www.lci1.com](http://www.lci1.com) | Email: [customerservice@lci1.com](mailto:customerservice@lci1.com)