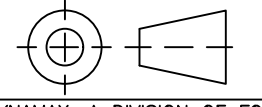
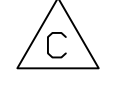


REVISIONS						
ZONE	REV	DESCRIPTION	DATE	BY	APRVD	ECN
NS	00	RELEASED TO PRODUCTION	3.31.17	JPA		17-0034

THIRD ANGLE PROJECTION





DENOTES CRITICAL ITEM

DYNAMAX, A DIVISION OF FOREST RIVER CLAIMS PROPRIETARY RIGHTS IN THE MATERIAL DISCLOSED HEREON. NEITHER THIS DRAWING NOR ANY REPRODUCTION THEREOF MAY BE USED TO MANUFACTURE ANYTHING SHOWN HEREON WITHOUT PERMISSION IN WRITING FROM DYNAMAX TO THE USER SPECIFICALLY REFERRING TO THE DRAWING.

TOLERANCE UNLESS SPECIFIED OTHERWISE

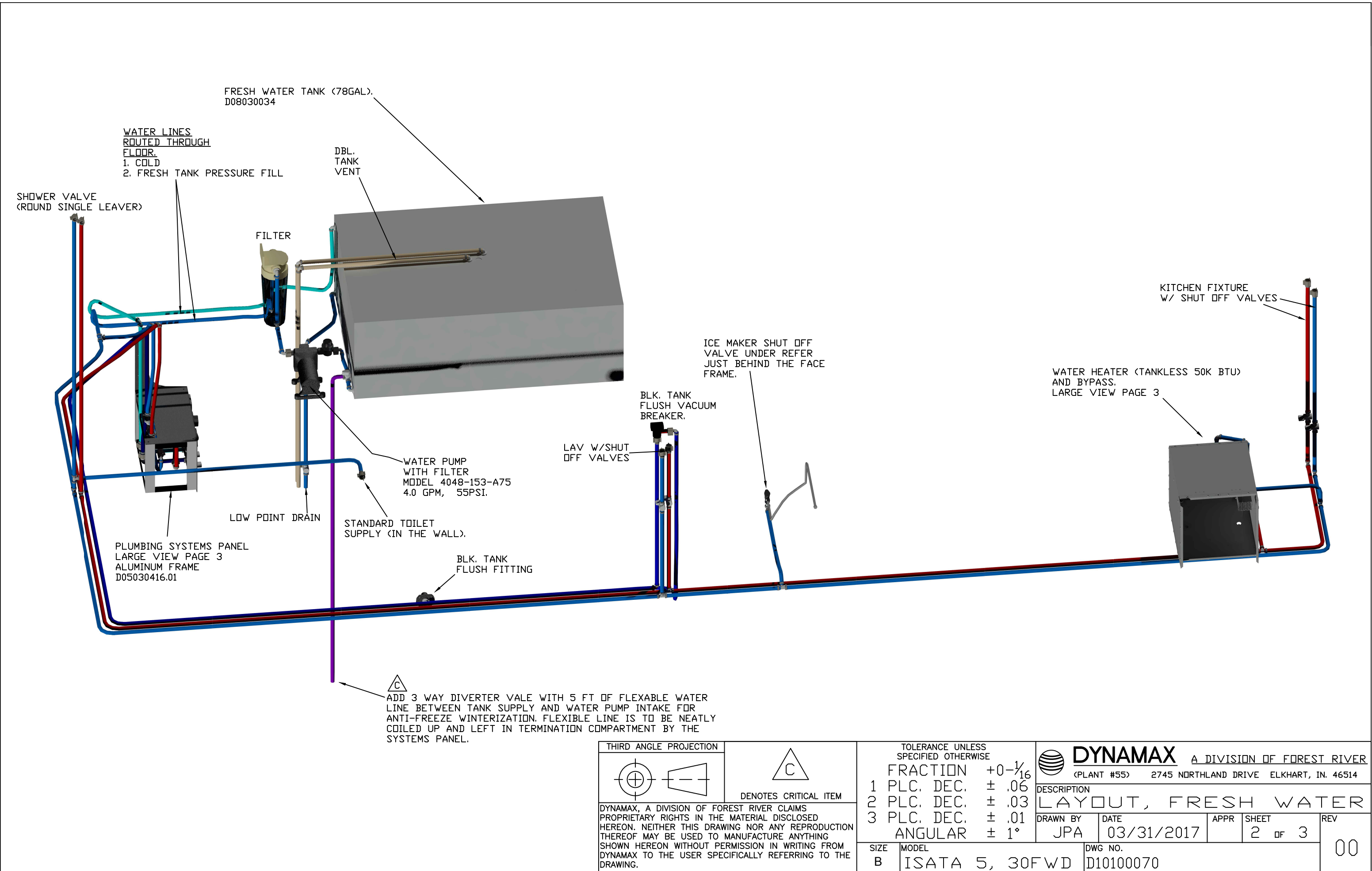
FRACTION	+0- $\frac{1}{16}$
1 PLC. DEC.	$\pm .06$
2 PLC. DEC.	$\pm .03$
3 PLC. DEC.	$\pm .01$
ANGULAR	$\pm 1^\circ$

 **DYNAMAX** A DIVISION OF FOREST RIVER
(PLANT #55) 2745 NORTHLAND DRIVE ELKHART, IN. 46514

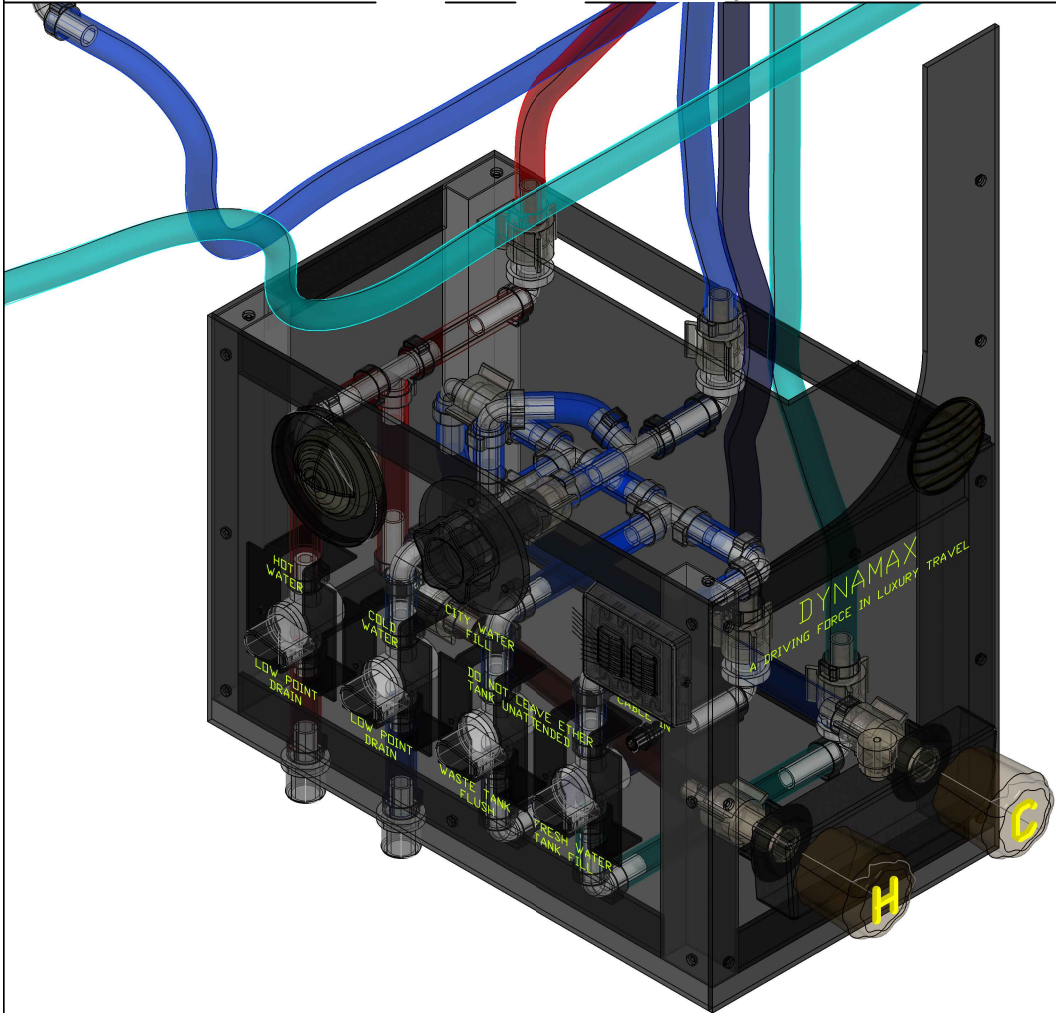
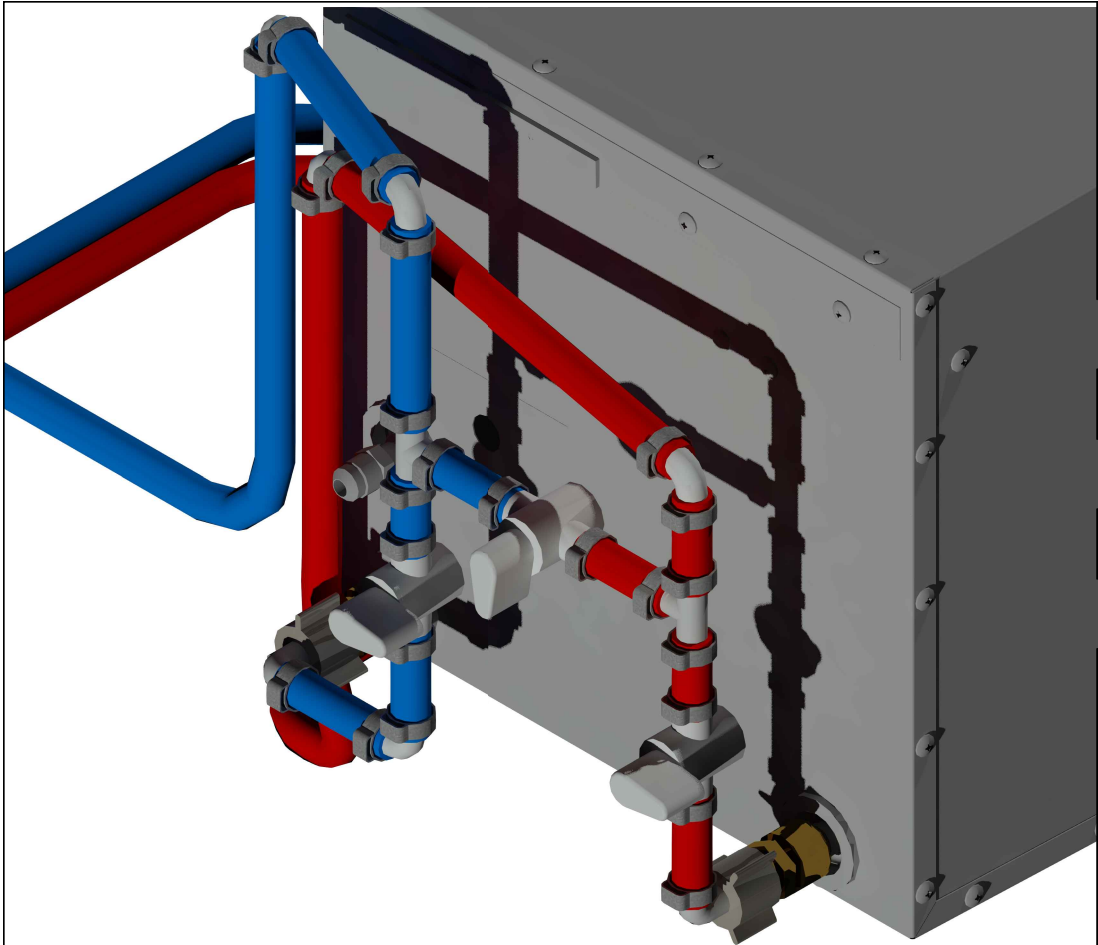
DESCRIPTION
LAYOUT, FRESH WATER

DRAWN BY JPA	DATE 03/31/2017	APPR	SHEET 1 OF 3	REV 00
-----------------	--------------------	------	-----------------	-----------

SIZE B	MODEL ISATA 5, 30FWD	DWG NO. D10100070
-----------	-------------------------	----------------------



THIRD ANGLE PROJECTION				TOLERANCE UNLESS SPECIFIED OTHERWISE				DYNAMAX A DIVISION OF FOREST RIVER					
		DENOTES CRITICAL ITEM		FRACTION +0-1/16		(PLANT #55) 2745 NORTHLAND DRIVE ELKHART, IN. 46514		DESCRIPTION					
DYNAMAX, A DIVISION OF FOREST RIVER CLAIMS PROPRIETARY RIGHTS IN THE MATERIAL DISCLOSED HEREON. NEITHER THIS DRAWING NOR ANY REPRODUCTION THEREOF MAY BE USED TO MANUFACTURE ANYTHING SHOWN HEREON WITHOUT PERMISSION IN WRITING FROM DYNAMAX TO THE USER SPECIFICALLY REFERRING TO THE DRAWING.				1 PLC. DEC. ± .06				LAYOUT, FRESH WATER					
				2 PLC. DEC. ± .03				DRAWN BY		DATE	APPR	SHEET	REV
				3 PLC. DEC. ± .01				JPA		03/31/2017		2 OF 3	
				ANGULAR ± 1°				DWG NO.					
								ISATA 5, 30FWD		D10100070			



FRESH WATER TANK
PRESSURE FILL.

BLACK
TANK
FLUSH

HOT

COLD

OFF OF CITY WATER INLET, MAKE A MANIFOLD
TO CONNECT FRESH TANK FILL, LOW POINT DRAIN,
EXTERIOR SHOWER, BLACK TANK FLUSH AND THE
SUPPLY TO THE REST OF THE RV.

HOT SHOULD CONNECT THE EXTERIOR SHOWER, LOW POINT
DRAIN, AND CONNECTION TO THE HOT WATER LINES TO
THE REST OF THE RV.

TANK FLUSH RUNS DIRECTLY FROM THE PANEL TO
THE VACUUM BREAKER UNDER THE LAV COUNTER TOP.

BOTTOM OUTLET OF THE FRESH TANK PRESSURE FILL
RUNS DIRECTLY TO THE FRESH TANK FITTING LEFT SIDE
OF THE LARGE GRAVITY FILL HOSE.

EXTERIOR SHOWER VALVE IS THE SAME AS THE REV'S
EXTERIOR SHOWER VALE WITH THE HAND HELD SPRAYER.

PANEL SHOULD BE BUILT ON THE
BENCH WITH FLEXIBLE SHOWER
CONNECTIONS. WHEN PLACED IN
THE RV INSTALL MAIN PANEL AND
MAKE THE MAIN 4 CONNECTIONS.
HOOK UP THE LINES TO THE
SHOWER VALVE AND INSTALL THE
FRONT PANEL THAN THE HAND HELD
SHOWER HEAD.

THIRD ANGLE PROJECTION						TOLERANCE UNLESS SPECIFIED OTHERWISE				DYNAMAX A DIVISION OF FOREST RIVER						
<p>DYNAMAX, A DIVISION OF FOREST RIVER CLAIMS PROPRIETARY RIGHTS IN THE MATERIAL DISCLOSED HEREON. NEITHER THIS DRAWING NOR ANY REPRODUCTION THEREOF MAY BE USED TO MANUFACTURE ANYTHING SHOWN HEREON WITHOUT PERMISSION IN WRITING FROM DYNAMAX TO THE USER SPECIFICALLY REFERRING TO THE DRAWING.</p>		<p>DENOTES CRITICAL ITEM</p>		FRACTION		+0- $\frac{1}{16}$		(PLANT #55) 2745 NORTHLAND DRIVE ELKHART, IN. 46514								
				1 PLC. DEC.		± .06		DESCRIPTION								
				2 PLC. DEC.		± .03		LAYOUT, FRESH WATER								
				3 PLC. DEC.		± .01		DRAWN BY								
				ANGULAR		± 1°		JPA		DATE	03/30/2017	APPR	SHEET	3 OF 3	REV	00
				SIZE		MODEL		DWG NO.								
				B		ISATA 5, 30FWD		D10100070								